

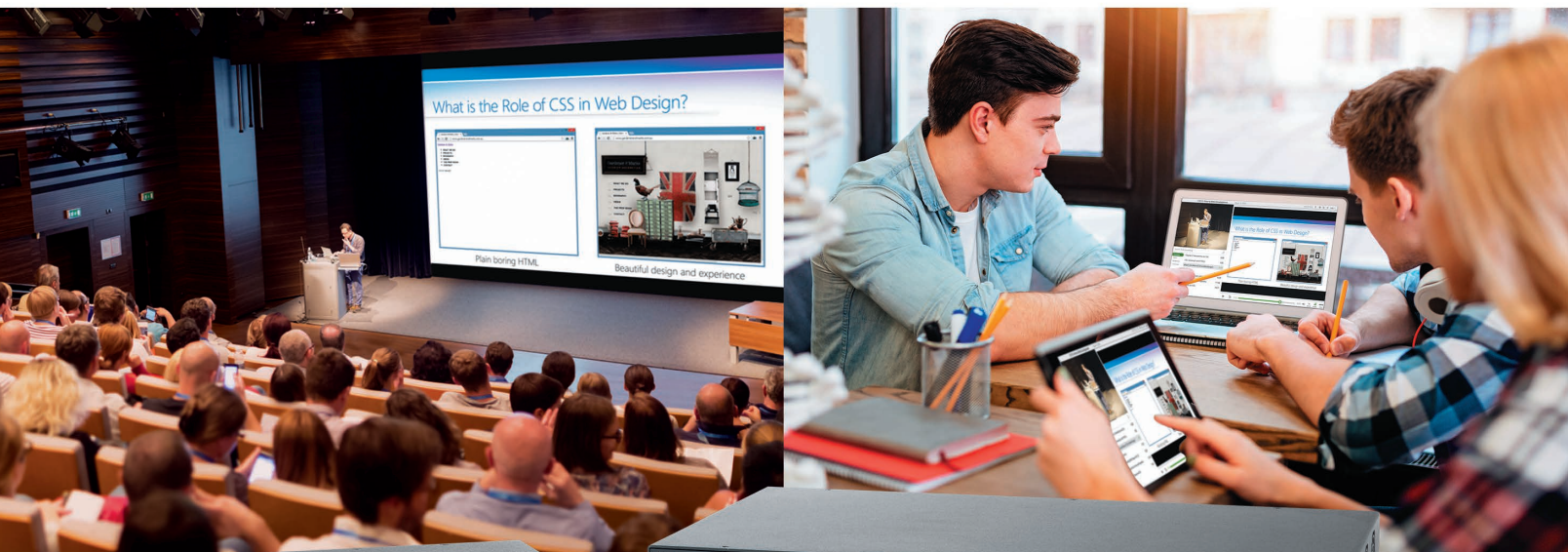


2020 NEW PRODUCTS

SECOND EDITION



Extron



SMP Series Streaming Media Processors

Enable Learning Anytime, Anywhere

As organizations look for the best way to enable remote communications, learning, and training, finding the right technology to record, stream, and publish content becomes increasingly important. Extron streaming solutions connect students and employees to live or on-demand content anytime, anywhere, on any device.

Our SMP Streaming Media Processors are robust, worry-free recording and streaming appliances that fit easily into any workflow for both ad-hoc and scheduled activities. The purpose-built scalable SMP architecture alleviates the complexity, reliability, security, and network management burdens associated with PC or software-based recording tools. This ensures that customers have the flexibility they need for their different learning environments and can utilize SMP products with any video platform they require, today and in the future.

- Lecture/Event Capture
- Live Streaming
- Online/Distance Learning
- Flipped classroom initiatives
- On-demand digital media library
- Skills capture – clinical, sports
- Active learning – medical, legal, forums
- Governance or policy meetings

Extron Streaming Solutions Integrate with Popular Enterprise Video Platforms



To learn more, visit extron.com/SMP

STREAMING AV

SMP 351

H.264 Streaming Media Processor

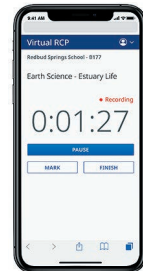
The SMP 351 is a high performance recording and streaming processor for capturing and distributing AV sources and presentations as recorded media or live streaming. Accepting HDMI, component, composite, and optional 3G-SDI signals, it applies two-window processing to the selected sources. The SMP 351 can record and stream simultaneously and can stream at two different resolutions and bit rates concurrently using a range of transport protocols and session management options. Requiring no licensing fees, the SMP 351 has a low cost of ownership, making it a cost-effective solution for delivering presentations to a larger audience.

FEATURES

- Process two high resolution AV sources from up to five available input signals
- Record and stream simultaneously
- High quality scaling with flexible two-window management
- **NEW** RTMP and RTMPS streaming protocols support popular third-party hosting services
- **NEW** LinkLicense for Enhanced Panopto Features
- **NEW** LinkLicense for Enhanced Kaltura Features
- **NEW** Free SMP mobile device control with vRCP



SMP 351 3G-SDI



New vRCP lets you control the SMP with your mobile device

NOW SHIPPING

| Model | Version Description | Part Number |
|--------------------------------|--------------------------------------|-------------|
| SMP 351 | Standard Version - 80 GB SSD | 60-1324-01 |
| SMP 351 3G-SDI | with 3G-SDI Input - 80 GB SSD | 60-1324-02 |
| SMP 351 | Standard Version - 400 GB SSD | 60-1324-11 |
| SMP 351 3G-SDI | with 3G-SDI Input - 400 GB SSD | 60-1324-12 |
| SMP 300 vRCP FlexOS app | Virtual Remote Control Panel for SMP | N/A |

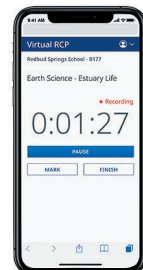
SMP 111

Single Channel H.264 Streaming Media Processor

The SMP 111 is a high performance recording and streaming processor for capturing and distributing AV sources and presentations as live streaming and recorded media. The SMP 111 accepts an HDMI signal with embedded audio and an analog audio signal. Recording with the SMP 111 provides easy capture of live HDMI signals to an internal flash drive and external USB drives. Requiring no licensing fees, the SMP 111 is a cost-effective solution for streaming and recording content.

FEATURES

- Process live, high resolution HDMI video and audio with metadata
- Record and stream simultaneously
- **NEW** RTMPS support for Facebook Live
- **NEW** Record Duration Limiter
- **NEW** Panopto publishing using Panopto FlexOS App
- **NEW** Secure Sockets Layer (SSL) certificates support
- **NEW** Free SMP mobile device control with vRCP



New vRCP lets you control the SMP with your mobile device

NOW SHIPPING

| Model | Version Description | Part Number |
|--------------------------------|--------------------------------------|-------------|
| SMP 111 | Single Channel Recorder - 32 GB | 60-1594-01 |
| SMP 111 vRCP FlexOS app | Virtual Remote Control Panel for SMP | N/A |

LinkLicense for SMP 111

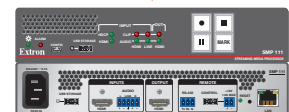
Leverage the Power of SMP Streaming Media Processors for Live Streaming with Kaltura and Panopto Video Platforms

Extron offers enhanced live streaming features to seamlessly connect the Extron SMP 111 Streaming Media Processor to Kaltura and Panopto enterprise video management systems. The Live Streaming Upgrade LinkLicense for Kaltura or Panopto Features enables users to deliver live streams for lectures and presentations to either platform for viewing, in addition to the out-of-box SMP 111 ad hoc recording and publishing capability. Users will enjoy a unified and integrated experience that ensures viewers are able to access live streams from any device, anytime, anywhere.

FEATURES

- High quality H.264 video
- Live Streaming with RTMP to Kaltura or Panopto
- Enables seamless delivery of live streams for lectures and events

Connect AV Sources



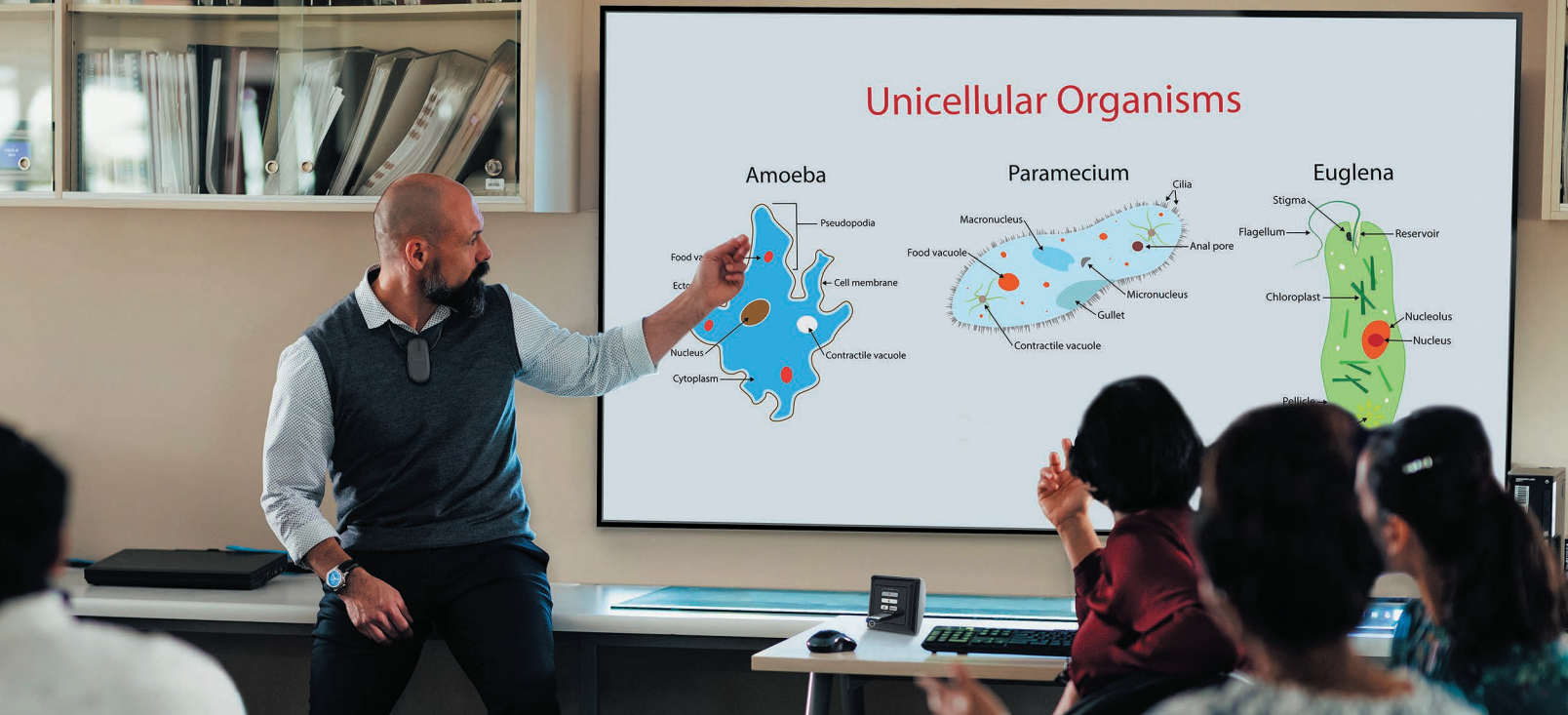
Live Stream



NOW AVAILABLE

| Model | Version Description | Part Number |
|--------------------|--|-------------|
| LinkLicense | SMP 111 Panopto Live Streaming Upgrade | 79-2578-01 |
| LinkLicense | SMP 111 Kaltura Live Streaming Upgrade | 79-2579-01 |

For updated product availability, go to www.extron.com



STUDIO STATION

One Touch Recording and Streaming

With the rise in online learning, flipped classrooms, and lecture capture, educational institutions and corporations are expecting more from their classrooms and presentation spaces. These areas must be dynamic, flexible, and easy to use. Presenters need to reach people beyond their walls, often in remote locations, with a process as easy as recording a favorite television show.

Extron created StudioStation® so that anyone, of any skill level, can quickly and easily record and stream. StudioStation is a convenient solution for recording and streaming high quality audio video presentations with a pre-configured package that takes the guesswork out of designing, installing, and programming a studio recording system.

Key Features

- Simple recording and streaming
- High quality video and audio
- Mark chapters for quick selection
- Publish to USB drive, network share, or enterprise video platform
- Flexible control with RCP 101 or Virtual RCP
- Easy to use for any skill level

Simple Control and Operation



Insert a USB drive to turn the system on.

CONNECT



Press record on the button panel or your mobile device.

RECORD



Recordings are automatically saved to your USB drive.

SAVE

To learn more, visit extron.com/studiostation

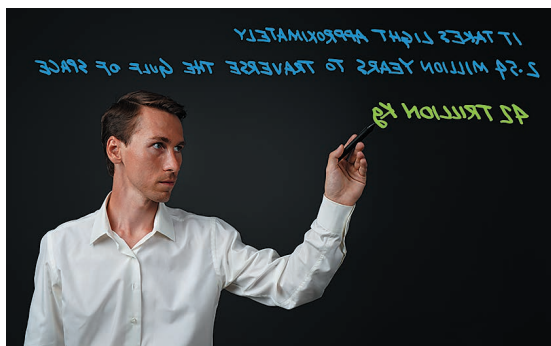
StudioStation Standard Components

- SMP 111 Streaming Media Processor
- **NEW** IPCP Pro PCS1 Power Controller
- **NEW** VoiceLift Pro EB Pendant Microphone
- RCP 101 Remote Control Panel
- SMB 211 Single Gang Surface Mount Box

StudioStation can be customized to fit your needs.
Customize using our online StudioStation Builder.



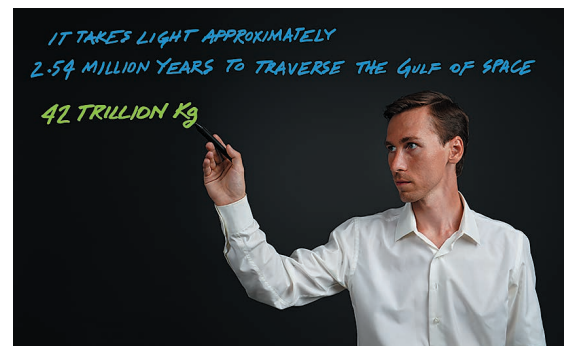
StudioStation Enhancements



Recordings from lightboard applications will appear backwards as if seen in a mirror



Horizontal
Mirroring



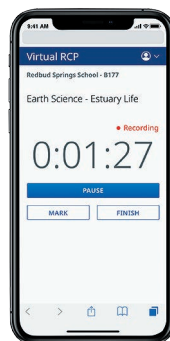
Horizontal Video Mirroring automatically flips the video to create legible recordings

Horizontal Video Mirroring LinkLicense

Flipped classroom environments enhance student learning and achievement by delivering instructional content to students before they set foot in a classroom, typically online. Lightboards are a visually-stimulating way to present content in flipped classroom environments. A lightboard is a large surface of transparent glass that is placed between the camera and the presenter. The presenter is filmed through the glass, writing onto the transparent surface with a neon marker, where the text glows and appears as if floating in air. With the addition of this LinkLicense users are able to natively flip video horizontally on the SMP.

Virtual Remote Control Panel for SMP Series

Once you have installed the free vRCP virtual remote control panel FlexOS App on an SMP series streaming media processor, presenters can use the browser on any personal device to control system functions without needing to use a physical control interface. A simple and intuitive on-screen interface provides users with an easy way to start, stop, or pause recordings, and mark chapters from anywhere in the room.



Enhanced Audio and Control with VoiceLift Pro Microphone

StudioStation now includes a VoiceLift Pro EB Pendant Microphone, providing an easy to use, high quality solution for capturing the presenter's voice when recording or streaming. Since the function buttons on the pendant microphone can be used to start, pause, and stop recordings, presenters now have another option for effortless system control wherever they are.



| Model | Version Description | Part Number |
|---------------|--|-------------|
| StudioStation | Black | 42-296-01 |
| LinkLicense | SMP 111 Horizontal Video Mirroring Upgrade | 79-2553-02 |

For updated product availability, go to www.extron.com

Europe
+31.33.453.4040 / +800.3987.6673
+31.33.453.4050 FAX

Middle East
+971.4.299.1800
+971.4.299.1880 FAX

Asia
+65.6383.4400 / +800.7339.8766
+65.6383.4664 FAX

China
+86.21.3760.1568 / +4000.398766
+86.21.3760.1566 FAX

Japan
+81.3.3511.7655
+81.3.3511.7656 FAX

Extron

FOX3 SYSTEMS



Introducing FOX3 Systems

4K/60 4:4:4 Video, Audio, USB, and Control over Fiber

Introducing FOX3 Systems, the industry-leading high-performance family of fiber optic extenders and matrix switchers for end-to-end distribution of 4K video, audio, control, USB, and 3D sync. FOX3 extenders feature built-in USB for KVM applications while Extron-exclusive Vector™ 4K scaling technology ensures best-in-class image quality. Delivering exceptional reliability and advanced capabilities such as audio breakaway, audio embedding/de-embedding, DMP expansion, and Dante® integration, the FOX3 Series meets the demands of any mission-critical environment.

- Supports mathematically lossless 4K/60 4:4:4 video over one fiber or uncompressed 4K/60 4:4:4 video over two fibers
- Scaling receiver models available with Extron-exclusive Vector 4K scaling technology for design flexibility and easy integration
- HDCP 2.3 compliant
- Supported HDMI 2.0 specifications include data rates up to 18 Gbps, Deep Color up to 12-bit, and 3D
- Integrates DMP expansion, local analog audio insertion and extraction, and Dante with AES67 support
- Advanced 24/7 system monitoring

18 Gbps
4K/60 4:4:4

4K UHD

VECTOR 4K
SCALING

EVERLAST
POWER SUPPLIES

Dante®

**DANTE DOMAIN
MANAGER READY**

AES67

JITC
CERTIFIED



Setting the New Standard in 4K Fiber Optic Distribution

Uncompromised Image Quality

Supporting data rates up to 18 Gbps, the FOX3 series extenders are designed to send uncompressed video images up to 4096x2160 at 60 Hz with 4:4:4 chroma sampling over two fibers or mathematically lossless video images over one fiber, making FOX3 ideal for mission-critical applications or any environment that requires pristine transmission of very high-resolution imagery.

USB Signal Switching and Extension

Select FOX3 extenders offer USB extension to streamline system integration in KVM – keyboard, video, and mouse applications. USB device class filtering and HID-only ports allow for tailor-made solutions in high security deployments. USB Host and Peripheral Emulation offer increased system reliability in KVM applications.

Designed for Full Audio System Integration

FOX3 Matrix Switchers provide leading-edge audio functionality, including audio switching and breakaway, stereo audio embedding and de-embedding, a DMP expansion port, two Dante® ports, and local analog audio inputs and outputs. The matrix switcher can embed any selected analog input audio signals onto any output, and any two-channel PCM audio signal can be extracted and independently routed.

Centralized Enterprise Level Control

FOX3 Matrix Switchers enable the insertion and extraction of RS-232 control data from the Ethernet port to the transmitters and receivers over the fiber optic cable. This allows complete centralized control of endpoints and attached devices without needing additional cabling.

To learn more, visit extron.com/FOX3



FOX3
SYSTEMS

FOX3 Fiber Optic Transmitters & Receivers

Extron FOX3 Series fiber optic extenders provide long haul transmission of HDCP-compliant HDMI video, USB, audio, control, and 3D sync signals over fiber optic cable. Engineered for exceptional high-resolution image performance, they use Extron all-digital technology to deliver perfect pixel-for-pixel, uncompressed transmission of images up to 4K/60 @ 4:4:4 over two fibers or mathematically lossless 4K/60 @ 4:4:4 video over one fiber. Designed specifically for AV and KVM systems, FOX3 extenders also include many integrator-friendly features such as Key Minder®, EDID Minder®, audio embedding and de-embedding, Ethernet monitoring and control, audio gain and attenuation, and real-time system monitoring.

Key Features

- Extend HDMI video, USB, stereo audio, RS-232 control, IR control, and 3D sync signals over fiber optic cabling
- Supports mathematically lossless 4K video up to 4096x2160 at 60 Hz with 4:4:4 chroma sampling over one fiber
- Supports uncompressed 4K video up to 4096x2160 at 60 Hz with 4:4:4 chroma sampling over two fibers
- HDCP 2.3 compliant
- Key Minder continuously verifies HDCP compliance for quick, reliable switching
- Transmitters feature a buffered HDMI input loop-through for a local display
- Audio embedding converts analog audio to digital HDMI audio at the transmitter
- HDMI audio de-embedding with analog stereo outputs at the receiver
- Ethernet insertion of control signals at the matrix and control signal extension to remote endpoints provides a complete enterprise-level control infrastructure

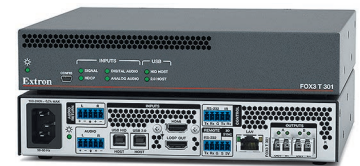
FIBER OPTICS

FOX3 T 301

Fiber Optic Transmitter for HDMI, USB, Audio, Control, and 3D Sync

UNIQUE FEATURES

- Transmits HDMI video, USB, stereo audio, RS-232 control, IR control, and 3D sync signals over fiber optic cabling
- Supported HDMI 2.0 specification features include data rates up to 18 Gbps, Deep Color up to 12-bit, and 3D
- Supports USB 2.0 to 1.0 devices and USB 3.0 devices that can operate at USB 2.0 data rates of up to 480 Mbps
- Device class filtering on USB HID port restricts the range of device types to HID



FOX3 T 301 MM

NOW SHIPPING

| Model | Version Description | Part Number |
|---------------|---|-------------|
| FOX3 T 301 MM | Lossless 4K/60 Transmitter - Multimode | 60-1522-11 |
| FOX3 T 301 SM | Lossless 4K/60 Transmitter - Singlemode | 60-1522-12 |
| FOX3 T 301 MM | Uncompressed 4K/60 Transmitter - Multimode | 60-1522-13 |
| FOX3 T 301 SM | Uncompressed 4K/60 Transmitter - Singlemode | 60-1522-14 |

FOX3 R 301

Fiber Optic Receiver for HDMI, USB, Audio, Control, and 3D Sync

UNIQUE FEATURES

- Receives HDMI video, USB, stereo audio, RS-232 control, IR control, and 3D sync signals over fiber optic cabling
- Supported HDMI 2.0 specification features include data rates up to 18 Gbps, Deep Color up to 12-bit, and 3D
- Supports USB 2.0 to 1.0 devices and USB 3.0 devices that can operate at USB 2.0 data rates of up to 480 Mbps
- Device class filtering on USB HID port restricts the range of device types to HID



FOX3 R 301 MM

NOW SHIPPING

| Model | Version Description | Part Number |
|---------------|--|-------------|
| FOX3 R 301 MM | Lossless 4K/60 Receiver - Multimode | 60-1522-21 |
| FOX3 R 301 SM | Lossless 4K/60 Receiver - Singlemode | 60-1522-22 |
| FOX3 R 301 MM | Uncompressed 4K/60 Receiver - Multimode | 60-1522-23 |
| FOX3 R 301 SM | Uncompressed 4K/60 Receiver - Singlemode | 60-1522-24 |

FOX3 SR 301

Fiber Optic Scaling Receiver for HDMI, USB, Audio, Control, and 3D Sync

UNIQUE FEATURES

- Receives fiber optic signals from FOX3 Series transmitters and provides scaled HDMI video, USB, stereo audio, RS-232 control, IR control, and 3D sync signals
- High-performance scaler provides selectable output resolutions up to 4096x2160 at 60 Hz with 4:4:4 chroma sampling
- Supported HDMI 2.0 specification features include data rates up to 18 Gbps, Deep Color up to 12-bit, and 3D
- Supports USB 2.0 to 1.0 devices and USB 3.0 devices that can operate at USB 2.0 data rates of up to 480 Mbps



FOX3 SR 301 MM

| Model | Version Description | Part Number |
|----------------|--|-------------|
| FOX3 SR 301 MM | Lossless 4K/60 Scaling Receiver - Multimode | 60-1749-21 |
| FOX3 SR 301 SM | Lossless 4K/60 Scaling Receiver - Singlemode | 60-1749-22 |
| FOX3 SR 301 MM | Uncompressed 4K/60 Scaling Receiver - Multimode | 60-1749-23 |
| FOX3 SR 301 SM | Uncompressed 4K/60 Scaling Receiver - Singlemode | 60-1749-24 |

For updated product availability, go to www.extron.com

Europe
+31.33.453.4040 / +800.3987.6673
+31.33.453.4050 FAX

Middle East
+971.4.299.1800
+971.4.299.1880 FAX

Asia
+65.6383.4400 / +800.7339.8766
+65.6383.4664 FAX

China
+86.21.3760.1568 / +4000.398766
+86.21.3760.1566 FAX

Japan
+81.3.3511.7655
+81.3.3511.7656 FAX

FIBER OPTICS

FOX3 T 311

Fiber Optic Transmitter for HDMI, USB HID, Audio, Control, and 3D Sync

UNIQUE FEATURES

- Transmits HDMI video, USB HID, stereo audio, RS-232 control, IR control, and 3D sync signals over fiber optic cabling
- Supported HDMI 2.0 specification features include data rates up to 18 Gbps, Deep Color up to 12-bit, and 3D
- Device class filtering on USB HID port restricts the range of device types to HID



FOX3 T 311 MM

NOW SHIPPING

| Model | Version Description | Part Number |
|---------------|---|-------------|
| FOX3 T 311 MM | Lossless 4K/60 Transmitter - Multimode | 60-1523-11 |
| FOX3 T 311 SM | Lossless 4K/60 Transmitter - Singlemode | 60-1523-12 |
| FOX3 T 311 MM | Uncompressed 4K/60 Transmitter - Multimode | 60-1523-13 |
| FOX3 T 311 SM | Uncompressed 4K/60 Transmitter - Singlemode | 60-1523-14 |

FOX3 R 311

Fiber Optic Receiver for HDMI, USB HID, Audio, Control, and 3D Sync

UNIQUE FEATURES

- Receives HDMI video, USB HID, stereo audio, RS-232 control, IR control, and 3D sync signals over fiber optic cabling
- Supported HDMI 2.0 specification features include data rates up to 18 Gbps, Deep Color up to 12-bit, and 3D
- Device class filtering on USB HID port restricts the range of device types to HID



FOX3 R 311 MM

NOW SHIPPING

| Model | Version Description | Part Number |
|---------------|--|-------------|
| FOX3 R 311 MM | Lossless 4K/60 Receiver - Multimode | 60-1523-21 |
| FOX3 R 311 SM | Lossless 4K/60 Receiver - Singlemode | 60-1523-22 |
| FOX3 R 311 MM | Uncompressed 4K/60 Receiver - Multimode | 60-1523-23 |
| FOX3 R 311 SM | Uncompressed 4K/60 Receiver - Singlemode | 60-1523-24 |

FOX3 SR 311

Fiber Optic Scaling Receiver for HDMI, USB HID, Audio, Control, and 3D Sync

UNIQUE FEATURES

- Receives fiber optic signals from FOX3 Series transmitters and provides scaled HDMI video, USB HID, stereo audio, RS-232 control, IR control, and 3D sync signals
- High-performance scaler provides selectable output resolutions up to 4096x2160 at 60 Hz with 4:4:4 chroma sampling
- Supported HDMI 2.0 specification features include data rates up to 18 Gbps, Deep Color up to 12-bit, and 3D
- Device class filtering on USB HID port restricts the range of device types to HID



FOX3 SR 311 MM

| Model | Version Description | Part Number |
|----------------|--|-------------|
| FOX3 SR 311 MM | Lossless 4K/60 Scaling Receiver - Multimode | 60-1732-21 |
| FOX3 SR 311 SM | Lossless 4K/60 Scaling Receiver - Singlemode | 60-1732-22 |
| FOX3 SR 311 MM | Uncompressed 4K/60 Scaling Receiver - Multimode | 60-1732-23 |
| FOX3 SR 311 SM | Uncompressed 4K/60 Scaling Receiver - Singlemode | 60-1732-24 |

FIBER OPTICS

FOX3 T 201

Fiber Optic Transmitter for HDMI, Audio, and Control

UNIQUE FEATURES

- Transmits HDMI video, stereo audio, RS-232 control, and IR control signals over fiber optic cabling
- Supported HDMI 2.0 specification features include data rates up to 18 Gbps and Deep Color up to 12-bit
- 1" (2.5 cm) high, half rack width mountable metal enclosure



FOX3 T 201 MM

| Model | Version Description | Part Number | MSRP |
|---------------|---|-------------|---------|
| FOX3 T 201 MM | Lossless 4K/60 Transmitter - Multimode | 60-1600-11 | \$3,790 |
| FOX3 T 201 SM | Lossless 4K/60 Transmitter - Singlemode | 60-1600-12 | \$4,180 |
| FOX3 T 201 MM | Uncompressed 4K/60 Transmitter - Multimode | 60-1600-13 | \$5,590 |
| FOX3 T 201 SM | Uncompressed 4K/60 Transmitter - Singlemode | 60-1600-14 | \$6,370 |

FOX3 SR 201

Fiber Optic Scaling Receiver for HDMI, Audio, and Control

UNIQUE FEATURES

- Receives fiber optic signals from FOX3 Series transmitters and provides scaled HDMI video, stereo audio, RS-232 control, and IR control signals
- High-performance scaler provides selectable output resolutions up to 4096x2160 at 60 Hz with 4:4:4 chroma sampling
- Supported HDMI 2.0 specification features include data rates up to 18 Gbps and Deep Color up to 12-bit
- Key Minder continuously verifies HDCP compliance for quick, reliable switching
- HDCP Visual Confirmation
- 1" (2.5 cm) high, half rack width mountable metal enclosure



FOX3 SR 201 MM

| Model | Version Description | Part Number | MSRP |
|----------------|--|-------------|---------|
| FOX3 SR 201 MM | Lossless 4K/60 Scaling Receiver - Multimode | 60-1600-21 | \$3,790 |
| FOX3 SR 201 SM | Lossless 4K/60 Scaling Receiver - Singlemode | 60-1600-22 | \$4,180 |
| FOX3 SR 201 MM | Uncompressed 4K/60 Scaling Receiver - Multimode | 60-1600-23 | \$5,590 |
| FOX3 SR 201 SM | Uncompressed 4K/60 Scaling Receiver - Singlemode | 60-1600-24 | \$6,370 |

FOX3 Transmitters

| | HDMI, Audio & Control | USB | USB HID | 3D Sync | HDMI Input Loop-Through | Audio Embedding | Vector 4K Scaling |
|------------|-----------------------|-----|---------|---------|-------------------------|-----------------|-------------------|
| FOX3 T 201 | • | | | | • | • | |
| FOX3 T 301 | • | • | • | • | • | • | |
| FOX3 T 311 | • | | • | • | • | • | |

FOX3 Receivers

| | | | | | | | |
|-------------|---|---|---|---|--|--|---|
| FOX3 SR 201 | • | | | | | | • |
| FOX3 R 301 | • | • | • | • | | | |
| FOX3 SR 301 | • | • | • | • | | | • |
| FOX3 R 311 | • | | • | • | | | |
| FOX3 SR 311 | • | | • | • | | | • |

For updated product availability, go to www.extron.com



FOX3
SYSTEMS

FOX3 Fiber Optic Matrix Switchers

Extron FOX3 Matrix Switchers provide high-performance switching of 4K/60 video, audio, USB, control, and 3D sync over fiber optic cable. Expandable from 8x8 up to 320x320, these modular matrix switchers also feature RS-232 insertion from the Ethernet port, extending bidirectional control to any FOX3 endpoint. The Ethernet port supports SSH protocol, ensuring communication between the control system and the matrix is encrypted. Dante, DMP Expansion, and analog audio I/O ports enable audio embedding and de-embedding. Equipped with many additional integrator-friendly features, such as redundant hot-swappable power supplies and system monitoring, FOX3 Matrix Switchers deliver highly reliable, enterprise-wide switching of fiber optic AV, USB, and control for mission-critical environments.

Key Features

- I/O sizes from 8x8 to 320x320
- Switches 4K/60 video, audio, USB, control, and 3D sync over fiber optic cable
- Compatible with all Extron FOX3 Series transmitters and receivers for an enterprise-wide fiber optic distribution system
- Supports mathematically lossless 4K video up to 4096x2160 at 60 Hz with 4:4:4 chroma sampling over one fiber
- Supports uncompressed 4K video up to 4096x2160 at 60 Hz with 4:4:4 chroma sampling over two fibers
- Analog audio insertion and extraction
- Digital audio expansion port provides a connection to an Extron ProDSP processor for audio system scalability
- Dante® audio network interface, DMP expansion port, and analog audio inputs and outputs
- Secure partitioning segregates sources and destinations in a secure environment
- Priority switching prevents unauthorized access to sensitive data in a secure environment
- Dual redundant and hot-swappable power supplies
- JITC Certified
- Ethernet insertion of control signals at the matrix and control signal extension to remote endpoints provides a complete enterprise-level control infrastructure

FIBER OPTICS

FOX3 Matrix 24x

Modular Fiber Optic Matrix Switcher from 8x8 to 24x24

UNIQUE FEATURES

- I/O sizes from 8x8 to 24x24
- Switches 4K/60 video, audio, USB, control, and 3D sync over fiber optic cable
- Compatible with all Extron FOX3 Series transmitters and receivers
- Dante® audio network interface, DMP expansion port, and analog audio inputs and outputs
- RS-232 insertion from the Ethernet control port
- Multimode and Singlemode I/O boards available



FOX3 Matrix 24x no FPC 24io SM

| Model | Version Description | Part Number |
|--------------------------------|--|-------------|
| FOX3 Matrix 24x no FPC 8io MM | Configured Matrix - 8x8 Multimode | 60-1716-04 |
| FOX3 Matrix 24x no FPC 8io SM | Configured Matrix - 8x8 Singlemode | 60-1716-14 |
| FOX3 Matrix 24x no FPC 16io MM | Configured Matrix - 16x16 Multimode | 60-1716-05 |
| FOX3 Matrix 24x no FPC 16io SM | Configured Matrix - 16x16 Singlemode | 60-1716-15 |
| FOX3 Matrix 24x no FPC 24io MM | Configured Matrix - 24x24 Multimode | 60-1716-06 |
| FOX3 Matrix 24x no FPC 24io SM | Configured Matrix - 24x24 Singlemode | 60-1716-16 |

FOX3 Matrix 40x

Modular Fiber Optic Matrix Switcher from 8x8 to 40x40

UNIQUE FEATURES

- I/O sizes from 8x8 to 40x40
- Switches 4K/60 video, audio, USB, control, and 3D sync over fiber optic cable
- Compatible with all Extron FOX3 Series transmitters and receivers
- Dante® audio network interface, DMP expansion port, and analog audio inputs and outputs
- RS-232 insertion from the Ethernet control port
- Multimode and Singlemode I/O boards available



FOX3 Matrix 40x no FPC

| Model | Version Description | Part Number |
|------------------------|------------------------------------|-------------|
| FOX3 Matrix 40x no FPC | FOX3 Matrix 40x Frame no FPC | 60-1576-02 |
| FOX3 I/O 88 MM | 8x8 I/O Board - Multimode | 70-1107-01 |
| FOX3 I/O 88 SM | 8x8 I/O Board - Singlemode | 70-1107-02 |

NOW SHIPPING

FOX3 Matrix 80x

Modular Fiber Optic Matrix Switcher from 8x8 to 80x80

UNIQUE FEATURES

- I/O sizes from 8x8 to 80x80
- Switches 4K/60 video, audio, USB, control, and 3D sync over fiber optic cable
- Compatible with all Extron FOX3 Series transmitters and receivers
- Dante® audio network interface, DMP expansion port, and analog audio inputs and outputs
- RS-232 insertion from the Ethernet control port
- Multimode and Singlemode I/O boards available



FOX3 Matrix 80x no FPC

| Model | Version Description | Part Number |
|------------------------|------------------------------------|-------------|
| FOX3 Matrix 80x no FPC | FOX3 Matrix 80x Frame no FPC | 60-1553-02 |
| FOX3 I/O 88 MM | 8x8 I/O Board - Multimode | 70-1107-01 |
| FOX3 I/O 88 SM | 8x8 I/O Board - Singlemode | 70-1107-02 |

NOW SHIPPING

For updated product availability, go to www.extron.com

Europe
+31.33.453.4040 / +800.3987.6673
+31.33.453.4050 FAX

Middle East
+971.4.299.1800
+971.4.299.1880 FAX

Asia
+65.6383.4400 / +800.7339.8766
+65.6383.4664 FAX

China
+86.21.3760.1568 / +4000.398766
+86.21.3760.1566 FAX

Japan
+81.3.3511.7655
+81.3.3511.7656 FAX

FIBER OPTICS

FOX3 Matrix 160x
Modular Fiber Optic Matrix Switcher from 8x8 to 160x160

UNIQUE FEATURES

- I/O sizes from 8x8 to 160x160
- Switches 4K/60 video, audio, USB, control, and 3D sync over fiber optic cable
- Compatible with all Extron FOX3 Series transmitters and receivers
- Dante® audio network interface, DMP expansion port, and analog audio inputs and outputs
- RS-232 insertion from the Ethernet control port
- Multimode and Singlemode I/O boards available



FOX3 Matrix 160x no FPC

| Model | Version Description | Part Number |
|-------------------------|------------------------------------|-------------|
| FOX3 Matrix 160x no FPC | FOX3 Matrix 160x Frame no FPC..... | 60-1577-02 |
| FOX3 I/O 88 MM | 8x8 I/O Board - Multimode..... | 70-1107-01 |
| FOX3 I/O 88 SM | 8x8 I/O Board - Singlemode..... | 70-1107-02 |

FOX3 Matrix 320x
Modular Fiber Optic Matrix Switcher from 8x8 to 320x320

UNIQUE FEATURES

- I/O sizes from 8x8 to 320x320
- Switches 4K/60 video, audio, USB, control, and 3D sync over fiber optic cable
- Compatible with all Extron FOX3 Series transmitters and receivers
- Dante® audio network interface, DMP expansion port, and analog audio inputs and outputs
- RS-232 insertion from the Ethernet control port
- Multimode and Singlemode I/O boards available



FOX3 Matrix 320x no FPC

| Model | Version Description | Part Number |
|-------------------------|------------------------------------|-------------|
| FOX3 Matrix 320x no FPC | FOX3 Matrix 320x Frame no FPC..... | 60-1578-02 |
| FOX3 I/O 88 MM | 8x8 I/O Board - Multimode..... | 70-1107-01 |
| FOX3 I/O 88 SM | 8x8 I/O Board - Singlemode..... | 70-1107-02 |

NOW SHIPPING

NAV PRO AVoIP

- Pixel-Perfect Video
- Ultra-Low Latency
- Low Bitrates



NAV Pro AV over IP

The Only Solution Designed for the Enterprise Network

NAV® is the only no-compromise Pro AV over IP solution for distribution and switching of ultra-low latency, visually lossless video, audio, and USB 2.0 signals over Ethernet networks. Utilizing Extron's patented PURE3® codec, it delivers groundbreaking performance with visually lossless video over IP at resolutions up to 4K @ 60 Hz with 4:4:4 chroma sampling. PURE3's Intelligent Selective Streaming - ISS - leverages low motion content to achieve extremely low bitrates while maintaining visually lossless performance. The NAV Series is the only solution that offers both 1 Gbps and 10 Gbps encoders and decoders with compatibility across both systems.

Features

- PURE3 Intelligent Selective Streaming achieves low bit rates with low motion content while maintaining visually lossless performance
- Streams video and audio over standard Ethernet networks for flexible system design and distribution
- Supports HDMI 2.0 at resolutions up to 4K/60 @ 4:4:4
- Ultra-low latency with visually lossless compression using the patented Extron PURE3® codec
- Interoperable across 1 Gbps and 10 Gbps endpoints
- Supports the AES67 audio over IP standard, providing compatibility with Extron and third-party audio DSP processors
- Enhanced security with SRTP - Secure Real Time Transport Protocol
- 802.1X port-based Network Access Control for device authentication
- Microsoft® Active Directory integration for user management
- Multiple encoders and decoders can be deployed as an IP-based video and audio matrix

To learn more, visit extron.com/NAV

NAV PRO AV OVER IP

NAV 10E 101
10G Pro AV over IP Encoder - HDMI

The NAV 10E 101 is a Pro AV over IP encoder that streams ultra-low latency, high quality video and audio signals over 10 Gbps Ethernet networks at low bitrates. Using Extron's patented PURE3® codec, it delivers groundbreaking performance with real-time, visually lossless video at resolutions up to 4K@60 Hz with 4:4:4 chroma sampling and ultra-low latency. Adjustable bitrate settings enable transmission over 10 Gbps networks and compatibility with NAV® 1 Gbps endpoints, increasing scalability for large deployments. Support for AES67 audio over IP facilitates integration with DMP 128 Plus DSPs or other IP-enabled audio components. Purpose-built to support demanding professional AV applications, the highly scalable and powerful NAV platform enables secure deployment of AV signals to thousands of endpoints.

- FEATURES**
- Encodes and streams video and audio over 10 Gbps Ethernet networks
 - Supports HDMI 2.0 at resolutions up to 4K/60 @ 4:4:4
 - PURE3® Codec
 - PURE3 Intelligent Selective Streaming
 - Interoperable with 1 Gbps NAV® endpoints
 - Ultra-low latency with visually lossless compression
 - AES67 audio support
 - Industry-standard LC connectors for fiber optic connectivity provide robust, reliable transmission with inherent immunity to outside interference

| Model | Version Description | Part Number |
|-------------|-------------------------------------|-------------|
| NAV 10E 101 | 10G HDMI Encoder - Multimode | 60-1572-15 |
| NAV 10E 101 | 10G HDMI Encoder - Singlemode | 60-1572-16 |



NAV 10E 101 - Singlemode

NAV
PRO AVoIP

NOW SHIPPING

NAV 10E 501
10G Pro AV over IP Encoder - HDMI, Ethernet, and USB

The NAV 10E 501 is a Pro AV over IP encoder that streams ultra-low latency, high quality video, audio, Ethernet, and USB 2.0 signals over 10 Gbps Ethernet networks at low bitrates. Using Extron's patented PURE3® codec, it delivers groundbreaking performance with real-time, visually lossless video at resolutions up to 4K @ 60 Hz with 4:4:4 chroma sampling and ultra-low latency. Adjustable bitrate settings enable compatibility with NAV® 1 Gbps endpoints, increasing scalability for large deployments. Support for AES67 audio over IP facilitates flexible integration with DMP 128 Plus DSPs or other IP-enabled audio components. Purpose-built to support demanding professional AV applications, the highly scalable and powerful NAV platform enables secure deployment of AV signals to thousands of endpoints.

- FEATURES**
- Encodes and streams video, audio, Ethernet, and USB signals over 10 Gbps Ethernet networks
 - Supports HDMI 2.0 at resolutions up to 4K/60 @ 4:4:4
 - PURE3® Codec
 - PURE3 Intelligent Selective Streaming
 - Interoperable with 1 Gbps NAV® endpoints
 - Ultra-low latency with visually lossless compression
 - AES67 audio support
 - Industry-standard LC connectors for fiber optic connectivity provide robust, reliable transmission with inherent immunity to outside interference

| Model | Version Description | Part Number |
|-------------|--|-------------|
| NAV 10E 501 | 10G HDMI, Ethernet, USB Encoder - Multimode | 60-1572-01 |
| NAV 10E 501 | 10G HDMI, Ethernet, USB Encoder - Singlemode | 60-1572-02 |



NAV 10E 501 - Multimode

NAV
PRO AVoIP

NAV PRO AV OVER IP

NAV E 101 1G Pro AV over IP Encoder - HDMI

The NAV E 101 is a Pro AV over IP encoder that streams ultra-low latency, high quality video and audio signals over 1 Gbps Ethernet networks at low bitrates. Using Extron's patented PURE3® codec, it delivers groundbreaking performance with high quality video at resolutions up to 4K @ 60 Hz with 4:4:4 chroma sampling and ultra-low latency. The NAV E 101 is fully compatible with NAV® 10 Gbps endpoints, increasing scalability for large deployments. Support for AES67 audio over IP facilitates flexible integration with DMP 128 Plus DSPs or other IP-enabled audio components. Purpose-built to support demanding professional AV applications, the highly scalable and powerful NAV platform enables secure deployment of AV signals to thousands of endpoints.

FEATURES

- Encodes and streams video and audio over 1 Gbps Ethernet networks
- Supports HDMI 2.0 at resolutions up to 4K/60 @ 4:4:4
- PURE3® Codec
- PURE3 Intelligent Selective Streaming
- Interoperable with 10 Gbps NAV® endpoints
- Ultra-low latency with high quality video
- AES67 audio support
- PoE+ compatibility eliminates the need for a local power supply



NAV
PRO AVoIP

NOW SHIPPING

| Model | Version Description | Part Number |
|-----------|-----------------------|-------------|
| NAV E 101 | 1G HDMI Encoder | 60-1525-12 |

NAV E 501 1G Pro AV over IP Encoder - HDMI, Ethernet, and USB

The NAV E 501 is a Pro AV over IP encoder that streams ultra-low latency, high quality video, audio, Ethernet, and USB 2.0 signals over 1 Gbps Ethernet networks at low bitrates. Using Extron's patented PURE3® codec, it delivers groundbreaking performance with high quality video at resolutions up to 4K @ 60 Hz with 4:4:4 chroma sampling and ultra-low latency. The NAV E 501 is fully compatible with NAV® 10 Gbps endpoints, increasing scalability for large deployments. Support for analog audio, embedded digital HDMI audio, and AES67 audio over IP facilitate flexible integration with DMP 128 Plus DSPs or other IP-enabled audio components. Purpose-built to support demanding professional AV applications, the highly scalable and powerful NAV platform enables secure deployment of AV signals to thousands of endpoints.

FEATURES

- Encodes and streams video, audio, Ethernet, and USB signals over 1 Gbps Ethernet networks
- Supports HDMI 2.0 at resolutions up to 4K/60 @ 4:4:4
- PURE3® Codec
- PURE3 Intelligent Selective Streaming
- Interoperable with 10 Gbps NAV® endpoints
- Ultra-low latency with high quality video
- AES67 audio support
- PoE+ compatibility eliminates the need for a local power supply



NAV
PRO AVoIP

| Model | Version Description | Part Number |
|-----------|--------------------------------------|-------------|
| NAV E 501 | 1G HDMI, Ethernet, USB Encoder | 60-1525-01 |

For updated product availability, go to www.extron.com

Europe
+31.33.453.4040 / +800.3987.6673
+31.33.453.4050 FAX

Middle East
+971.4.299.1800
+971.4.299.1880 FAX

Asia
+65.6383.4400 / +800.7339.8766
+65.6383.4664 FAX

China
+86.21.3760.1568 / +4000.398766
+86.21.3760.1566 FAX

Japan
+81.3.3511.7655
+81.3.3511.7656 FAX

Extron

NAV PRO AV OVER IP

NAV 10SD 101

10G Pro AV over IP Scaling Decoder - HDMI

The NAV 10SD 101 is a Pro AV over IP scaling decoder that decodes and scales ultra-low latency, high quality video and audio signals over 10 Gbps Ethernet networks at low bitrates. Utilizing Extron's patented PURE3® codec, it delivers groundbreaking performance with real-time, visually lossless video at resolutions up to 4K @ 60 Hz with 4:4:4 chroma sampling and ultra-low latency. The NAV 10SD 101 is fully compatible with NAV® 1 Gbps endpoints, increasing scalability for large deployments. It also supports AES67 audio over IP, facilitating flexible integration with DMP 128 Plus DSPs or other IP-enabled audio components. Purpose-built to support demanding professional AV applications, the highly scalable and powerful NAV platform enables secure deployment of AV signals to thousands of endpoints.

FEATURES

- Decodes video and audio from 10 Gbps Ethernet networks
- Supports HDMI 2.0 at resolutions up to 4K/60 @ 4:4:4
- PURE3® Codec
- PURE3 Intelligent Selective Streaming
- Interoperable with 1 Gbps NAV® endpoints
- Ultra-low latency with visually lossless compression
- Advanced Extron Vector™ 4K scaling technology
- AES67 audio support
- WindoWall® Mode supports videowall applications



NAV 10SD 501 - Multimode

NAV
PRO AVoIP

NOW SHIPPING

| Model | Version Description | Part Number |
|--------------|--|-------------|
| NAV 10SD 101 | 10G HDMI Scaling Decoder - Multimode..... | 60-1572-19 |
| NAV 10SD 101 | 10G HDMI Scaling Decoder - Singlemode..... | 60-1572-20 |

NAV 10SD 501

10G Pro AV over IP Scaling Decoder - HDMI, Ethernet, and USB

The NAV 10SD 501 is a Pro AV over IP scaling decoder that decodes and scales ultra-low latency, high quality video, audio, Ethernet, and USB 2.0 signals over 10 Gbps Ethernet networks at low bitrates. Utilizing Extron's patented PURE3® codec, it delivers groundbreaking performance with real-time, visually lossless video at resolutions up to 4K @ 60 Hz with 4:4:4 chroma sampling and ultra-low latency. The NAV 10SD 501 is fully compatible with NAV® 1 Gbps endpoints, increasing scalability for large deployments. It also supports AES67 audio over IP, facilitating integration with DMP 128 Plus DSPs or other IP-enabled audio components. Purpose-built to support demanding professional AV applications, the highly scalable and powerful NAV platform enables secure deployment of AV signals to thousands of endpoints.

FEATURES

- Decodes video, audio, Ethernet, and USB signals from 10 Gbps Ethernet networks
- Supports HDMI 2.0 at resolutions up to 4K/60 @ 4:4:4
- PURE3® Codec
- PURE3 Intelligent Selective Streaming
- Interoperable with 1 Gbps NAV® endpoints
- Ultra-low latency with visually lossless compression
- Advanced Extron Vector™ 4K scaling technology
- AES67 audio support
- WindoWall® Mode supports videowall applications



NAV 10SD 501 - Multimode

NAV
PRO AVoIP

| Model | Version Description | Part Number |
|--------------|--|-------------|
| NAV 10SD 501 | 10G HDMI, Ethernet, USB Scaling Decoder-Multimode | 60-1572-07 |
| NAV 10SD 501 | 10G HDMI, Ethernet, USB Scaling Decoder-Singlemode | 60-1572-08 |

NAV PRO AV OVER IP

NAV SD 101

1G Pro AV over IP Scaling Decoder - HDMI

The NAV SD 101 is a Pro AV over IP scaling decoder that decodes and scales ultra-low latency, high quality video and audio signals over 1 Gbps Ethernet networks at low bitrates. Utilizing Extron's patented PURE3® codec, it delivers groundbreaking performance with high quality video at resolutions up to 4K @ 60 Hz with 4:4:4 chroma sampling and ultra-low latency. The NAV SD 101 is fully compatible with NAV® 10 Gbps endpoints, increasing scalability for large deployments. It also supports AES67 audio over IP, facilitating flexible integration with DMP 128 Plus DSPs or other IP-enabled audio components. Purpose-built to support demanding professional AV applications, the highly scalable and powerful NAV platform enables secure deployment of AV signals to thousands of endpoints.

FEATURES

- Decodes video and audio from 1 Gbps Ethernet networks
- Supports HDMI 2.0 at resolutions up to 4K/60 @ 4:4:4
- PURE3® Codec
- PURE3 Intelligent Selective Streaming
- Interoperable with 10 Gbps NAV® endpoints
- Ultra-low latency with high quality video
- Advanced Extron Vector™ 4K scaling technology
- AES67 audio support
- PoE+ compatibility eliminates the need for a local power supply
- WindoWall® Mode supports videowall applications



NAV
PRO AVoIP

NOW SHIPPING

| Model | Version Description | Part Number |
|------------|-------------------------------|-------------|
| NAV SD 101 | 1G HDMI Scaling Decoder | 60-1525-14 |

NAV SD 501

1G Pro AV over IP Scaling Decoder - HDMI, Ethernet, and USB

The NAV SD 501 is a Pro AV over IP scaling decoder that decodes and scales ultra-low latency, high quality video, audio, Ethernet, and USB 2.0 signals over 1 Gbps Ethernet networks at low bitrates. Utilizing Extron's patented PURE3® codec, it delivers groundbreaking performance with high quality video at resolutions up to 4K @ 60 Hz with 4:4:4 chroma sampling and ultra-low latency. The NAV SD 501 is fully compatible with NAV® 10 Gbps endpoints, increasing scalability for large deployments. It also supports AES67 audio over IP, facilitating flexible integration with DMP 128 Plus DSPs or other IP-enabled audio components. Purpose-built to support demanding professional AV applications, the highly scalable and powerful NAV platform enables secure deployment of AV signals to thousands of endpoints.

FEATURES

- Decodes video, audio, Ethernet, and USB signals from 1 Gbps Ethernet networks
- Supports HDMI 2.0 at resolutions up to 4K/60 @ 4:4:4
- PURE3® Codec
- PURE3 Intelligent Selective Streaming
- Interoperable with 10 Gbps NAV® endpoints
- Ultra-low latency with high quality video
- Advanced Extron Vector™ 4K scaling technology
- AES67 audio support
- PoE+ compatibility eliminates the need for a local power supply
- WindoWall® Mode supports videowall applications



NAV
PRO AVoIP

| Model | Version Description | Part Number |
|------------|--|-------------|
| NAV SD 501 | 1G HDMI, Ethernet, USB Scaling Decoder | 60-1525-03 |

For updated product availability, go to www.extron.com

Europe
+31.33.453.4040 / +800.3987.6673
+31.33.453.4050 FAX

Middle East
+971.4.299.1800
+971.4.299.1880 FAX

Asia
+65.6383.4400 / +800.7339.8766
+65.6383.4664 FAX

China
+86.21.3760.1568 / +4000.398766
+86.21.3760.1566 FAX

Japan
+81.3.3511.7655
+81.3.3511.7656 FAX

Extron

NAV PRO AV OVER IP

NAVigator
Pro AV over IP System Manager

NAVigator is a hardware appliance for secure management, configuration, and control of NAV® Pro AV over IP systems. Use the user-friendly web-based NAV System Manager to configure, monitor and control, backup and restore, run diagnostics, and troubleshoot. An entry level NAVigator system supports 16 endpoints and can expand with LinkLicense to support 48, 96, or 240 devices. Multiple NAVigator units working together can support thousands of endpoints. Two isolated, independent LAN ports facilitate control from a secondary network, enabling flexible design with enhanced security, and eliminating AV traffic on the corporate network. With Extron Pro Series control integration, the NAVigator acts as a centralized communication bridge for secure control of all attached devices. The NAVigator System Manager can be PoE powered over the network.

- FEATURES**
- Securely manages, configures, and controls NAV® Pro AV over IP systems
 - Each unit supports up to 240 NAV endpoints
 - Intuitive, web-based user interface for ease of use
 - Manages simultaneous configuration of multiple NAV devices
 - Secure encrypted communication between all endpoints
 - Power over Ethernet, or PoE, eliminates the need for a local power supply



NAVigator

NAV
PRO AVoIP

NOW SHIPPING

| Model | Version Description | Part Number |
|-------------|--------------------------------------|-------------|
| NAVigator | Entry Level Version for 16 Endpoints | 60-1534-01 |
| LinkLicense | NAVigator 48 Endpoints Upgrade | 79-2551-02 |
| LinkLicense | NAVigator 96 Endpoints Upgrade | 79-2551-03 |
| LinkLicense | NAVigator 240 Endpoints Upgrade | 79-2551-04 |

Extron

NAVigator

Admin

ENDPOINTS

TIES

EDID

TOOLS

Device Tools

System Tools

MONITORING

Settings

Endpoints

Search

☐

Filter

Sort

DISCOVER

ACTIONS

☐

E

Encoder Device 1: Input 001

NAV 10E 101

Room A

☐

E

Encoder Device 2: Input 002

NAV 10E 101

Room A

☐

E

Encoder Device 3: Input 003

NAV 10E 101

Room A

☐

E

Encoder Device 4: Input 004

NAV 10E 101

Room A

☐

D

Decoder Device 1: Output 001

NAV 10SD 101

Room A

☐

D

Decoder Device 2: Output 002

NAV 10SD 101

Room A

COLLABORATION

SM Series USBC SM

Show Me Cable for TeamWork Collaboration Systems

The Extron SM Series Show Me® cables provide the user interface for HDMI, DisplayPort, Mini DisplayPort, USB-C, or VGA sources in an Extron TeamWork® Collaboration System. Operation is simple and convenient: Connect the Show Me cable to your source device and press the Share button to share your content on the main presentation display. The cable meets Section 508 accessibility standards and is certified for use with AVEdge™ and Cable Cubby® enclosures for discreet, convenient access.

FEATURES

- Provides the user interface for digital or analog signals in a TeamWork® collaboration system
- **NEW** Now supports USB-C sources along with HDMI, DisplayPort, Mini DisplayPort, and VGA source connections
- Supports computer and video signals up to 4096x2160 @ 60 Hz
- Share button lights as it switches the connected source to the main presentation display
- Available in 6' (1.8 m) and 12' (3.6 m) lengths
- 24" (60 cm) control/tally pigtail for ease of installation
- Certified for use with AVEdge and Cable Cubby enclosures



NOW SHIPPING

| Model | Version Description | Part Number |
|--------------|------------------------------------|-------------|
| USBC-HDMI SM | USB-C to HDMI SM Cable, 6' (1.8m) | 26-733-06 |
| USBC-HDMI SM | USB-C to HDMI SM Cable, 12' (3.6m) | 26-733-12 |
| USBC-DP SM | USB-C to DP SM Cable, 6' (1.8m) | 26-734-06 |
| USBC-DP SM | USB-C to DP SM Cable, 12' (3.6m) | 26-734-12 |

WIRELESS

ShareLink Pro 500

Wired and Wireless Presentation Gateway

The ShareLink® Pro 500 is a Wired and Wireless Presentation Gateway that enables anyone to present content from computers, tablets, or smartphones on a display for easy and cost-effective collaboration. It features advanced technology that supports simultaneous display of up to four devices, including an HDMI-connected device. The HDMI input supports wired devices, such as a signage player or other AV source. The ShareLink Pro 500 has collaboration and moderator modes that facilitate both open and controlled collaboration environments. When used with Extron GVE - GlobalViewer® Enterprise software, multiple units can be managed across an enterprise or campus. The ShareLink Pro 500 offers professional capabilities that make it easy to integrate AV and mobile devices into huddle, meeting, and collaboration spaces.

FEATURES

- Wirelessly share content from mobile devices
- Provides full screen mirroring for all devices
- Supports 802.1X Authentication
- Supports Mac® and Windows® computers as well as Apple® and Android™ tablets and smartphones
- Dedicated app provides consistent user experience across platforms
- View up to four pieces of content simultaneously from any connected user



NOW SHIPPING

| Model | Version Description | Part Number |
|-------------------|---|-------------|
| ShareLink Pro 500 | Wired and Wireless Presentation Gateway | 60-1877-01 |

For updated product availability, go to www.extron.com

Europe
+31.33.453.4040 / +800.3987.6673
+31.33.453.4050 FAX

Middle East
+971.4.299.1800
+971.4.299.1880 FAX

Asia
+65.6383.4400 / +800.7339.8766
+65.6383.4664 FAX

China
+86.21.3760.1568 / +4000.398766
+86.21.3760.1566 FAX

Japan
+81.3.3511.7655
+81.3.3511.7656 FAX

Extron



TLP Pro 1525 Series



TLP Pro 1725 Series



TLP Pro 1225 Series

New Touchlink Pro Touchpanels Set Highest Standards for Powerful AV Control

Our latest 12", 15", and 17" touchpanels are packed with quad-core processing power and eight times more memory to meet even the most demanding AV control applications. These tabletop and wall mount touchpanels have capacitive edge-to-edge glass touchscreens with 24-bit color for a vibrant look and an ultra-responsive control surface. As an exciting upcoming feature, they will all soon support annotation when used with an Extron Annotator 300.

SERIES COMMON FEATURES

- **NEW** Fast, quad-core processing and eight times more memory - Allows for quicker configuration uploads and more storage for GUI pages.
- **NEW** Supports annotation when used in conjunction with an Extron Annotator 300
- Full-motion video preview and monitoring with HDMI and XTP inputs
- Compatible with all Extron IP Link Pro control processors and HC 400 Series systems
- Built-in speakers provide stereo audio — For video preview and audible feedback from button presses.
- Light sensor adjusts screen brightness as the ambient room lighting changes
- Configurable red and green status light indicate a room's availability or call status
- Two USB 2.0 ports — For future expansion
- 3.5mm headphone jack provides local audio out from the touchpanels
- Automatic clock synchronization allow touchpanels to display the accurate time and date
- Energy-saving features:
 - Adjustable sleep timer puts touchpanel into sleep mode
 - Motion detector wakes touchpanel
- Fully customizable using Extron control system software — GUI Designer combined with Global Configurator Plus, Global Configurator Professional, or Global Scripter.
- Manage, monitor, and control these devices remotely using GVE - GlobalViewer Enterprise Resource Management software
- Contemporary designs that complement the aesthetics of any environment
- Support the Extron Control App

To learn more, visit extron.com/tlpro121517

TOUCHLINK PRO TOUCHPANELS

TLP Pro 1225MG

12" Wall Mount TouchLink Pro Touchpanel

UNIQUE FEATURES

- 12" capacitive touchscreen with 1280x800 resolution and 16 million colors — Vibrant, edge-to-edge glass display with a more responsive control surface.
- PoE+ compatible — Product is powered directly by a PoE+ switch or injector, eliminating the need for bulky local power supplies.
- Mounts on a wall, lectern, or any flat surface — The included mounting hardware enables multiple mounting options. The optional back box, BB 700M, can be used where local codes require a rear metal enclosure.

| Model | Version Description | Part Number |
|-------------------|-------------------------------------|-------------|
| TLP Pro 1225MG | Black - Wall Mount | 60-1787-02 |
| TLP Pro 1225MG NC | Black - Wall Mount, No Camera | 60-1787-12 |



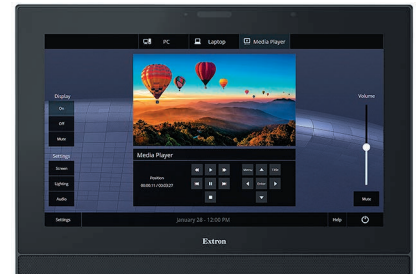
TLP Pro 1525MG

15" Wall Mount TouchLink Pro Touchpanel

UNIQUE FEATURES

- 15" capacitive touchscreen with 1366x768 resolution and 16 million colors — Vibrant, edge-to-edge glass display with a more responsive control surface.
- PoE+ compatible — Product is powered directly by a PoE+ switch or injector, eliminating the need for bulky local power supplies.
- Mounts on a wall, lectern, or any flat surface — The included mounting hardware enables multiple mounting options. The optional back box, BB 700M, can be used where local codes require a rear metal enclosure.

| Model | Version Description | Part Number |
|-------------------|-------------------------------------|-------------|
| TLP Pro 1525MG | Black - Wall Mount | 60-1789-02 |
| TLP Pro 1525MG NC | Black - Wall Mount, No Camera | 60-1789-12 |



TLP Pro 1725MG

17" Wall Mount TouchLink Pro Touchpanel

UNIQUE FEATURES

- 17" capacitive touchscreen with 1920x1080 resolution and 16 million colors — Vibrant, edge-to-edge glass display with a more responsive control surface.
- Touchpanel receives power and communication over a single Ethernet cable, eliminating the need for a local power supply - Power injector included
- Mounts on a wall, lectern, or any flat surface — The included mounting hardware enables multiple mounting options. The optional back box, BB 700M, can be used where local codes require a rear metal enclosure.

| Model | Version Description | Part Number |
|-------------------|-------------------------------------|-------------|
| TLP Pro 1725MG | Black - Wall Mount | 60-1791-02 |
| TLP Pro 1725MG NC | Black - Wall Mount, No Camera | 60-1791-12 |



For updated product availability, go to www.extron.com

Europe
+31.33.453.4040 / +800.3987.6673
+31.33.453.4050 FAX

Middle East
+971.4.299.1800
+971.4.299.1880 FAX

Asia
+65.6383.4400 / +800.7339.8766
+65.6383.4664 FAX

China
+86.21.3760.1568 / +4000.398766
+86.21.3760.1566 FAX

Japan
+81.3.3511.7655
+81.3.3511.7656 FAX

TOUCHLINK PRO TOUCHPANELS

TLP Pro 1225TG

12" Tabletop TouchLink Pro Touchpanel

UNIQUE FEATURES

- 12" capacitive touchscreen with 1280x800 resolution and 16 million colors — Vibrant, edge-to-edge glass display with a more responsive control surface.
- PoE+ compatible — Product is powered directly by a PoE+ switch or injector, eliminating the need for bulky local power supplies.
- Sits on a tabletop or installs on a VESA mount — Threaded holes in baseplate allow for secure mounting to a table, while VESA FDMI Type D 100mm mounting pattern standard is used for VESA mounting.
- Weighted base allows up to 40° of tilt
- Kensington lock support — Allows the touchpanel to be locked to a table or other flat surface.
- Supports the optional SMA-1 Swivel Mount Adapter
- Highly reliable, energy-efficient external universal power supply optional, replacement part #70-1246-01 — Provides worldwide power compatibility, with high demonstrated reliability and low power consumption for reduced operating costs.

| Model | Version Description | Part Number |
|-------------------|------------------------------------|-------------|
| TLP Pro 1225TG | Black - Tabletop & VESA | 60-1788-02 |
| TLP Pro 1225TG NC | Black - Tabletop & VESA, No Camera | 60-1788-12 |



TLP Pro 1525TG

15" Tabletop TouchLink Pro Touchpanel

UNIQUE FEATURES

- 15" capacitive touchscreen with 1366x768 resolution and 16 million colors — Vibrant, edge-to-edge glass display with a more responsive control surface.
- PoE+ compatible — Product is powered directly by a PoE+ switch or injector, eliminating the need for bulky local power supplies.
- Sits on a tabletop or installs on a VESA mount — Threaded holes in baseplate allow for secure mounting to a table, while VESA FDMI Type D 100mm mounting pattern standard is used for VESA mounting.
- Weighted base allows up to 40° of tilt
- Kensington lock support — Allows the touchpanel to be locked to a table or other flat surface.
- Supports the optional SMA-1 Swivel Mount Adapter
- Highly reliable, energy-efficient external universal power supply optional, replacement part #70-1246-01 — Provides worldwide power compatibility, with high demonstrated reliability and low power consumption for reduced operating costs.

| Model | Version Description | Part Number |
|-------------------|------------------------------------|-------------|
| TLP Pro 1525TG | Black - Tabletop & VESA | 60-1790-02 |
| TLP Pro 1525TG NC | Black - Tabletop & VESA, No Camera | 60-1790-12 |



TLP Pro 1725TG

17" Tabletop TouchLink Pro Touchpanel

UNIQUE FEATURES

- 17" capacitive touchscreen with 1920x1080 resolution and 16 million colors — Vibrant, edge-to-edge glass display with a more responsive control surface.
- Touchpanel receives power and communication over a single Ethernet cable, eliminating the need for a local power supply - Power injector included
- Sits on a tabletop or installs on a VESA mount — Threaded holes in baseplate allow for secure mounting to a table, while VESA FDMI Type D 100mm mounting pattern standard is used for VESA mounting.
- Weighted base allows up to 40° of tilt
- Kensington lock support — Allows the touchpanel to be locked to a table or other flat surface.
- Supports the optional SMA-1 Swivel Mount Adapter
- Highly reliable, energy-efficient external universal power supply optional, replacement part #70-1246-01 — Provides worldwide power compatibility, with high demonstrated reliability and low power consumption for reduced operating costs.

| Model | Version Description | Part Number |
|-------------------|------------------------------------|-------------|
| TLP Pro 1725TG | Black - Tabletop & VESA | 60-1792-02 |
| TLP Pro 1725TG NC | Black - Tabletop & VESA, No Camera | 60-1792-12 |





Transform your TouchLink Pro Touchpanel into a Powerful All-in-One Control System

Extron LinkLicense for TouchLink Control and the TLCA 1 TouchLink Control Adapter are two powerful Pro Series control options that will transform your wall mount, tabletop, and Cable Cubby TouchLink Pro touchpanels into powerful, all-in-one control systems. These innovative tools add flexibility and power to our latest TouchLink Pro touchpanels, including the TLP Pro 525 Series, TLP Pro 725 Series, TLP Pro 1025 Series and TLP Pro 300M.

Integrated touchpanel control systems provide many advantages including simpler system designs and streamlined system deployment. In addition, when you introduce a touchpanel control system into a room where an Extron touchpanel and a control processor already exists, you will be able remove the control processor from the system and use it elsewhere.

LinkLicense for TouchLink Control

Extron LinkLicense for TouchLink Control is a powerful, easy way to turn your TouchLink Pro touchpanel into a full-featured, standalone control system. With this LinkLicense, you can control your AV devices via Ethernet directly from the Ethernet port on the touchpanel. And, by adding the optional TLCA 1 TouchLink Control Adapter, you can control a broad range of system devices directly from the touchpanel using the variety of ports on the control adapter.



TLCA 1

The Extron TLCA 1 is a TouchLink Control Adapter designed to add traditional control ports to your touchpanel installed with LinkLicense for TouchLink Control. It features two bidirectional serial ports, one digital input, one IR port, and two relays for control of sources, directly at the touchpanel.



| Model | Version Description | Part Number |
|-------------|---------------------------------|-------------|
| LinkLicense | TouchLink Control Upgrade | 79-2577-01 |
| TLCA 1 | Control Adapter..... | 60-1748-10 |

To learn more, visit extron.com/tlca

TOUCHLINK PRO TOUCHPANELS

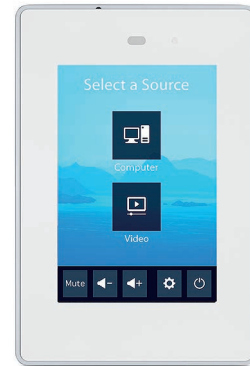
TLP Pro 300M

3.5" Portrait Wall Mount TouchLink Pro Touchpanel

The Extron TLP Pro 300M is a 3.5" portrait wall mount TouchLink® Pro Touchpanel. It is designed to control video, audio, lighting, shades, HVAC, security, and other systems within virtually any environment. This touchpanel is equipped with a 320x480 resolution capacitive touchscreen built with scratch and smudge-resistant Corning® Gorilla Glass®. The TLP Pro 300M can be conveniently mounted in a one-gang junction box without the need for additional mounting hardware. The TLP Pro 300M is ideal for any environment requiring a wall-mountable, portrait touchpanel with a fully customizable interface.

FEATURES

- 3.5" capacitive touchscreen with a 320x480 resolution
- Contemporary portrait design that complements the aesthetics of any environment
- Gorilla Glass® screen is tough, scratch and smudge-resistant
- Compatible with all Extron IP Link Pro control processors and HC 400 Series systems
- Power over Ethernet provides power and communication over a single Ethernet cable



NOW SHIPPING

| Model | Version Description | Part Number |
|--------------|------------------------------|-------------|
| TLP Pro 300M | Black - Wall Mount, Portrait | 60-1667-02 |
| TLP Pro 300M | White - Wall Mount, Portrait | 60-1667-03 |

TSP Series

TouchLink Screen Protectors

The Extron TSP Series screen protectors shield TouchLink Pro touchpanels from damage. Made specifically for the 5", 7", and 10" TouchLink Pro touchpanels, these tempered glass screen protectors provide excellent touch sensitivity for smooth unimpeded gestures, equivalent to a touchscreen without a TSP protector installed. The included alcohol wipe, cleaning cloth, and dust removal tape ensure proper installation. The TSP Series can be easily removed from the touchscreen if no longer needed.

FEATURES

- Provides extra screen protection for 5", 7", and 10" TouchLink Pro touchpanels
- Provides excellent touch sensitivity for smooth, unimpeded gestures
- Easy to mount and easy to remove
- Includes alcohol wipe, cleaning cloth, and dust removal tape to ensure proper installation



NOW SHIPPING

| Model | Version Description | Part Number |
|-------|--|-------------|
| TSP 1 | 5" TouchLink Pro Screen Protector, Qty. 1 | 70-1293-10 |
| TSP 2 | 7" TouchLink Pro Screen Protector, Qty. 1 | 70-1293-20 |
| TSP 3 | 10" TouchLink Pro Screen Protector, Qty. 1 | 70-1293-30 |

TOUCHLINK PRO INTERFACE

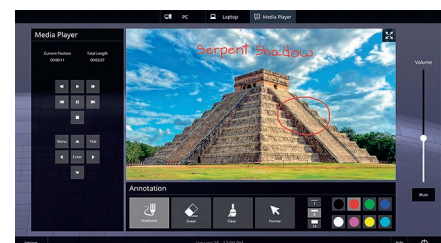
TLI Pro 201

4K TouchLink Interface with Built-In Annotation

The Extron TLI Pro 201 is a TouchLink® Interface that allows a third-party 4K touchscreen display to be used as a point of control within an Extron Pro Series control system. This unique interface includes a scaled HDCP 2.3-compliant HDMI input for video preview, supporting resolutions up to 4K/30. The scaled output supports signal resolutions up to 4K/30 at 4:4:4. The TLI Pro 201 has built in annotation features, allowing a presenter to draw and point on 4K video or computer sources using a third-party touchscreen display and/or mouse. In addition, it also features the convenience of PoE, which allows it to receive power and communication over a single Ethernet cable.

FEATURES

- Utilize a third-party 4K touchscreen display as a point of control within an Extron Pro Series control system
- Compatible with third-party touchscreen displays up to 4K/30 at 4:4:4
- Compatible with all IP Link Pro control processors and HC 400 Series Meeting Space Collaboration Systems
- HDCP 2.3 compliant HDMI Input for full-motion video preview and monitoring
- Built in annotation features
- Fast processing and ample memory



Annotation user interface for the TLI Pro 201 created in GUI Designer

| Model | Version Description | Part Number |
|-------------|------------------------|-------------|
| TLI Pro 201 | 4K TouchLink Interface | 60-1669-01 |

IPCP Pro xi Series



Our Most Powerful AV Control Processors

As AV systems grow in size and complexity, control systems must meet every demand with fast, dependable performance. At the core of these control systems, our new IPCP Pro xi Series control processors deliver the most powerful and versatile performance standards to date. With up to four times more memory and significantly-enhanced processing power for increased deployment speeds and improved runtime functionality, this new series is designed to excel in even the most demanding AV applications. In addition to increases in performance, these new processors feature advanced security standards and Gigabit Ethernet, which ensures compatibility with multiple TouchLink Pro touchpanels and Network Button Panels using a standard network infrastructure. The new IPCP Pro xi Series control processors are an ideal choice for controlling multiple devices and control signal types within today's most challenging control system designs.

What's new:

The IPCP Pro Q xi Series control processors are multi-network models and feature:

- Quad core processors
- Four times more memory with 2 GB of RAM and 8 GB of Flash

The IPCP Pro xi Series control processors are single network models and feature:

- Upgraded single core processors
- Two times more memory with 1 GB of RAM and 8 GB of Flash

SERIES COMMON FEATURES

- Supports TouchLink Pro touchpanels, eBUS® button panels, and Network Button Panels
- Supports secure industry standard communications protocols
- Supports LinkLicense® for User Interfaces
- Supports popular BMS – Building Management System protocols, such as BACnet, KNX, and DALI
- Multi-level password protection
- Fully customizable using Extron control system software
- An extensive library of Global Configurator device drivers and Global Scripter modules support devices from a broad range of manufacturers, streamlining configuration and programming

To learn more, visit extron.com/ipcpproxi

IP LINK PRO

IPCP Pro 555Q xi**IP Link Pro Quad Core Control Processor****UNIQUE FEATURES**

- **NEW** Quad Core processor and four times more memory for increased upload speeds, faster runtime performance, and more sophisticated projects
- AV LAN port allows AV devices to be isolated from the corporate network
- Six bidirectional RS-232 serial ports with software handshaking
- Two bidirectional RS-232/RS-422/RS-485 serial ports with hardware and software handshaking
- Eight IR/Serial ports for one-way control of external devices
- Four Flex I/O ports
- Eight relays for controlling room functions
- Four independently switched 12 VDC outputs
- DHCP server for AV LAN
- The LAN port will permit discovery, setup and firmware updates for Extron devices connected to the AV LAN port
- Integrated IR Learning capability
- 1U, half rack width metal enclosure

| Model | Version Description | Part Number |
|------------------|---|-------------|
| IPCP Pro 555Q xi | IP Link Pro Control Processor..... | 60-1917-01 |
| IPCP Pro 555Q xi | IP Link Pro Control Proc., LL UI Upgrade..... | 60-1917-01A |

**IPCP Pro 360Q xi****IP Link Pro Quad Core Control Processor****UNIQUE FEATURES**

- **NEW** Quad Core processor and four times more memory for increased upload speeds, faster runtime performance, and more sophisticated projects
- Three AV LAN ports allow AV devices to be isolated from the corporate network
- AV LAN ports provide PoE+ to external devices
- Two bidirectional RS-232 serial ports with software handshaking
- One bidirectional RS-232/RS-422/RS-485 serial port with hardware and software handshaking
- Two IR/Serial ports for one-way control of external devices
- Four Digital I/O ports
- Four relays for controlling room functions
- DHCP server for AV LAN
- The LAN port will permit discovery, setup and firmware updates for Extron devices connected to the AV LAN port
- Extron Pro Series control devices
- Integrated IR learning capability
- 1U, half rack width metal enclosure

| Model | Version Description | Part Number |
|------------------|---|-------------|
| IPCP Pro 360Q xi | IP Link Pro Control Processor..... | 60-1916-01 |
| IPCP Pro 360Q xi | IP Link Pro Control Proc., LL UI Upgrade..... | 60-1916-01A |

**IPCP Pro 255Q xi****IP Link Pro Quad Core Control Processor****UNIQUE FEATURES**

- **NEW** Quad Core processor and four times more memory for increased upload speeds, faster runtime performance, and more sophisticated projects
- AV LAN port allows AV devices to be isolated from the corporate network
- One bidirectional RS-232 serial port with software handshaking
- One bidirectional RS-232/RS-422/RS-485 serial port with hardware and software handshaking
- One IR/Serial port for one-way control of external devices
- Four Digital I/O ports
- Two relays for controlling room functions
- Remote volume control port for the Extron MPA Series and select XTRA™ Series amplifiers
- DHCP server for AV LAN
- The LAN port will permit discovery, setup and firmware updates for Extron devices connected to the AV LAN port
- Integrated IR Learning capability
- 1U, quarter rack width metal enclosure

| Model | Version Description | Part Number |
|------------------|---|-------------|
| IPCP Pro 255Q xi | IP Link Pro Control Processor..... | 60-1914-01 |
| IPCP Pro 255Q xi | IP Link Pro Control Proc., LL UI Upgrade..... | 60-1914-01A |



IP LINK PRO

IPCP Pro 355DRQ xi

IP Link Pro Quad Core Control Processor - DIN Rail

UNIQUE FEATURES

- **NEW** Quad Core processor and four times more memory for increased upload speeds, faster runtime performance, and more sophisticated projects
- Securely mounts to an industry-standard DIN rail commonly used by third party automation equipment in racks and cabinets
- AV LAN port allows AV devices to be isolated from the corporate network
- Two bidirectional RS-232 serial ports with software handshaking
- One bidirectional RS-232/RS-422/RS-485 serial port with hardware and software handshaking
- Two IR/Serial ports for one-way control of external devices
- Four digital I/O ports
- Four relays for controlling room functions
- DHCP server for AV LAN
- The LAN port will permit discovery, setup and firmware updates for Extron devices connected to the AV LAN port



| Model | Version Description | Part Number |
|--------------------|--|-------------|
| IPCP Pro 355DRQ xi | IP Link Pro Control Processor, DIN Rail | 60-1915-01 |
| IPCP Pro 355DRQ xi | IP Link Pro Control Proc., DIN Rail, LL UI Upgrade | 60-1915-01A |

IPCP Pro 550 xi

IP Link Pro Control Processor

UNIQUE FEATURES

- **NEW** Single Core processor and two times more memory for increased project upload speeds, faster runtime performance and more sophisticated projects
- Six bidirectional RS-232 serial ports with software handshaking
- Two bidirectional RS-232/RS-422/RS-485 serial ports with hardware and software handshaking
- Eight IR/Serial ports for one-way control of external devices
- Four Flex I/O ports
- Eight relays for controlling room functions
- Four independently switched 12 VDC outputs
- Integrated IR Learning capability
- 1U, half rack width metal enclosure



| Model | Version Description | Part Number |
|-----------------|--|-------------|
| IPCP Pro 550 xi | IP Link Pro Control Processor | 60-1913-01 |
| IPCP Pro 550 xi | IP Link Pro Control Proc., LL UI Upgrade | 60-1913-01A |

IPCP Pro 350 xi

IP Link Pro Control Processor

UNIQUE FEATURES

- **NEW** Single Core processor and two times more memory for increased project upload speeds, faster runtime performance and more sophisticated projects
- Two bidirectional RS-232 serial ports with software handshaking
- One bidirectional RS-232/RS-422/RS-485 serial port with hardware and software handshaking
- Two IR/Serial ports for one-way control of external devices
- Four Digital I/O ports
- Four relays for controlling room functions
- Integrated three port network switch
- Integrated IR Learning capability
- 1U, half rack width metal enclosure



| Model | Version Description | Part Number |
|-----------------|--|-------------|
| IPCP Pro 350 xi | IP Link Pro Control Processor | 60-1912-01 |
| IPCP Pro 350 xi | IP Link Pro Control Proc., LL UI Upgrade | 60-1912-01A |

For updated product availability, go to www.extron.com

IP LINK PRO

IPCP Pro 250 xi
IP Link Pro Control Processor

UNIQUE FEATURES

- **NEW** Single Core processor and two times more memory for increased project upload speeds, faster runtime performance and more sophisticated projects
- One bidirectional RS-232 serial port with software handshaking
- One bidirectional RS-232/RS-422/RS-485 serial port with hardware and software handshaking
- One IR/Serial port for one-way control of external devices
- Four Digital I/O ports
- Two relays for controlling room functions
- Remote volume control port for the Extron MPA Series and select XTRA™ Series amplifiers
- Integrated IR Learning capability
- 1U, quarter rack width metal enclosure



| Model | Version Description | Part Number |
|-----------------|---|-------------|
| IPCP Pro 250 xi | IP Link Pro Control Processor..... | 60-1911-01 |
| IPCP Pro 250 xi | IP Link Pro Control Proc., LL UI Upgrade..... | 60-1911-01A |

IPCP Pro PCS1 xi
IP Link Pro Power and Device Control Processor

UNIQUE FEATURES

- **NEW** Single Core processor and two times more memory for increased project upload speeds, faster runtime performance and more sophisticated projects
- Intelligent current sensing with alarm
- Outlet status retention during power loss
- One male AC input and one female AC output - both using IEC connections
- Easily-accessible, front panel circuit breaker adds over-current protection for remotely controlled connected devices
- One bidirectional RS-232 serial port with software handshaking
- One IR/Serial port for one-way control of external devices
- Three digital I/O ports
- Supports control system synchronization
- 1U, quarter rack width metal enclosure



| Model | Version Description | Part Number |
|------------------|---|-------------|
| IPCP Pro PCS1 xi | IP Link Pro Control Processor..... | 60-1910-01 |
| IPCP Pro PCS1 xi | IP Link Pro Control Proc., LL UI Upgrade..... | 60-1910-01A |

NETWORK BUTTON PANELS

NBP 50

Network Button Panel with 6 Buttons - US 2-Gang

The Extron NBP 50 Network Button Panel is a fully-customizable AV system control interface for Extron Pro Series control systems and HC 400 Series products. Network Button Panels connect to a control processor using standard Ethernet. These customizable, easy-to-use control panels work in conjunction with a control processor to perform a wide variety of AV system functions such as display On/Off, input switching, volume control, and much more. The NBP 50 features six dual-colored backlit buttons for easy operation in low-light environments and the convenience of PoE. The NBP 50 mounts in a two-gang junction box and includes black and white faceplates and mud ring.

FEATURES

- Fully customizable Network Button Panel integrates easily with an Extron Pro Series control system or HC 400 Series collaboration systems
- Six dual-color, customizable, backlit buttons
- Network Button Panels use standard Ethernet connectivity
- PoE compatible
- Removable button caps make changing labels in the field easy



NOW SHIPPING

| Model | Version Description | Part Number |
|--------|-----------------------------------|-------------|
| NBP 50 | 6 Button, 2-Gang, Black and White | 60-1953-01 |

SOFTWARE

GlobalViewer Enterprise

Server-Based AV Resource Management Software

GlobalViewer® Enterprise - GVE software simplifies AV system resource management with intuitive control for hundreds of common AV tasks. Whether you're working with 5 or 5000 rooms, GVE provides a powerful, flexible way to manage, monitor, and control nearly any device over a standard network. Support teams will appreciate the agility and flexibility GVE provides to access usage data, create reports, and control the system from any computer on the network. The Help Desk view offers a look at the entire enterprise in a single window and access to detailed room data and control with just a click of a mouse.

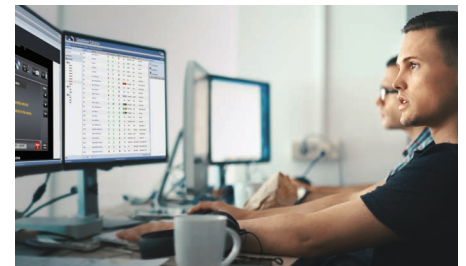
FEATURES

- Easily manage all AV devices and meeting rooms across the campus and enterprise
- Track and analyze device and room usage, proactively plan maintenance activities, and maintain inventory lists using customizable reports
- Custom reporting tools
- Extron GlobalViewer Enterprise Commissioning with every installation ensures a trouble-free system installation and optimal performance

- Enhanced monitors and schedules based on location and device type
- Seamless integration with facility scheduling software
- Extron Control for Web 2.0 with HTML5 and JavaScript
 - Automatically turn on all devices for scheduled meetings
 - Upon leaving the room, return devices to the previous state
- Directly view and monitor the status of ShareLink Pro, SMP – Streaming Media Processor devices, and TLS - TouchLink Scheduling panels
- View vTLP - Virtual TouchLink Pro panels using HTML5 which supports multiple browsers
- Monitor the health and status of TLS - TouchLink Scheduling panels

COMING SOON

- Directly view and monitor the status of NAV devices



To learn more,
visit extron.com/GVE

NOW AVAILABLE

For updated product availability, go to www.extron.com

ROOM SCHEDULING

Extron Room Scheduling Book a Room the Easy Way

We have simplified the room booking experience with Extron Room Scheduling and our TLS Series scheduling panels. This system connects directly to popular calendaring services including Microsoft Exchange, Office 365, Google Calendar, and others. Users can reserve rooms with a couple taps on the panel or from their mobile device. Free Room Agent software makes setup a breeze, allowing you to customize the touchpanel interface with the meeting options you need. Multiple mounting choices are available for the touchpanels, including on-wall, in-wall, as well as secure mounting to almost any flat surface, including mullion, glass, or granite.

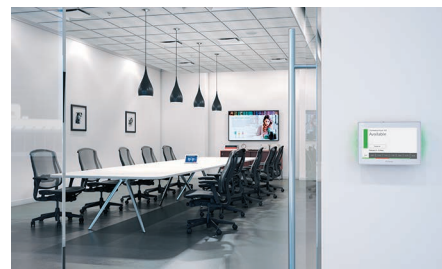
FEATURES

- Make on-demand reservations from the touchpanel, computer, or any mobile device that connects to Microsoft® Exchange, Office 365™, Google Calendar™, 25Live®, EMS, NFS, and Ad Astra

- Use a variety of 5", 7", and 10" TLS TouchLink Scheduling panel sizes and mounting options ensure the right look for any application
- Easily deploy one or multiple touchpanels with similar settings
- No annual subscription or maintenance fees
- All communication between the touchpanel and calendar server is encrypted and secure
- A downloadable Scheduling Activity file lets you generate analytics on room usage, activity patterns, and trends across the enterprise
- Supports occupancy sensors to monitor the environment
- Supports 27 languages

COMING SOON

- Proxy Support
- Microsoft OAuth 2.0 Integration



To learn more,
visit extron.com/RS

NOW AVAILABLE

Wayfinding Interface Easily Connect Users with Meeting Spaces

The TLSI 201 is an Interactive Wayfinding Interface that provides real-time meeting space availability, status, and location information using a centralized display. Designed to connect directly with Extron Room Scheduling panels, it enables users to easily locate meeting spaces and make ad hoc meeting reservations. Simply configure the TLSI 201 interface using free Extron Room Agent™ software to view and book meeting spaces for the current day or week in list or map view layouts. The Interactive Wayfinding Interface features a centralized, at-a-glance meeting space visibility and booking solution is ideal for use in high traffic areas, including building lobbies, meeting room hallways, and corridors. User-friendly and intuitive, the TLSI 201 brings additional value to Extron Room Scheduling applications.

FEATURES

- Find and book a meeting space for current day or week from a centralized location
- Easily navigate real-time information on a list layout or customer-provided map
- Connects directly with TouchLink® scheduling panels
- Configurable with free Room Agent™ software
- Ideal for use with third-party 40" or larger 1080p interactive displays
- Requires no additional programming or external processors



NOW SHIPPING

| Model | Version Description | Part Number |
|----------|----------------------------------|-------------|
| TLSI 201 | Interactive Wayfinding Interface | 60-1669-101 |

Room Scheduling and Wayfinding connect directly to popular calendar services:



ROOM SCHEDULING

Mullion Mount Kits for TouchLink Scheduling Panels

Extron Mullion Mount Kits are specifically designed to mount TouchLink Scheduling Panels securely on the vertical frame that separates a door opening from the adjacent glass wall. This kit provides an aesthetic and inconspicuous appearance to blend in with the design of the TLS panel and mullion frame. The kits are available in black and aluminum finishes, and include a number of mounting accessories that aid in installation.

FEATURES

- Used to securely mount a TouchLink Scheduling panel on the vertical frame that separates a door opening from the adjacent glass wall
- Aesthetically pleasing appearance, both outside the room and inside the room
- Design allows the LED lights on either side of the touchpanel to still be visible after mounting
- Can be mounted to meet ADA height compliance
- Does not hinder the glass wall as no adhesive is required



MMK1 – Black Finish



MMK2 – Aluminum Finish

NOW SHIPPING

| Model | Version Description | Part Number |
|-------|---|-------------|
| MMK 1 | TLS 525M Mullion Mount Kit - Black | 70-1264-12 |
| MMK 1 | TLS 525M Mullion Mount Kit - Aluminum | 70-1264-18 |
| MMK 2 | TLS 725M Mount Kit - Black | 70-1264-22 |
| MMK 2 | TLS 725M Mount Kit - Aluminum | 70-1264-28 |
| MMK 3 | TLS 1025M Mount Kit - Black | 70-1264-32 |
| MMK 3 | TLS 1025M Mount Kit - Aluminum | 70-1264-38 |



MMK2 Mullion Mount with TLS 725M TouchLink Scheduling Panel

For updated product availability, go to www.extron.com

Europe
+31.33.453.4040 / +800.3987.6673
+31.33.453.4050 FAX

Middle East
+971.4.299.1800
+971.4.299.1880 FAX

Asia
+65.6383.4400 / +800.7339.8766
+65.6383.4664 FAX

China
+86.21.3760.1568 / +4000.398766
+86.21.3760.1566 FAX

Japan
+81.3.3511.7655
+81.3.3511.7656 FAX

Extron

MGP 641



18 Gbps
4K/60 4:4:4

VECTOR 4K
SCALING

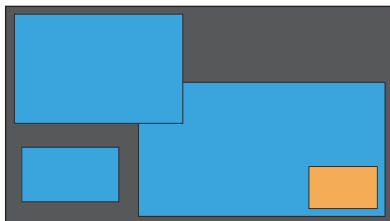
DTP
SYSTEMS

Easily Scale and Present Up to Four 4K/60 Video Sources on a Single Display

The Extron MGP 641 is a multi-window processor that scales and presents up to four 4K/60 source signals on a single screen. It features advanced Extron Vector™ 4K scaling technology for unequalled image quality. The HDCP 2.3-compliant processor includes four HDMI 2.0 inputs and an additional HDMI background input. HDMI and DTP2 4K/60 outputs deliver duplicate signals to local and remote displays. Audio de-embedding simplifies integration. These features and capabilities enable the MGP 641 processor to deliver professional presentations that are ideal for high-end environments and live events.

Flexible Source Windowing

The MGP 641 offers extensive windowing options, enabling side-by-side, overlap, and picture in picture positioning of live sources and locally stored graphics.



Restriction-free window placement

Window Presets and Transitions

128 window presets allow for quick saving and recall of size, positioning, priority, and border style for each window. Transitions between presets can be set to Cut or Animated. The Animated effect dynamically resizes and repositions the windows to the selected preset's locations.

Source and Output Rotation

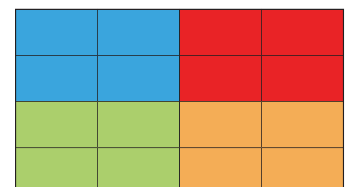
Content received on Inputs 2 and 4 can be rotated 90 degrees. The duplicate HDMI and DTP2 output signals can also be rotated 90 degrees to accommodate displays arranged in portrait or landscape orientations.

4K/60 HDMI Background Input

The HDMI background input supports animated backgrounds, tickers, or other live content. It can also accommodate additional MGP 641 processors to present up to 16 fully customizable windows.



Live video or scrolling text



Cascade up to four MGP 641 processors

| Model | Version Description | Part Number |
|---------|---------------------|-------------|
| MGP 641 | 4 HDMI Inputs | 60-1574-01 |

To learn more, visit extron.com/MGP641

VIDEOWALL PROCESSORS

Quantum Ultra Expansion Cards

Link Multiple Processor Frames to Create Large Videowall Systems

Quantum Expansion In and Quantum Expansion Out cards link multiple Quantum Ultra videowall processors together, simplifying the design, integration, and operation of large videowalls. Three fiber optic cables link each pair of expansion cards, which extends the high-speed HyperLane® bus between the processors to create a common, shared bus. This makes all input sources available to all video outputs. Once configured, the processors operate as a single system without the need for front-end switching or distribution amplifiers. Up to five processors can be linked using four pairs of expansion cards. Quantum Ultra outputs are genlocked across all processors, maintaining image synchronization and eliminating video tearing.

FEATURES

- Links multiple Quantum Ultra processors together to create a single large system
- Create videowalls with up to five processors and 168 total inputs/outputs
- Three fiber optic cables extend the high-speed HyperLane bus between each expansion card pair
- Uncompressed data link between expansion cards retains critical image quality
- Eliminates the need for front-end switching / distribution of sources across multiple processors
- Outputs are genlocked across each Quantum Ultra processor
- Multiple processors operate as single, cohesive system

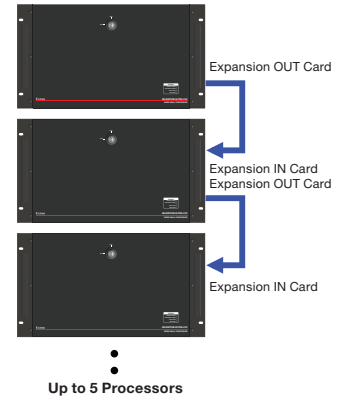
| Model | Version Description | Part Number |
|-----------------------|-------------------------------|-------------|
| Quantum Expansion IN | Expansion Input Card..... | 70-1270-01 |
| Quantum Expansion OUT | Expansion Output Card..... | 70-1271-01 |
| MPO MM 1m | Expansion Link Cable 1m..... | 26-737-01 |
| MPO MM 10m | Expansion Link Cable 10m..... | 26-737-10 |



Quantum Expansion IN



Quantum Expansion OUT



Quantum Ultra Connect

4K Videowall Processing for Small to Mid-Sized Applications

Extron Quantum® Ultra Connect 84 and Quantum Ultra Connect 128 are eight and twelve HDMI input videowall processors for systems with up to four or eight displays. They deliver the same high-quality scaling and real-time performance as Extron's Quantum Ultra processors, featuring the Vector™ 4K scaling engine and HyperLane® high-speed video bus technology. Custom output resolutions, input and output image rotation, and bezel compensation provide compatibility with a wide variety of display technologies. Flexible window placement allows side-by-side, overlap, and picture in picture image positioning. For HDCP-encrypted content, Key Minder® and SpeedSwitch® Technology deliver virtually instantaneous switching. RS-232, USB, and Ethernet interfaces provide control system connection, eliminating the need for a dedicated control computer.

FEATURES

- Cost effective 4K/60 HDMI videowall processors for videowalls with up to eight screens
- Supports 4K on one, two, or four connections
- Extron Vector™ 4K scaling engine
- 400 Gbps HyperLane® video bus delivers unparalleled real-time performance
- Direct control via RS-232, USB, and Ethernet
- Designed for 24/7, mission-critical environments
- Integrates easily into a diverse array of 4K environments such as lobbies, auditoriums, and simulation environments
- Seamless transitions
- 3U, 5-slot card frame
- Solid-state storage
- Write-protected operating system

| Model | Version Description | Part Number |
|---------------------------|---------------------------|-------------|
| Quantum Ultra Connect 84 | 8 Inputs, 4 Outputs..... | 60-1898-01 |
| Quantum Ultra Connect 128 | 12 Inputs, 8 Outputs..... | 60-1898-02 |



Quantum Ultra Connect 84

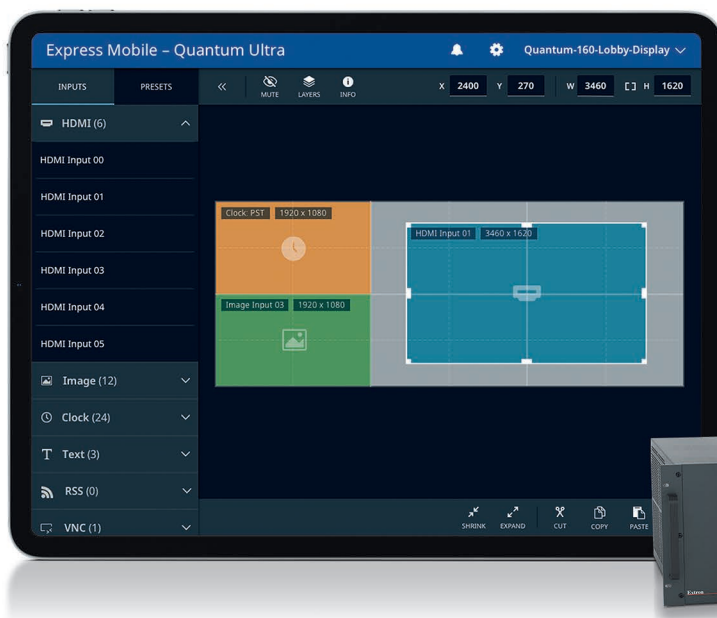


Quantum Ultra Connect 128

NOW SHIPPING

For updated product availability, go to www.extron.com

VIDEOWALL PROCESSORS



NOW AVAILABLE

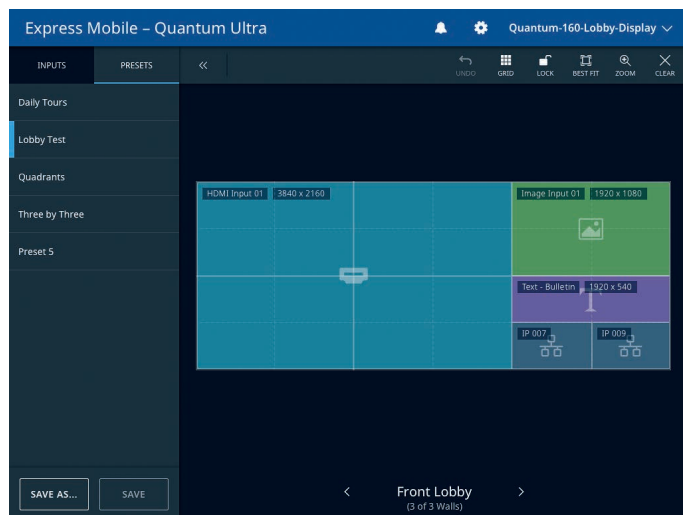


EMS Express Mobile Software - Quantum Ultra Multi-platform Control Application for Videowall Processors

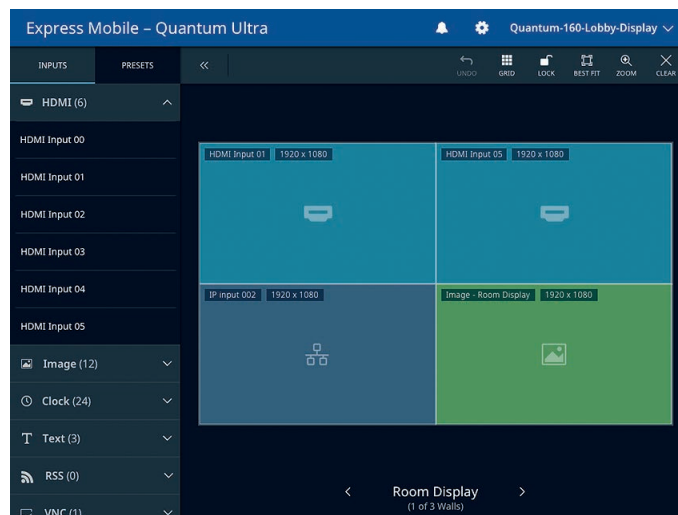
EMS Express Mobile Software - Quantum Ultra is an application designed to provide intuitive user control of Extron Quantum Ultra videowall processors. It is compatible with Apple® iOS® and Google® Android™ tablets and Microsoft® Surface and Windows 10 PCs. The software combines the freedom of wireless control with an easy to use tablet application operated with familiar finger gestures. These include drag and drop, swipe, and tap. It facilitates preset selection, window size and position, source selection, and other common operational tasks, and can work in tandem with VCS and a control system. Up to 10 users can control one or more videowalls. Separate User, Designer, and Administrator credentials define operational roles. EMS-Quantum Ultra is ideal for use with systems requiring one or more points of control through a user-friendly interface.

FEATURES

- Provides intuitive control of Extron Quantum Ultra videowall processors from a tablet or Windows 10 PC
- Compatible with Apple® iOS®, Google® Android™, and Microsoft® Surface tablets
- Simplifies common operational tasks, such as preset selection, window management, and source switching
- Supports familiar operational gestures, including drag and drop, swipe, and tap
- Control videowalls from up to 10 devices simultaneously
- Requires videowall processor with LinkLicense® for EMS-Quantum Ultra



Preset Selection



Preset editing with Source Selection Sidebar

Extron
Quantum
Ultra
CERTIFIED



Quantum Ultra Certified

Certification Program for Professional Videowall Displays

We are pleased to announce that industry-leading display manufacturers have teamed with Extron to guarantee compatibility between their display devices and the Quantum Ultra 4K Videowall Processor. Extron has worked closely with these manufacturers to validate consistent, stable presentation of source content. Display devices that pass the extensive testing program are identified as Quantum Ultra certified.

Output rotation, output overlap, bezel compensation, and custom output resolution support make Quantum Ultra the perfect companion for a diverse array of display technologies. By pairing a Quantum Ultra processor with a Quantum Ultra certified display device, compatibility concerns are eliminated from the product specification process. System designers can take comfort knowing that the products have been tested together using established parameters, such as image stability, image acquisition, and EDID management. This ensures consistent and reliable operation between processor and displays, streamlining videowall integration and reducing the need for on-site troubleshooting.

Quantum Ultra Certification Benefits

- Collaboration between Extron and display manufacturers guarantees compatibility with Quantum Ultra
- Ensures consistent and reliable operation between processor and displays
- Simplifies system design by offering a selection of devices certified to work together
- Extensive testing validates signal stability and EDID communication
- Streamlines system integration by reducing need for on-site troubleshooting

Certified Displays:

Daktronics:

- NPN-4100 LED Display and DI-6000 Display Interface

NEC:

- Multisync® UNxx2xx Video Wall Displays

Planar:

- Clarity® Matrix® G3 MX55X Video Wall System
- Planar® DirectLight® X 1.2mm LED Video Wall System

To learn more, visit extron.com/QUCertified

XTP WindoWall



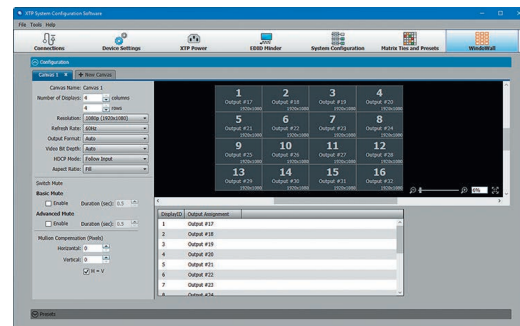
XTP
SYSTEMS

XTP Systems Deliver Powerful Capabilities for Videowall Applications

We are pleased to introduce XTP WindoWall®, an exciting enhancement that brings videowall capabilities to XTP Systems®. Utilizing XTP® scaling receivers, XTP WindoWall enables a mix of full screen and image magnification across multiple displays. Up to eight videowalls can be supported within an XTP system, and up to eight assignable presets are available per wall for quick and easy viewing between different image arrangements. Convenient software features such as drag and size layout configuration, mullion compensation, and the ability to create multiple presets expedite the setup process.

Features:

- Expands XTP Systems applications to include videowall environments
- Supports any aspect ratio configuration up to 8x8
- Enables a mix of full screen and image magnification across multiple displays
- XTP System Configuration Software streamlines videowall set up, saving time and money
- Presets offer quick and easy selection between layouts
- Mullion compensation for flat panel displays



XTP System Configuration Software Offers Quick and Easy Setup

NOW SHIPPING

| Model | Version Description | Part Number |
|------------------|---|-------------|
| XTP SR HD 4K | HDMI Scaling Receiver..... | 60-1524-01 |
| XTP SFR HD 4K MM | HDMI Scaling Receiver - Multimode..... | 60-1278-21 |
| XTP SFR HD 4K SM | HDMI Scaling Receiver - Singlemode..... | 60-1278-22 |

To learn more, visit extron.com/XTPWindowWall

XTP SYSTEMS

XTP CP 4i 12G-SDI Board

12G-SDI Input Board with SDI and HDMI Input Loop-Through

The Extron XTP CP 4i 12G-SDI Input Board enables 12G-SDI connectivity within XTP Systems®. It supports 12G-SDI, 6G-SDI, 3G-SDI, and HD-SDI video signal data rates up to 11.88 Gbps, and passes HDR, embedded audio, along with other ancillary data allowed by the SMPTE and ITU specifications. Incoming signals are automatically equalized to provide optimal signal quality for long cable runs. Buffered SDI and HDMI loop-through connections deliver added convenience, accommodating local displays. For flexible audio management and breakaway audio routing, the input board facilitates two-channel AES audio extraction.

FEATURES

- Supports 12G-SDI, 6G-SDI, 3G-SDI, and HD-SDI signals
- Automatically adapts to SMPTE and ITU digital video standards
- Supports data rates from 1.49 Gbps to 11.88 Gbps
- Buffered SDI and HDMI input loop-throughs
- Support for HDR - High Dynamic Range video
- Automatic input cable equalization
- Automatic output reclocking
- Passes ancillary data including HDR, embedded audio, closed caption, and timecode
- Immunity to pathological signal patterns
- Embedded AES audio support
- SD Pro processing provides deinterlacing of standard definition video
- Compatible with all XTP CrossPoint matrix switcher models



XTP
SYSTEMS

4K UHD

| Model | Version Description | Part Number |
|-------------------|---|-------------|
| XTP CP 4i 12G-SDI | Four Input Board, 12G-SDI w/ SDI and HDMI Outputs.... | 70-1171-01 |

XTP II CP 4i HD DMA 4K PLUS

4K/60 HDMI Input Board with Downmixing Audio

The XTP II CP 4i HD DMA 4K PLUS input board provides local HDMI connectivity and facilitates multi-channel audio downmixing. It is HDMI 2.0b and HDCP 2.3-compliant and supports computer and video resolutions up to 4K/60 at 4:4:4 color sampling. It also supports separate analog stereo audio signals, which are converted to two-channel PCM digital audio for independent routing within the system. To simplify integration, stereo audio can be embedded into the XTP® signal stream for distribution alongside video signals. The XTP II CP 4i HD DMA 4K PLUS input board enables enhanced audio capabilities within XTP Systems®.

FEATURES

- Four HDMI inputs with stereo audio and multi-channel audio downmixing
- Supports computer and video resolutions up to 4K/60 @ 4:4:4
- HDCP 2.3 compliant
- Support for HDR - High Dynamic Range video
- Audio breakaway enables independent audio and video switching
- Multi-channel to two-channel audio downmixing provides enhanced audio capabilities
- Supported HDMI 2.0b specification features include data rates up to 18 Gbps, HDR, Deep Color up to 12-bit, 3D, and HD lossless audio formats
- Comprehensive EDID management
- Compatible with all XTP CrossPoint matrix switcher models



XTP
SYSTEMS

18 Gbps
4K/60 4:4:4

NOW SHIPPING

| Model | Version Description | Part Number |
|-----------------------------|---|-------------|
| XTP II CP 4i HD DMA 4K PLUS | Four Input Board, 4K/60 HDMI - Downmixing Audio | 70-1112-02 |

For updated product availability, go to www.extron.com

Europe
+31.33.453.4040 / +800.3987.6673
+31.33.453.4050 FAX

Middle East
+971.4.299.1800
+971.4.299.1880 FAX

Asia
+65.6383.4400 / +800.7339.8766
+65.6383.4664 FAX

China
+86.21.3760.1568 / +4000.398766
+86.21.3760.1566 FAX

Japan
+81.3.3511.7655
+81.3.3511.7656 FAX

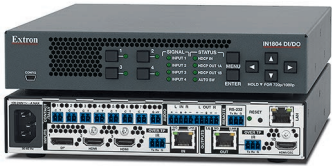
Extron

SCALERS

IN1804 DI/DO
Four Input 4K/60 Seamless Scaling Switcher

The Extron IN1804 DI/DO is a compact four input scaler that supports video resolutions up to 4K/60 at 4:4:4. It incorporates Extron-patented Vector 4K scaling technology specifically engineered for critical 4K signal processing applications. It features DisplayPort and HDMI inputs along with Extron DTP2 extension of 4K/60 video, audio, and control signals up to 330 feet (100 meters) over a shielded CATx cable. The IN1804 DI/DO delivers the convenience of fast and reliable automatic switching, along with advanced capabilities such as audio embedding/de-embedding, seamless transition effects, and logo keying. Designed for professional AV integration, the IN1804 DI/DO can be controlled and configured using Ethernet, RS-232, USB, and contact closure with tally outputs.

- FEATURES**
- Integrates DisplayPort, HDMI, and audio sources into presentation systems
 - Integrated DTP2 input and output support transmission of 4K/60 video, audio, and control up to 330 feet (100 meters) over a shielded CATx cable
 - Advanced Extron Vector™ 4K scaling engine
 - Supports signal resolutions up to 4K/60 with 4:4:4 color sampling
 - Supported HDMI 2.0 specification features include data rates up to 18 Gbps, Deep Color, and HD lossless audio formats
 - Logo image keying and display
 - Selectable seamless switching transitions
 - Auto-switching between inputs
 - HDCP 2.3 compliant



DTP
SYSTEMS

18 Gbps
4K/60 4:4:4

VECTOR 4K
SCALING

NOW SHIPPING

| Model | Version Description | Part Number |
|--------------|-----------------------------------|-------------|
| IN1804 DI/DO | Four Input 4K/60 Scaler, DTP2 I/O | 60-1699-14 |

DTP SYSTEMS

DTP2 T 204
Four Input 4K/60 HDMI Switcher with Integrated DTP2 Transmitter

The Extron DTP2 T 204 is a four-input switcher for sending HDMI and control up to 330 feet (100 meters) over a shielded CATx cable to an Extron DTP-enabled product. It provides four HDMI inputs and a DTP2 output. The DTP2 T 204 supports video signals at resolutions up to 4K/60 at 4:4:4 chroma sampling and complies with HDCP 2.3. Ethernet remote control and contact/tally connections facilitate integration in professional environments. Integrator-friendly features include EDID Minder®, auto-switching between inputs, and bidirectional RS-232 and IR pass-through for remote AV device control. The half-rack enclosure enables discreet placement within lecterns, beneath tables, or wherever needed to meet application requirements.

- FEATURES**
- Transmits HDMI and control up to 330 feet (100 meters) over a shielded CATx cable
 - Supports computer and video resolutions up to 4K/60 @ 4:4:4
 - Auto-switching between inputs
 - Supported HDMI 2.0b specification features include data rates up to 18 Gbps, HDR, Deep Color up to 12-bit, 3D, and HD lossless audio formats
 - Ethernet monitoring and control
 - DTP2 output is compatible with HDBaseT-enabled devices



DTP
SYSTEMS

18 Gbps
4K/60 4:4:4

| Model | Version Description | Part Number |
|------------|--|-------------|
| DTP2 T 204 | 4K/60 HDMI Switcher with DTP2 Tx - 330 feet (100m) | 60-1626-52 |

DTP2 CrossPoint 82



DTP
SYSTEMS

18 Gbps
4K/60 4:4:4

VECTOR 4K
SCALING

The Industry's Most Advanced 4K/60 Matrix Switcher

The Extron DTP2 CrossPoint 82 is an 8x2 matrix switcher that supports signal resolutions up to 4K/60 at 4:4:4 for all inputs and outputs. It features DisplayPort and HDMI inputs, an HDMI output, and Extron DTP2 extension to send 4K/60 video, audio, and control signals up to 330 feet (100 meters) over a shielded CATx cable. The DTP2 matrix output is powered by Extron Vector™ 4K scaling technology, capable of seamless switching, logo keying, and scaled resolutions up to 4K/60. A built-in Extron IP Link® Pro control processor and integrated 100-watt Class D power amplifier make the DTP2 CrossPoint 82 an all-in-one system design solution. It delivers excellent image quality, fast and reliable switching, along with Extron ProDSP audio processing and an HDMI loop-through.

Features:

- All-in-one 8x2 matrix switcher, scaler, audio DSP, audio power amplifier, and control processor
- DTP2, DisplayPort, and HDMI inputs
- One scaled DTP2 output and one HDMI output
- Advanced Extron Vector™ 4K scaling engine
- Supports signal resolutions up to 4K/60 with 4:4:4 color sampling
- HDCP 2.3 compliant
- Ethernet insertion of control signals at the matrix provides centralized communication to remote endpoints
- Powerful integrated ProDSP™ 64-bit audio signal processing
- Available with energy efficient Class D stereo or mono amplifier:
 - 2 x 50 watts @ 4 ohms; 2 x 25 watts @ 8 ohms
 - 1 x 100 watts @ 70 volts
- Available with integrated IPCP Pro 355M control processor

NOW SHIPPING

| Model | Version Description | Part Number |
|-------------------------------|---|-------------|
| DTP2 CrossPoint 82 | Standard Model..... | 60-1812-01 |
| DTP2 CrossPoint 82 IPCP SA | Control Processor and Stereo Amp..... | 60-1812-02 |
| DTP2 CrossPoint 82 IPCP SA | Control Processor and Stereo Amp, LL UI Upgrade | 60-1812-02A |
| DTP2 CrossPoint 82 IPCP MA 70 | Control Processor and Mono Amp..... | 60-1812-03 |
| DTP2 CrossPoint 82 IPCP MA 70 | Control Processor and Mono Amp, LL UI Upgrade | 60-1812-03A |

To learn more, visit extron.com/DTP2CP

DXP HD 4K PLUS Series



18 Gbps
4K/60 4:4:4

Full-Featured 4K/60 HDMI Matrix Switchers with Industry-Leading Performance

We are pleased to add new 4x2, 16x8, and 16x16 models to the DXP HD 4K PLUS Series of high-performance HDMI matrix switchers that can handle video resolutions up to 4K/60 4:4:4. These new models complement the current 4x4, 8x4, and 8x8 models, featuring the same performance and capabilities to accommodate any installation. Each matrix switcher provides audio de-embedding for easy integration into a wide variety of professional AV applications. To maintain signal integrity and reliability, the DXP HD 4K PLUS Series matrix switchers include automatic cable equalization on all inputs and output reclocking to reshape and restore video signal timing at each HDMI output. Available in fixed configurations from 4x2 to 16x16, the DXP HD 4K PLUS Series is ideal for applications that require reliable, high-performance matrix switching of 4K/60 HDMI video and audio signals.

Features:

- Supports computer and video resolutions up to 4K/60 @ 4:4:4
- Supported HDMI 2.0b specification features include data rates up to 18 Gbps, HDR, Deep Color up to 12-bit, 3D, HD lossless audio formats, and CEC
- HDMI audio de-embedding with digital S/PDIF and analog stereo audio outputs
- CEC – Consumer Electronics Control capability
- Output volume control
- EDID Minder® automatically manages EDID communication between connected devices
- Support for HDR – High Dynamic Range video
- HDCP 2.3 compliant
- Automatic input cable equalization and output reclocking

NOW SHIPPING

| Model | Version Description | Part Number |
|--------------------------------|---------------------------------------|-------------|
| DXP 42 HD 4K PLUS NEW | 4x2 4K/60 HDMI with 2 Audio Outputs | 60-1678-01 |
| DXP 44 HD 4K PLUS | 4x4 4K/60 HDMI with 2 Audio Outputs | 60-1493-21 |
| DXP 84 HD 4K PLUS | 8x4 4K/60 HDMI with 2 Audio Outputs | 60-1494-21 |
| DXP 88 HD 4K PLUS | 8x8 4K/60 HDMI with 2 Audio Outputs | 60-1495-21 |
| DXP 168 HD 4K PLUS NEW | 16x8 4K/60 HDMI with 4 Audio Outputs | 60-1496-21 |
| DXP 1616 HD 4K PLUS NEW | 16x16 4K/60 HDMI with 4 Audio Outputs | 60-1497-21 |

To learn more, visit extron.com/DXP4KPLUS

SSP 200

The Compact Surround Sound Processor

Designed for Pro AV



The Extron SSP 200 is a high-performance Surround Sound Processor designed for pro AV applications in corporate and commercial environments. Providing up to ten built in outputs, or up to 14 outputs via the EXP port, the SSP 200 provides the flexibility needed for multimedia system requirements, including support for the latest immersive formats of Dolby Atmos and DTS:X. An upmix function synthesizes exceptional multichannel audio from stereo content. Designed specifically for Pro AV applications, the SSP 200 is the ideal processor to create enhanced, immersive experiences in upscale presentation environments.

Features:

- Supports the latest immersive and lossless audio formats as well as legacy surround formats
- Automatic format detection and decoding
- Supported HDMI 2.0b specification features include data rates up to 18 Gbps, resolutions up to 4K/60 at 4:4:4, HDR, Deep Color up to 12-bit, and HD lossless audio formats
- Multiple inputs with auto switching: HDMI, coaxial, optical and analog
- PCS software provides flexible, intuitive control for all processor settings

Unique Pro AV Integration Features:

- Compact 1U, half-rack width processor
- Flexible control capability via RS-232 or LAN
- Balanced audio outputs
- DMP EXP expansion port provides easy I/O connection to an Extron DMP Plus Series audio DSP processor. This allows for a higher output count and seamless integration with all DMP capabilities including Dante transport.
- Integrated test signals for calibration and connectivity validation during setup

Model

SSP 200

Version Description

Surround Sound Processor.....

Part Number

60-1658-01

To learn more, visit extron.com/ssp200

XPA ULTRA

POWER AMPLIFIERS

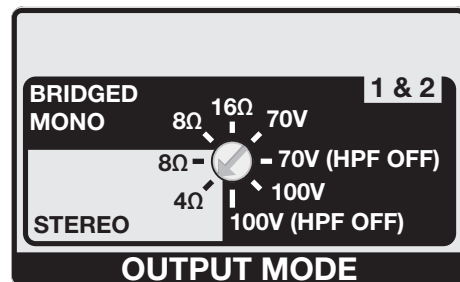


XPA Ultra SB Power Amplifiers

Switchable Bridging Flexibility for Countless Applications

The new Extron XPA Ultra SB amplifiers are engineered with flexible switchable bridging output technology that can deliver 100 watts to 400 watts per channel into 8 ohm, 4 ohm, 70 volt, or 100 volt loads. When a channel pair is set to mono bridged mode, output power is doubled while retaining the ability to drive a low or high impedance system. A rotary switch on the rear panel of the amplifier makes it quick and easy to select the correct output mode for the speaker type. XPA Ultra SB amplifiers provide the flexibility, proven Everlast™ reliability, and industry leading performance to meet the needs of even the most demanding applications.

- 100 watts to 400 watts per channel into 8 ohm, 4 ohm, 70 volt, or 100 volt loads
- ENERGY STAR qualified
- All rated watts usable - all channels driven
- Defeatable auto standby with ultra-fast wake up
- Remote volume / mute control with Extron VCM, VC, and select MediaLink controllers
- UL 2043 plenum rated when used with optional Flexible Conduit Adapter Kit
- Professional grade signal-to-noise and THD+N performance



Simple and reliable output mode selector reduces setup errors

To learn more, visit extron.com/xpau

AUDIO PRODUCTS

XPA U 1004 SB**Four Channel Bridgeable Output Amplifier 100/200 Watts Per Channel**

The Extron XPA U 1004 SB is an ENERGY STAR qualified four channel audio power amplifier with flexible channel pairs that can drive 8 ohm, 4 ohm, 70 volt, or 100 volt loads. The individually bridgeable pairs can deliver two 100 watt channels into low impedance systems or one 200 watt channel into low or high impedance systems. A rotary switch on the rear panel makes it quick and easy to select output mode. The convection cooled, plenum rated enclosure of the XPA U 1004 SB does not require empty rack spaces for ventilation and includes rack mount hardware. It features a highly efficient advanced Class D amplifier design with defeatable auto standby, fast wake up from standby, and our patented CDRS - Class D Ripple Suppression. XPA Ultra SB models also offer remote volume and mute control with Extron VCM, VC or select MediaLink controllers.

FEATURES

- **NEW** Selectable output modes per channel pair:
 - Two 100 watt channels into 8 ohms or 4 ohms
 - One 200 watt bridged channel into 70V or 100V, with or without HPF
 - One 200 watt bridged channel into 8 ohms or 16 ohms
- ENERGY STAR® qualified amplifier
- Extron Patented CDRS™ - Class D Ripple Suppression
- Convection cooled, fanless operation - can be stacked without extra rack space for ventilation
- Defeatable auto-standby with fast wake up
- UL 2043 plenum rated when used with optional Flexible Conduit Adapter Kit

**NOW SHIPPING**

| Model | Version Description | Part Number |
|---------------|---|-------------|
| XPA U 1004 SB | Four Channel Bridgeable Output Amp, 100/200 Watts | 60-1301-01 |

XPA U 2002 SB**Two Channel Bridgeable Output Amplifier 200/400 Watts Per Channel**

The Extron XPA U 2002 SB is an ENERGY STAR qualified two channel audio power amplifier with a flexible output that can drive 8 ohm, 4 ohm, 70 volt, or 100 volt loads. The bridgeable channels can deliver two 200 watt channels into low impedance systems or a mono 400 watt channel into low or high impedance systems. A rotary switch on the rear panel makes it quick and easy to select output mode. The convection cooled, plenum rated enclosure of the XPA U 2002 SB does not require empty rack spaces for ventilation and includes rack mount hardware. It features a highly efficient advanced Class D amplifier design with defeatable auto standby, fast wake up from standby, and our patented CDRS - Class D Ripple Suppression. XPA Ultra SB models also offer remote volume and mute control with Extron VCM, VC or select MediaLink controllers.

FEATURES

- **NEW** Selectable output modes:
 - Two 200 watt channels into 8 ohms or 4 ohms
 - One 400 watt bridged channel into 70V or 100V, with or without HPF
 - One 400 watt bridged channel into 8 ohms or 16 ohms
- ENERGY STAR® qualified amplifier
- Extron Patented CDRS™ - Class D Ripple Suppression
- Convection cooled, fanless operation - can be stacked without extra rack space for ventilation
- Defeatable auto-standby with fast wake up
- UL 2043 plenum rated when used with optional Flexible Conduit Adapter Kit

**NOW SHIPPING**

| Model | Version Description | Part Number |
|---------------|--|-------------|
| XPA U 2002 SB | Two Channel Bridgeable Output Amp, 200/400 Watts | 60-1758-01 |

For updated product availability, go to www.extron.com

Europe
+31.33.453.4040 / +800.3987.6673
+31.33.453.4050 FAX

Middle East
+971.4.299.1800
+971.4.299.1880 FAX

Asia
+65.6383.4400 / +800.7339.8766
+65.6383.4664 FAX

China
+86.21.3760.1568 / +4000.398766
+86.21.3760.1566 FAX

Japan
+81.3.3511.7655
+81.3.3511.7656 FAX

NetPA ULTRA

POWER AMPLIFIERS



Industry-Leading Amplifiers Now with Dante

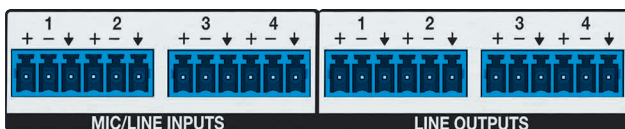
With the NetPA® Ultra amplifiers, you get all the advantages of our award winning XPA Ultra amplifiers combined with the power of Dante network audio distribution. Dante connectivity makes it easy to distribute audio from a centralized location to decentralized remote amplifiers throughout a facility, building, or campus using standard network hardware. These ENERGY STAR qualified amplifiers also offer integrated DSP, allowing a single device to function as a complete audio system endpoint. NetPA Ultra power amplifiers provide system scalability, easier installation, and simplified wiring, while meeting the stringent quality requirements of professional audio installations.

Dante Connectivity

The NetPA Ultra models deliver Dante networked audio to local sound reinforcement systems. They enable decentralized and reliable distribution of Dante audio to multiple speaker zones throughout a facility or building, and are the ideal choice for audio amplification in Dante systems. Offering AES67 for Audio over IP Interoperability and Dante Domain Manager enterprise level network management, the NetPA Ultra power amplifiers can connect to a variety of other devices and network infrastructure.

Analog Inputs & Outputs

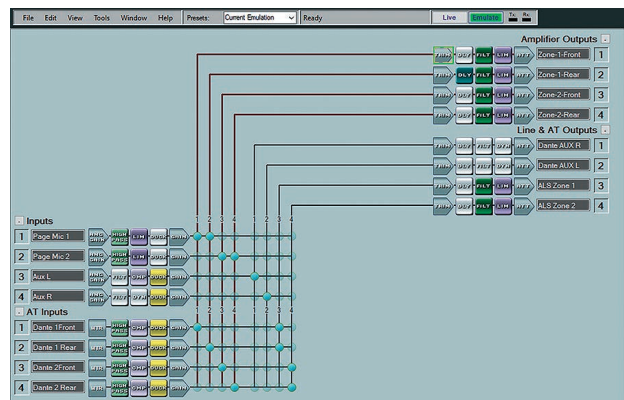
The analog line outputs allow for connection of additional amplifiers, simplifying connection to the source while processing flexibility. The mic/line inputs can be routed to the amplifier or to the Dante network for additional flexibility.



NetPA U 1004 Rear Panel

Mix Matrix with DSP

A built in matrix allows any analog or Dante input to be mixed to any amplifier output, Dante output or analog line output. Included in the mix matrix is essential processing such as gain adjustments, filters, dynamics, and delay. This offers the possibility to create simplified complete systems that include source ducking and routing, without a separate audio processor.



Extron DSP Configurator Software

To learn more, visit extron.com/netpaultra

AUDIO PRODUCTS

NetPA U 1004**Four Channel Power Amplifiers with Dante and DSP
100 Watts Per Channel**

The Extron NetPA U 1004 is a Dante-enabled, ENERGY STAR qualified power amplifier that delivers four 100 watt channels in a half rack, 1U, plenum rated enclosure. With its integrated DSP, the NetPA U 1004 includes essential signal processing that offers the ability to meet the requirements of complex, decentralized systems while Dante Domain Manager and AES67 support ensure wide compatibility with enterprise configurations and other network audio devices. Exceptional thermal design provides the ability to install units without using rack spaces for ventilation, conserving precious rack space. The NetPA U 1004 is a highly efficient advanced Class D amplifier that features defeatable auto-standby with fast wake up and our patented CDRS - Class D Ripple Suppression.

FEATURES

- **NEW** Receives audio from the Dante audio network and from analog mic/line level inputs
- 100 watts rms output power per channel at 8 ohms, 4 ohms, or 70/100V
- ENERGY STAR qualified amplifier
- Single and dual rack mount hardware included
- **NEW** New Integrated DSP
- Convection cooled, fanless operation - can be stacked without extra rack space for ventilation
- Defeatable auto-standby and fast wake up
- Extron Patented CDRS™ - Class D Ripple Suppression
- Professional grade signal-to-noise and THD+N performance
- Ultra low inrush current at power up - no need for power sequencing

| Model | Version Description | Part Number |
|--------------------------|--|-------------|
| NetPA U 1004 | Four Channel Dante Amp, 100 watts at 8 or 4 ohms | 60-1766-01 |
| NetPA U 1004-70V | Four Channel Dante Amp, 100 watts at 70 volts | 60-1766-02 |
| NetPA U 1004-100V | Four Channel Dante Amp, 100 watts at 100 volts | 60-1766-12 |

NetPA U 1002**Two Channel Power Amplifiers with Dante and DSP
100 Watts Per Channel**

The Extron NetPA U 1002 is a Dante-enabled, ENERGY STAR qualified power amplifier that delivers two 100 watt channels in a half rack, 1U, plenum rated enclosure. With its integrated DSP, the NetPA U 1002 includes essential signal processing that offers the ability to meet the requirements of complex, decentralized systems while Dante Domain Manager and AES67 support ensure wide compatibility with enterprise configurations and other network audio devices. Exceptional thermal design provides the ability to install units without using rack spaces for ventilation, conserving precious rack space. The NetPA U 1002 is a highly efficient advanced Class D amplifier that features defeatable auto-standby with fast wake up and our patented CDRS - Class D Ripple Suppression.

FEATURES

- **NEW** Receives audio from the Dante audio network and from analog mic/line level inputs
- 100 watts rms output power per channel at 8 ohms, 4 ohms, or 70/100V
- ENERGY STAR qualified amplifier
- Single and dual rack mount hardware included
- **NEW** New Integrated DSP
- Convection cooled, fanless operation - can be stacked without extra rack space for ventilation
- Defeatable auto-standby and fast wake up
- Extron Patented CDRS™ - Class D Ripple Suppression
- Professional grade signal-to-noise and THD+N performance
- Ultra low inrush current at power up - no need for power sequencing

| Model | Version Description | Part Number |
|--------------------------|---|-------------|
| NetPA U 1002 | Two Channel Dante Amp, 100 watts at 8 or 4 ohms | 60-1767-01 |
| NetPA U 1002-70V | Two Channel Dante Amp, 100 watts at 70 volts | 60-1767-02 |
| NetPA U 1002-100V | Two Channel Dante Amp, 100 watts at 100 volts | 60-1767-12 |



NetPA U 1004

**NOW SHIPPING**

NetPA U 1002

For updated product availability, go to www.extron.com

Europe
+31.33.453.4040 / +800.3987.6673
+31.33.453.4050 FAX

Middle East
+971.4.299.1800
+971.4.299.1880 FAX

Asia
+65.6383.4400 / +800.7339.8766
+65.6383.4664 FAX

China
+86.21.3760.1568 / +4000.398766
+86.21.3760.1566 FAX

Japan
+81.3.3511.7655
+81.3.3511.7656 FAX

Extron

AUDIO PRODUCTS

SF 26CT LP
SoundField XD 6.5" Two-Way Ceiling Speaker
with Low Profile Back Can

The Extron SoundField® XD model SF 26CT LP is a low profile 6.5" two-way ceiling speaker featuring a 4.2" (107 mm) deep composite back can for use in restricted height plenum environments. The driver complement includes a 6.5" (165 mm) woofer coupled to a 3/4" (19 mm) ferrofluid-cooled dome tweeter. The SF 26CT offers both direct 8 ohm and 70/100 volt operation with a behind-the-grille, six position power selector switch. With high impedance taps at 8, 16, 32, and 64 watts, the SF 26CT is ideal for applications that require a high power distributed speaker system in plenum spaces that will not accommodate a taller back can.

- FEATURES**
- 6.5" (165 mm) long throw woofer
 - 3/4" (19 mm) ferrofluid-cooled dome tweeter
 - **NEW** 4.2" (107 mm) deep low profile composite back can
 - Frequency range: 85 Hz to 22 kHz
 - 111° conical dispersion
 - 65 watts continuous pink noise
 - 130 watts continuous program
 - Locking arms support ceilings up to 2.25" (57.1 mm) thick
 - UL 2043 plenum rated enclosure



| Model | Version Description | Part Number |
|------------|--|-------------|
| SF 26CT LP | 6.5" LowProfile 2-Way Ceiling Spkrs, Complete Pair | 60-1881-03 |

XMP 240
Dante Expansion DSP Matrix Processor

The XMP 240 Dante Expansion DSP Matrix Processor features an extensive mix matrix with 24 channels of AEC and 48x48 Dante connectivity in only a half rack space. The XMP 240 can also be used standalone for matrix processing in an all network audio system. When connected to a DMP Plus Series processor via Dante or the EXP expansion port, a complete system is created that features up to 36 channels of AEC, a USB audio interface, analog connectivity, and optional VoIP. A system expanded with an XMP 240 is capable of supporting multiple beam forming microphone arrays alongside numerous other Dante sources, with enough outputs to support multiple zones and destination devices. Ideal for network audio systems based on Dante or AES67, the XMP 240 allows for high channel count audio input and output processing.

- FEATURES**
- 24 channels of AEC - acoustic echo cancellation
 - Dante audio networking with Dante Domain Manager and AES67 support
 - Extensive mix matrix with input and output processing
 - FlexInput capability on all inputs for input source selection
 - Macros allow the sequencing of commands that can be sent to the local device or external devices via Dante or the LAN port
 - Compact half rack size



NOW SHIPPING

| Model | Version Description | Part Number |
|--------------|--|-------------|
| XMP 240 C AT | Expansion Matrix Processor w/ 24 AEC and Dante | 60-1836-01 |

AUDIO ACCESSORIES

HAE 100 4K Plus**4K/60 HDMI Audio De-Embedder**

The Extron HAE 100 4K Plus is a high performance 4K/60 audio de-embedder that extracts the audio from an HDMI signal. The HAE 100 4K Plus provides an analog output for stereo or dual mono signals, as well as an S/PDIF digital audio output that supports two-channel or Dolby® and DTS® multi-channel formats. It is HDCP compliant, supporting data rates up to 18 Gbps, HDR, 12-bit Deep Color, 3D, and lossless audio formats. The HAE 100 4K Plus is equipped with integrator-friendly features such as a buffered HDMI video output with EDID Minder®, HDMI input cable equalization, and comprehensive LED status display.

FEATURES

- De-embeds two-channel analog and S/PDIF digital audio from an HDMI signal
- **NEW** Supports 4K/60 @ 4:4:4
- **NEW** Supported HDMI 2.0b specification features include data rates up to 18 Gbps, HDR, Deep Color up to 12-bit, 3D, and HD lossless audio formats.
- HDCP compliant with user-selectable authorization
- EDID Minder® automatically manages EDID communication between connected devices
- Selectable output format



18 Gbps
4K/60 4:4:4

NOW SHIPPING

| Model | Version Description | Part Number |
|-----------------|------------------------------------|-------------|
| HAE 100 4K Plus | 4K/60 HDMI Audio De-Embedder | 60-1681-01 |

HAI 100 4K Plus**4K/60 HDMI Audio Embedder**

The Extron HAI 100 4K Plus is a high performance 4K/60 audio embedder that embeds either two-channel analog audio, or S/PDIF digital audio in two-channel or multi-channel formats onto the HDMI output signal. The HAI 100 4K Plus includes an HDMI input, analog stereo audio, and S/PDIF audio inputs that support two-channel or Dolby® and DTS® multi-channel formats, as well as an HDMI output. It is HDCP compliant, supporting data rates up to 18 Gbps, HDR, 12-bit Deep Color, 3D, and lossless audio formats. The HAI 100 4K Plus includes integrator-friendly features such as adjustable gain control for the analog audio input, EDID Minder®, HDMI input cable equalization, and comprehensive LED status display.

FEATURES

- Embeds two-channel analog or S/PDIF digital audio onto an HDMI signal
- Supports two-channel stereo analog audio, or two-channel or multi-channel S/PDIF digital audio
- **NEW** Supports 4K/60 @ 4:4:4
- **NEW** Supported HDMI 2.0b specification features include data rates up to 18 Gbps, HDR, Deep Color up to 12-bit, 3D, and HD lossless audio formats.
- HDCP compliant with user-selectable authorization
- EDID Minder® automatically manages EDID communication between connected devices



18 Gbps
4K/60 4:4:4

| Model | Version Description | Part Number |
|-----------------|---------------------------------|-------------|
| HAI 100 4K Plus | 4K/60 HDMI Audio Embedder | 60-1682-01 |

For updated product availability, go to www.extron.com

Europe
+31.33.453.4040 / +800.3987.6673
+31.33.453.4050 FAX

Middle East
+971.4.299.1800
+971.4.299.1880 FAX

Asia
+65.6383.4400 / +800.7339.8766
+65.6383.4664 FAX

China
+86.21.3760.1568 / +4000.398766
+86.21.3760.1566 FAX

Japan
+81.3.3511.7655
+81.3.3511.7656 FAX

Extron

ARCHITECTURAL CONNECTIVITY

Cable Cubby Drawer
Under-Table Cable Access Drawer for AV Connectivity and Power

The Extron Cable Cubby® Drawer is a modular cable access drawer for AV connectivity and USB power beneath tables, desks, or other furniture. When open, its flexible design facilitates easy access to connected cables, as well as stored items such as display remotes, a mouse, keyboard, or a mobile device such as a tablet. The smooth-gliding drawer features AV connectivity openings at the rear of the compartment that accommodate up to six single-space AAP™ AV Connectivity Modules. An integrated track system simplifies cable routing and prevents binding and tangling of cables. A cable pass-through opening allows cables to remain connected, even when the drawer is closed. The Cable Cubby Drawer is available with a black finish, and the drawer front can be customized using an integrator-provided veneer or façade.

- FEATURES
- Accommodates up to six, single-space AAP™ AV Connectivity Modules:
- CCD 220 holds four single-space or two double-space AAP modules
- CCD 320 holds six single-space or three double-space AAP modules
 - Mounts directly beneath the furniture surface
 - Integrated track simplifies cable routing to prevent binding and tangling
 - Custom façade can be attached by the integrator to the front of the drawer to match the furniture finish
 - Friction catch secures drawer in open and closed positions
 - Optional USB PowerPlate module provides USB power for mobile devices and laptops

Table with 3 columns: Model, Version Description, Part Number. Rows include CCD 220 and CCD 320.



CCD 220 shown with optional items and connector plates



Detail of CCD 220 Modular Connector Panel



CCD 320 shown with optional items and connector plates

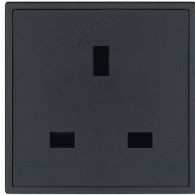
NOW SHIPPING

Flex55 AC 101 SW and Flex55 AC 101 UK
Swiss and UK Power Connectivity for Extron's Elegant Flex55 Mounting Solution

The Flex55 AC 101 SW and Flex55 AC 101 UK are power modules for Flex55™ mounting solutions designed for use in Switzerland and the UK. They feature one unswitched AC power outlet for charging mobile devices such as smartphones, tablets, and laptops. The Flex55 AC 101 SW and Flex55 AC 101 UK modules come equipped with an attached 28 cm IEC pigtail. These power modules are CE compliant.

- FEATURES
- Designed for use with Extron's elegant Flex55™ frames and enclosures
 - AC power modules offer one unswitched AC power outlet per module
 - AC power modules include an attached 11" (0.28 m) IEC pigtail
 - All Flex55 100 Series power modules are CE compliant when installed
 - Available in a black finish

Table with 3 columns: Model, Version Description, Part Number. Rows include Flex55 AC 101 UK and Flex55 AC 101 SW.



Flex55 AC 101 UK



Flex55 AC 101 SW

NOW SHIPPING



Our New Surface-Matching Cable Cubby

We are pleased to introduce the Cable Cubby 1252 MS, an elegant, surface-matching cable access enclosure for AV connectivity, control, and power. When the Cable Cubby® lid is closed, it blends into the table surface and is virtually invisible. This makes it an ideal solution for conference tables, lecterns, and other presentation furniture in high-end environments. The lid of the Cable Cubby enclosure serves as a mounting base for various thicknesses of wood, stone, or other finishing material. After precision cutting of the surface opening, the removed material can be attached to the lid. The unique lid and height-adjustable design let the enclosure sit completely flush with the surface. A cable pass-through slot allows cables to remain connected, even when the lid is closed.

Features:

- Unique design virtually disappears into furniture surface
- Integrated lid serves as a mounting base for wood, stone, or other surface-matching material
- Bezel-free, height-adjustable enclosure accommodates any furniture thickness for a flush installation
- Optional Cable Cubby 1252 MS Lid Tray Kit surrounds the cut material for a clean and professional finish
- Allows cable pass-through when lid is closed
- Compatible with ZipClip 100, ZipClip 200, or PMK 155 mounting kits for securing an external power supply or up to half-rack width products directly to the enclosure beneath the surface
- Accommodates AC or AC+USB Power Module, plus up to three Retractor modules, eight AV cables, and/or three AAP™ AV Connectivity Modules
- AC Power and AC+USB power modules are available for US, Europe, and other major world markets
- Compatible with Extron Teamwork® Show Me® Cables that provide the easiest way to present, at the push of a button
- Includes mounting brackets for AAP, Cable Pass-through, and Retractor modules
- The Cable Cubby 1252 MS requires precision surface cutting and professional carpentry skills for proper integration

NOW SHIPPING

| Model | Version Description | Part Number |
|----------------------------------|--|-------------|
| Cable Cubby 1252 MS | Matching Surface Enclosure; Black- AC Not Included | 70-1273-01 |
| Cable Cubby 1252 MS Lid Tray Kit | For Cable Cubby 1252 MS; Black Anodized Aluminum | 70-1275-01 |

To learn more, visit extron.com/CC1252MS

ARCHITECTURAL CONNECTIVITY

SMB 110 Series

White Surface Mount Boxes for US-Gang Products

The Extron SMB 110 Series Surface Mount Boxes are designed for the external mounting of US-gang Extron architectural products, including MediaLink® Plus controllers with AAP™ AV Connectivity Module openings, WPD decorator-style wallplates with Pass-through connectors, and other Extron US-gang decorator-style wallplates and AAP modules. SMB 110 Series Surface Mount Boxes feature an elegant, contoured design that complements any environment, and can be surface mounted on lecterns, tabletops, and other flat surfaces for convenient access to connectors and controls. The optional SMB Table Clamp Kit secures SMB 110 boxes to table edges without marring the surface.

FEATURES

- Accepts standard US-gang size Extron architectural products
- Contoured design complements any environment
- Suitable for tabletop and lectern applications
- Available in a one- to five-gang size
- Optional Table Clamp Kit secures the box without damaging the surface; part # 70-1160-13
- Available in a white finish



SMB 110 series shown with optional items

NOW SHIPPING

| Model | Version Description | Part Number |
|----------------------------|---|-------------|
| SMB 111 | One-gang, White | 70-1286-01 |
| SMB 112 | Two-gang, White | 70-1286-02 |
| SMB 113 | Three-gang, White | 70-1286-03 |
| SMB 114 | Four-gang, White | 70-1286-04 |
| SMB 115 | Five-gang, White | 70-1286-05 |
| SMB Table Clamp Kit | SMB Table Clamp Kit for 110/210 Series; White | 70-1160-13 |

MOUNTING HARDWARE

VM 100

VESA Mount for AV Components

The Extron VM 100 VESA mount kit secures Extron products to the back of displays. It accommodates various product heights and widths, including select Extron fiber and twisted pair receivers. The VM 100 K kit consists of a VESA mounting plate and a product base plate. To attach it to a display, the mounting plate offers 75 mm and 100 mm VESA hole patterns. The product base plate provides mounting screw patterns for many Extron products and mounting holes compatible with select, small form factor PCs. Additional VM 100 P product base plates are available for system expansion. The optional VM 100 C cover provides added security and improved aesthetics. Streamlining integration, the VM 100 mounting kit allows a signal extension receiver, amplifier, or power supply to be secured discreetly behind a display within minutes.

FEATURES

- Conveniently mount AV components behind a display
- Compact VESA display mounting system for 2" (50.8 mm) high, 6" (152.4 mm) deep, quarter-rack width products
- Compatible with 75 mm x 75 mm and 100 mm x 100 mm VESA hole patterns
- VM 100 K consists of a VESA display mounting plate and a VM 100 P product base plate
- Additional VM 100 P plates available for expansion
- Supports a wide variety of Extron and third-party AV components
- Optional VM 100 C cover provides added security and improved aesthetics



VM 100 Series shown with optional items

NOW SHIPPING

| Model | Version Description | Part Number |
|-----------------|--------------------------|-------------|
| VM 100 K | VESA Mount Kit | 70-1269-01 |
| VM 100 P | Product Base Plate | 70-1269-02 |
| VM 100 C | Product Base Cover | 70-1269-03 |

INTEGRATION TOOLS

EDID 101H 4K PLUS

4K/60 EDID Emulator with EDID Minder® for HDMI

The Extron EDID 101H 4K PLUS is an EDID emulator for 4K/60 HDMI signal sources. It features EDID Minder®, an Extron-exclusive technology that provides automatic and continuous EDID management. This ensures that the source displays the optimal resolution and frame rate upon power up. Pre-stored EDID information is communicated to the source based on a user-selected resolution and refresh rate. Alternatively, the emulator can capture and store EDID from a connected display. It supports signals up to 4K/60 @ 4:4:4 at data rates up to 18 Gbps, as well as HDR. Housed in a compact 1" high, quarter-rack width enclosure, the EDID 101H 4K PLUS provides convenient, discreet installation. An energy-efficient external universal Everlast™ power supply is included.

FEATURES

- Supports computer and video resolutions up to 4K/60 @ 4:4:4
- EDID Minder® automatically manages EDID communication between connected devices
- Selectable resolutions and refresh rates
- EDID capture mode
- Supported HDMI 2.0b specification features include data rates up to 18 Gbps, HDR, Deep Color up to 12-bit, 3D, HD lossless audio formats, and CEC pass-through
- HDCP 2.3 compliant



18 Gbps
4K/60 4:4:4

| Model | Version Description | Part Number |
|-------------------|------------------------------------|-------------|
| EDID 101H 4K PLUS | EDID Emulator for 4K/60 HDMI | 60-1680-01 |

CABLES & ADAPTERS

DP Pro Plenum Series

DisplayPort 8K Optical Cables - Plenum

The Extron DP Pro Plenum Series features active, hybrid optical-copper cables for the ultra high-speed transmission of DisplayPort 1.4 signals. These cables support video resolutions up to 8K/30 @ 4:4:4, HDR, EDID, HDCP, CEC, and 32 channels of audio. Ultra-thin 0.18" (4.7 mm) diameter, narrow bend radius cable construction provides ease of installation in tight spaces, including plenum air spaces, without compromising performance. The active cables are unidirectional and draw ultra-low power from the connected DisplayPort devices. DP Pro Plenum Series cables are available in lengths from 25 feet to 150 feet (7.6 meters to 45.7 meters).

FEATURES

- Conforms to DisplayPort 1.4 standards
- Supports data rates up to 32.4 Gbps and video resolutions up to 8K/30 @ 4:4:4
- Support for HDR - High Dynamic Range video
- Supports EDID, HDCP, and CEC
- Flexible, ultra-thin 0.18" (4.7 mm) diameter cable
- Plenum, NEC CMP-rated cable
- No external power is needed
- Highly resistant to EMI/RFI interference
- Color-coded and labeled ends



8K

NOW SHIPPING

| Model | Version Description | Part Number |
|--------------|---------------------|-------------|
| DP Pro P/25 | 25' (7.6 m) | 26-727-25 |
| DP Pro P/35 | 35' (10.6 m) | 26-727-35 |
| DP Pro P/50 | 50' (15.2 m) | 26-727-50 |
| DP Pro P/75 | 75' (22.8 m) | 26-727-75 |
| DP Pro P/100 | 100' (30.4 m) | 26-727-100 |
| DP Pro P/125 | 125' (38 m) | 26-727-125 |
| DP Pro P/150 | 150' (45.7 m) | 26-727-150 |

For updated product availability, go to www.extron.com



Extron Courses and Videos - Anytime. Anywhere.

Online Training That Fits Your Busy Life

The Extron online training portal has been re-engineered from the ground up. It's easier than ever to access the quality Extron training you expect, whenever and wherever you need it. Our new online training site lets you access courses and videos using any desktop, tablet, or mobile device. Several online courses are now available to help you expand your skill set and demonstrate your expertise. All courses and certifications offer continuing education units for AVIXA and BICSI certifications.

Online Offerings

NEW XTP Systems Engineer – XTP-E

Online Certification

- Understand the general principles and best practices of XTP system design
- Identify the functionality of the XTP product line and software applications
- Navigate within the XTP configuration software and become familiar with the layout, functionality, and features
- Demonstrate how to properly design and validate a series of XTP systems

Extron ProDSP Specialist - EDSP

Online Training

- Learn to deploy and maintain AV systems that include Extron ProDSP products
- Explore advanced features within Extron DSP Configurator Software
- Demonstrate mastery of DSP system configuration, control, management, and troubleshooting

AV Associate – AVA

Online Certification

- Comprehensive training on fundamental AV technologies
- Overview of Extron products and applications
- Complete the modules at your own pace for industry-wide accreditation

AV Principles – AVP

Online Training

- Series of no-cost online training sessions can be completed from home or work
- Provides a general understanding of AV technology
- Designed to increase awareness of Extron solutions and system applications

Extron Control Specialist – ECS

Online Certification

- Learn to successfully deploy and maintain customized AV control systems
- Configure Extron Pro Series control products using Extron Global Configurator™ Plus software
- Focus on control system customization for a wide range of applications and remote system management

How-To Videos

- Short tutorials on the latest features of Extron software, basic AV skills and device installation
- Step-by-step device installation and software click-thru videos
- Helpful instruction that can be easily accessed from anywhere

Learn More

To find out more about Extron Online Training, contact your Extron S3 Customer Support Representative



Extron Satisfaction Guarantee

As a leading manufacturer in the AV industry, we are committed to engineering and manufacturing our products to the highest standards of quality, performance, and value. From our advanced product design, manufacturing and quality control procedures to our friendly and knowledgeable support teams, our commitment to satisfy you is paramount. In every interaction with Extron, you can be confident you will receive our S3 commitment to Service, Support, and Solutions. For 37 years, our objective has been to ensure that every customer is completely satisfied with every purchase.

To underscore this commitment, we offer our Satisfaction Guarantee. This means we will work diligently to resolve any issue you have with your purchase until you are completely satisfied. Extron employees are prepared to do whatever it takes to make certain that the entire process of doing business with us is a positive and professionally rewarding experience for you.

I'm so confident in our ability to deliver on this pledge that I back it personally. If you are not satisfied with any part of your transaction with Extron, I want to know. Please contact me at president@extron.com. I will personally address any unresolved customer issue. We greatly appreciate your business. It is our intent to keep you as a customer for life.

A handwritten signature in dark ink, reading "Andrew C. Edwards".

Andrew C. Edwards
President





WORLDWIDE SALES OFFICES

Anaheim • Raleigh • Silicon Valley • Dallas • New York • Washington, DC • Toronto • Mexico City • Paris • London • Frankfurt
Madrid • Stockholm • Amersfoort • Moscow • Dubai • Johannesburg • Tel Aviv • Sydney • Melbourne
Bangalore • Mumbai • New Delhi • Singapore • Seoul • Shanghai • Beijing • Hong Kong • Tokyo

www.extron.com