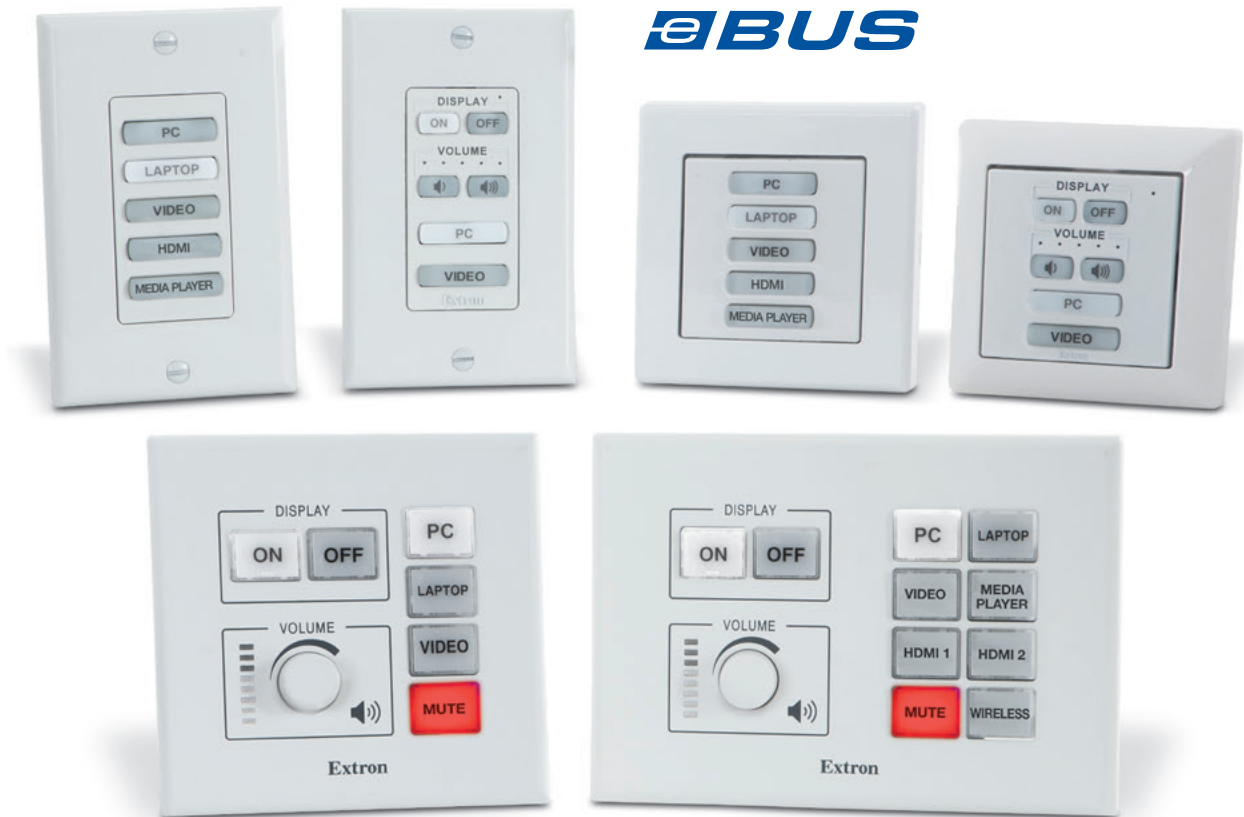


eBUS Button Panels

AV SYSTEM CONTROL INTERFACES



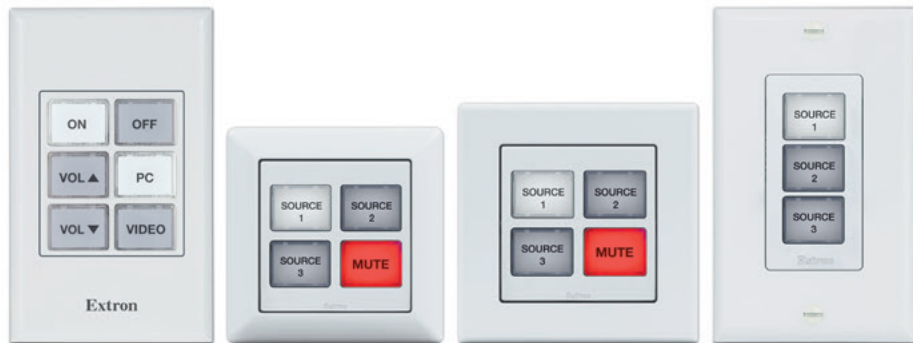
The Easiest Way to Deploy and Expand AV System Control

- ▶ Fully customizable button panels integrate easily with an Extron Pro Series control system
- ▶ Single-cable connection enables easy system expansion and greater design options
- ▶ Use a single button panel or multiple button panels, depending on your application needs
- ▶ Backlit buttons provide easy operation in low-light environments
- ▶ Compatible with all IPCP Pro control processors
- ▶ Easy-to-use eBUS control modules expand eBUS capabilities

Extron

eBUS Button Panels

Extron's eBUS button panels are customizable, integration-friendly AV system control interfaces designed for use with Extron IPCP Pro control processors. eBUS button panels come in standard form factors and multiple units may be linked together by a single cable that carries both power and communication. Since they have the same physical appearance as Extron's broad range of MediaLink controllers and Network Button Panels, eBUS button panels can be used alongside them throughout a facility while preserving a consistent look and user experience.



eBUS

Extron's integration friendly eBUS technology is based on a unique digital bus architecture that allows for easy control system expansion, greater design options, and future upgrades. As with our TouchLink Pro touchpanels, eBUS button panels are designed for use with any Extron IPCP Pro Series control processor. A single eBUS button panel can be used as the AV control interface for a smaller system or multiple button panels and touchpanels may be combined when a more elaborate control system is required. Powered and non-powered eBUS distribution hubs are available to accommodate a variety of system design topologies.

IP LINK®

IPCP Pro control processors are designed to work with eBUS Button Panels, Network Button Panels, and TouchLink® Pro touchpanels for AV system and room control. These processors are equipped with more memory to support more elaborate AV system designs. IPCP Pro control processors enable almost any AV device to be controlled, monitored, and accessed from a Local Area Network, Wide Area Network, or the Internet.



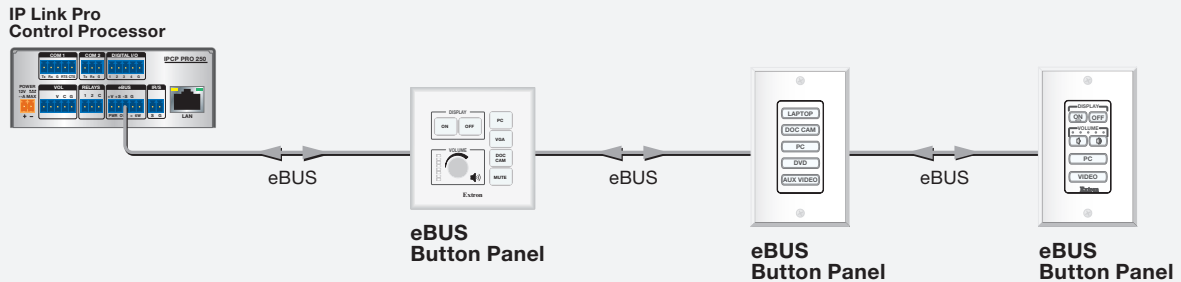
Depending on which button panel you choose, individual buttons can be easily customized using the Extron Button Label Generator or by using the online Custom Button Builder application. All eBUS button panels feature backlit buttons that are easy to read even in low-light environments.

EBUS TOPOLOGIES

All eBUS button panels feature two eBUS ports for easy system expansion and upgrades. Since eBUS button panels share one control processor and are connected with a single cable, they can be arranged in various configurations or topologies that best suit your application and environment. Total cable distance in any configuration must not exceed 1,000 feet. The following designs represent the most popular eBUS system topologies:

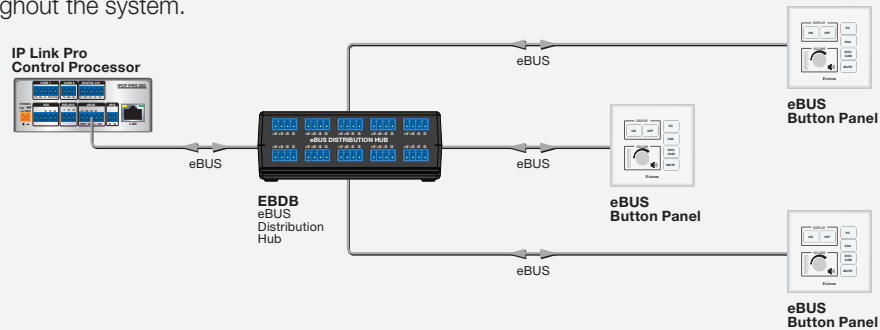
DAISY CHAIN

In a daisy chain topology, one of the eBUS ports is used for input from the previous button panel or control processor in the chain and the other is used for output to the next button panel. In this simple configuration, the IPCP Pro control processor can be mounted out of the way, at the terminal end of the chain.



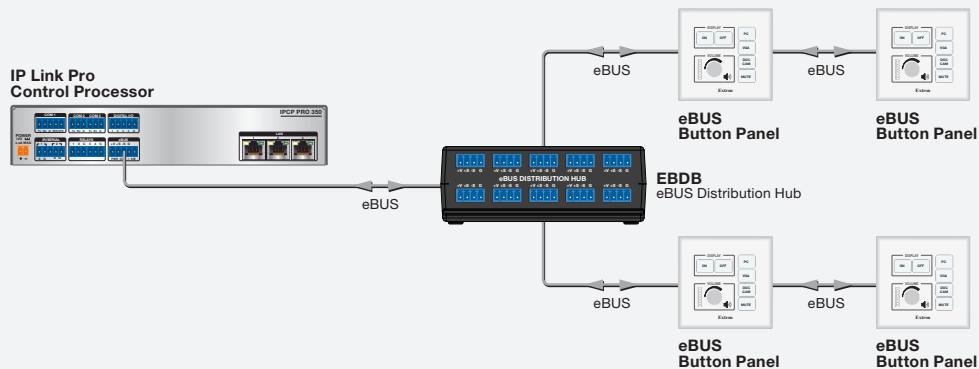
STAR

A star topology can be achieved by using either an Extron EBDB or a PS 1220EB eBUS distribution hub. A single cable connects the IPCP Pro control processor to the eBUS distribution hub. From the hub, up to eight eBUS button panels can be connected and arranged throughout the system.



HYBRID

A hybrid topology combines configuration elements from the daisy chain and star designs.



EBUS BUTTON PANELS – US GANG

Discrete On and Off Buttons

Control display power and simplify system operations

Wallplate colors

Black and white wallplates included

Customizable Buttons

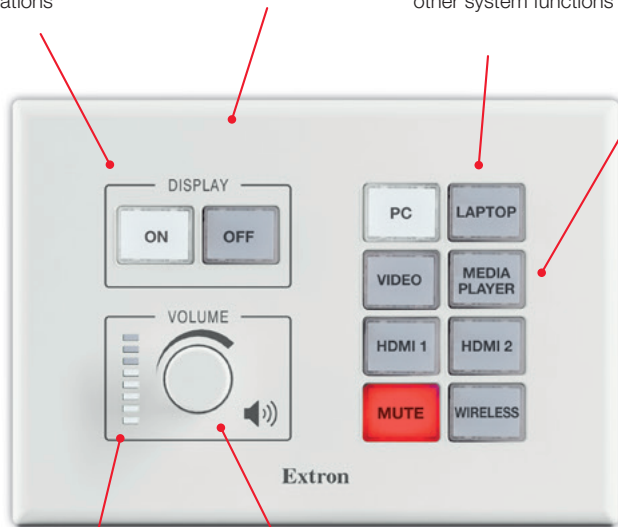
Provide intuitive control for source selection or other system functions

Dual-color backlit buttons

10 Dual color, backlit buttons can be labeled in the field for easy identification

DIP switches

DIP switches are used to set unique eBUS device addresses



LED indicators

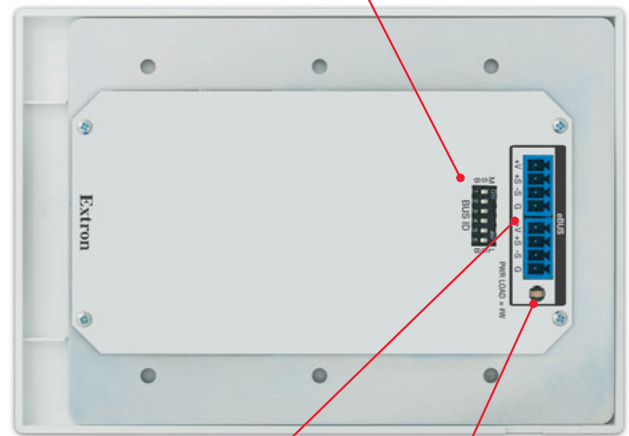
Visual level indicators take the guesswork out of volume control

Volume control

Knob for smooth, precise volume adjustment

Mounting options

Compatible with three-gang US electrical box or included mud ring



eBUS ports

Two eBUS ports for connection to an IPCP Pro control processor or combining with other eBUS devices

Diagnostic LED

eBUS diagnostic LED provides connection status for troubleshooting

The EBP 50, EBP 100, and EBP 200 are one, two and three-gang eBUS button panels with dual-colored backlit buttons and a volume control knob for smooth, precise volume adjustments.

SERIES COMMON FEATURES

- ▶ Fully customizable button panel integrates easily with an Extron Pro Series control system
- ▶ Dual-color, customizable, backlit buttons
- ▶ Two eBUS® ports allow for quick system expansion and upgrades
- ▶ Compatible with all Extron IPCP Pro control processors
- ▶ Use a single button panel or combine multiple button panels to accommodate a broad variety of system designs
- ▶ eBUS button panels connect to the control processor and each other using a single cable that carries both power and communication
- ▶ DIP switches are used to set unique eBUS device addresses and minimize setup time
- ▶ eBUS diagnostic LED provides connection status for troubleshooting
- ▶ Removable button caps make changing labels in the field easy – Label each button to clearly indicate its function. Labels can be quickly changed and don't require programming or engraving.
- ▶ Removable captive screw connectors allow for quick installation
- ▶ Reset button – Allows firmware to be reset to original factory settings.
- ▶ Section 508 Compliant – Meets or exceeds accessibility standards for Electronic Information Technology.
- ▶ Supports the Extron Control App



EBP 50

eBUS Button Panel with 6 Buttons - US Single-Gang

Unique Features

- Six dual-color, customizable, backlit buttons
- Includes black and white, one-gang faceplates and mud ring



EBP 100

eBUS Button Panel with 6 Buttons - US 2-Gang

Unique Features

- Six dual-color, customizable, backlit buttons
- Discrete On and Off display power controls
- Volume control knob with LEDs for visual feedback
- Includes black and white, two-gang faceplates and mud ring

Model
EBP 50

Version Description
Single-Gang, Black and White, 6 Button

Part Number
60-1670-01

Model
EBP 100

Version Description
2-Gang, Black and White, 6 Button

Part Number
60-1388-01



EBP 200

eBUS Button Panel with 10 Buttons - US 3-Gang

Unique Features

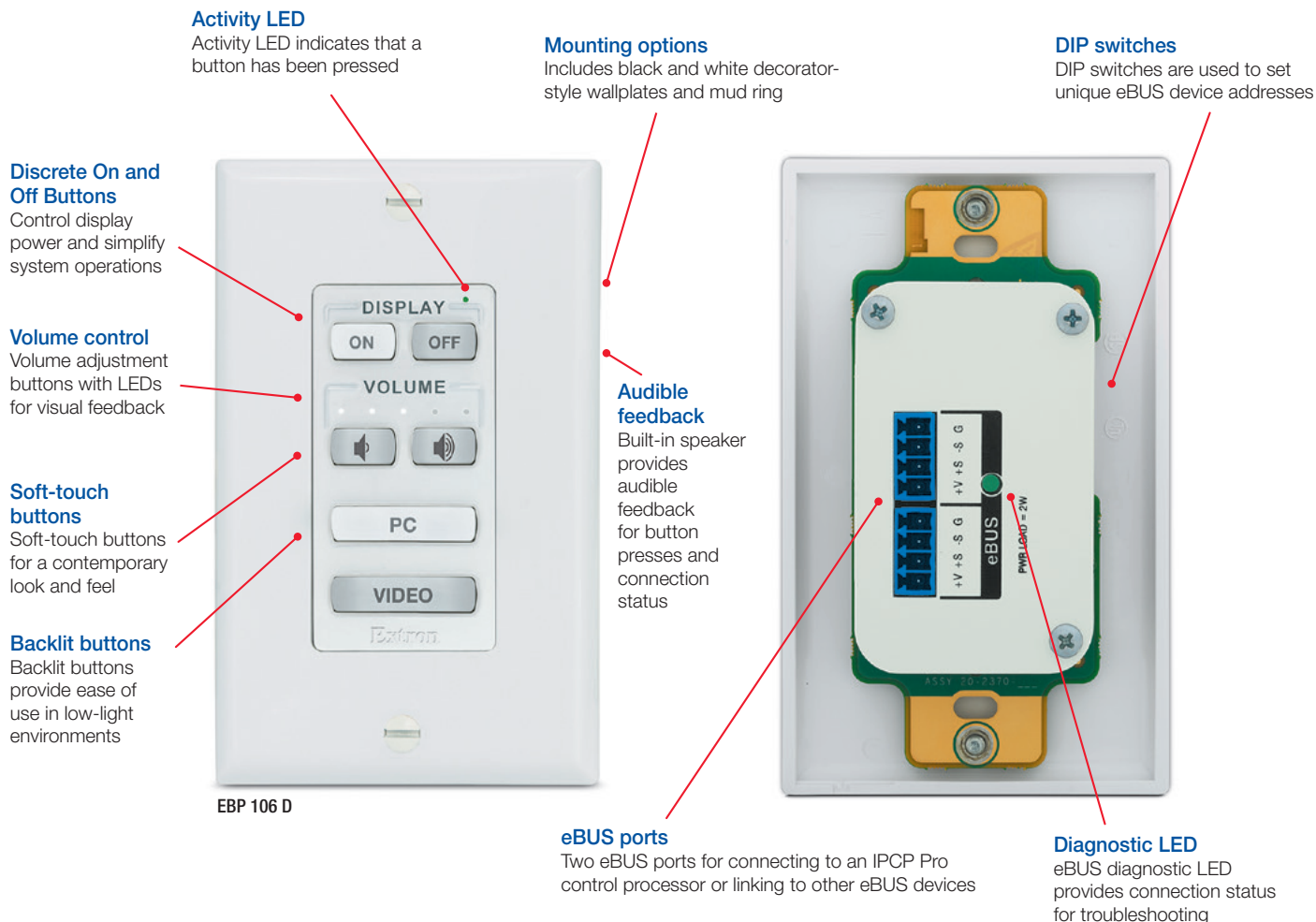
- Ten dual-color, customizable, backlit buttons
- Discrete On and Off display power controls
- Volume control knob with LEDs for visual feedback
- Includes black and white, three-gang faceplates and mud ring

Model
EBP 200

Version Description
3-Gang, Black and White, 10 Button

Part Number
60-1389-01

EBUS BUTTON PANELS – DECORATOR-STYLE



Extron decorator-style button panels offer customizable, buttons that are backlit for easy operation in low-light environments. They mount in single or dual-gang junction boxes and include black and white decorator-style wallplates and mud rings.

SERIES COMMON FEATURES

- ▶ Fully customizable button panel integrates easily with an Extron Pro Series control system
- ▶ Two eBUS ports allow for quick system expansion and upgrades
- ▶ Compatible with all Extron IPCP Pro control processors
- ▶ Use a single button panel or combine multiple button panels to accommodate a broad variety of system designs
- ▶ eBUS button panels connect to the control processor and each other using a single cable that carries both power and communication
- ▶ DIP switches are used to set unique eBUS device addresses and minimize setup time
- ▶ eBUS diagnostic LED provides connection status for troubleshooting
- ▶ Supports the Extron Control App



EBP 103 D

eBUS Button Panel with 3 Buttons - Decorator-Style Wallplate

Unique Features

- Three dual-color, customizable, backlit buttons
- Removable button caps make changing labels in the field easy
- Includes black and white single gang decorator-style wallplates and mud ring

Model	Version Description	Part Number
EBP 103 D	Decorator-Style, Black and White, 3 Button	60-1671-01



EBP 105 D

eBUS Button Panel with 5 Buttons - Decorator-Style

Unique Features

- Five backlit, soft-touch buttons that can be customized using Extron's Custom Button Builder
- Built-in speaker provides audible feedback for button presses
- Include black and white single gang decorator-style wallplates and mud ring

Model	Version Description	Part Number
EBP 105 D	Decorator-Style, Black and White, 5 Button	60-1085-01



EBP 106 D

eBUS Button Panels with 6 Buttons - Decorator-Style

Unique Features

- Six backlit, soft-touch buttons that can be customized using Extron's Custom Button Builder
- Volume adjustment buttons with LED level indication
- Discrete On and Off display power controls
- Built-in speaker provides audible feedback for button presses
- Activity LED indicates various states of the button panel
- Include black and white single gang decorator-style wallplates and mud ring

Model	Version Description	Part Number
EBP 106 D	Decorator-Style, Black and White, 6 Button	60-1084-01



EBP 106P D

eBUS Button Panel with 6 Buttons - Decorator-Style

Unique Features

- Six backlit, soft-touch buttons that can be customized using Extron's Custom Button Builder
- Discrete On and Off display power controls
- Built-in speaker provides audible feedback for button presses
- Activity LED indicates various states of the button panel
- Include black and white single gang decorator-style wallplates and mud ring

Model	Version Description	Part Number
EBP 106P D	Decorator-Style, Black and White, 6 Button	60-1093-01

EBUS BUTTON PANELS – DECORATOR-STYLE



EBP 108 D

eBUS Button Panel with 8 Buttons - Decorator-Style

Unique Features

- Eight backlit, soft-touch buttons that can be customized using Extron's Custom Button Builder
- Volume adjustment buttons with LED level indication
- Discrete On and Off display power controls
- Built-in speaker provides audible feedback for button presses
- Activity LED indicates various states of the button panel
- Includes black and white single gang decorator-style wallplates and mud ring

Model	Version Description	Part Number
EBP 108 D	Decorator-Style, Black and White, 8 Button	60-1189-01



EBP 110 D

eBUS Button Panel with 10 Buttons - Decorator-Style

Unique Features

- Ten backlit, soft-touch buttons that can be customized using Extron's Custom Button Builder
- Built-in speaker provides audible feedback for button presses
- Include black and white single gang decorator-style wallplates and mud ring

Model	Version Description	Part Number
EBP 110 D	Decorator-Style, Black and White, 10 Button	60-1190-01



EBP VC1 D

eBUS Button Panel with Volume Control - Decorator-Style

Unique Features

- Volume control knob with LEDs for visual feedback
- Dual-color, customizable, backlit mute button
- Can be customized using Extron's Custom Button Builder
- Built-in speaker provides audible feedback for button presses
- Include black and white single gang decorator-style wallplates and mud ring

Model	Version Description	Part Number
EBP VC1 D	Decorator-Style, Black and White, Vol Control	60-1184-01



EBP VC2 D

eBUS Button Panel with Dual Volume Control - Decorator-Style

Unique Features

- Six backlit, soft-touch buttons that can be customized using Extron's Custom Button Builder
- Volume adjustment and mute buttons with LED level indication
- Microphone adjustment and mute buttons with LED level indication
- Built-in speaker provides audible feedback for button presses
- Include black and white single gang decorator-style wallplates and mud ring

Model	Version Description	Part Number
EBP VC2 D	Decorator-Style, Black and White, Dual Vol	60-1094-01



EBP NAV D

eBUS Button Panel with Transport Control - Decorator-Style

Unique Features

- Fourteen backlit, soft-touch buttons provide easy, intuitive control of Blu-ray and DVD players, streaming video, and other media sources
- Video transport controls
- Built-in speaker provides audible feedback for button presses
- Include black and white single gang decorator-style wallplates and mud ring



EBP 111 D

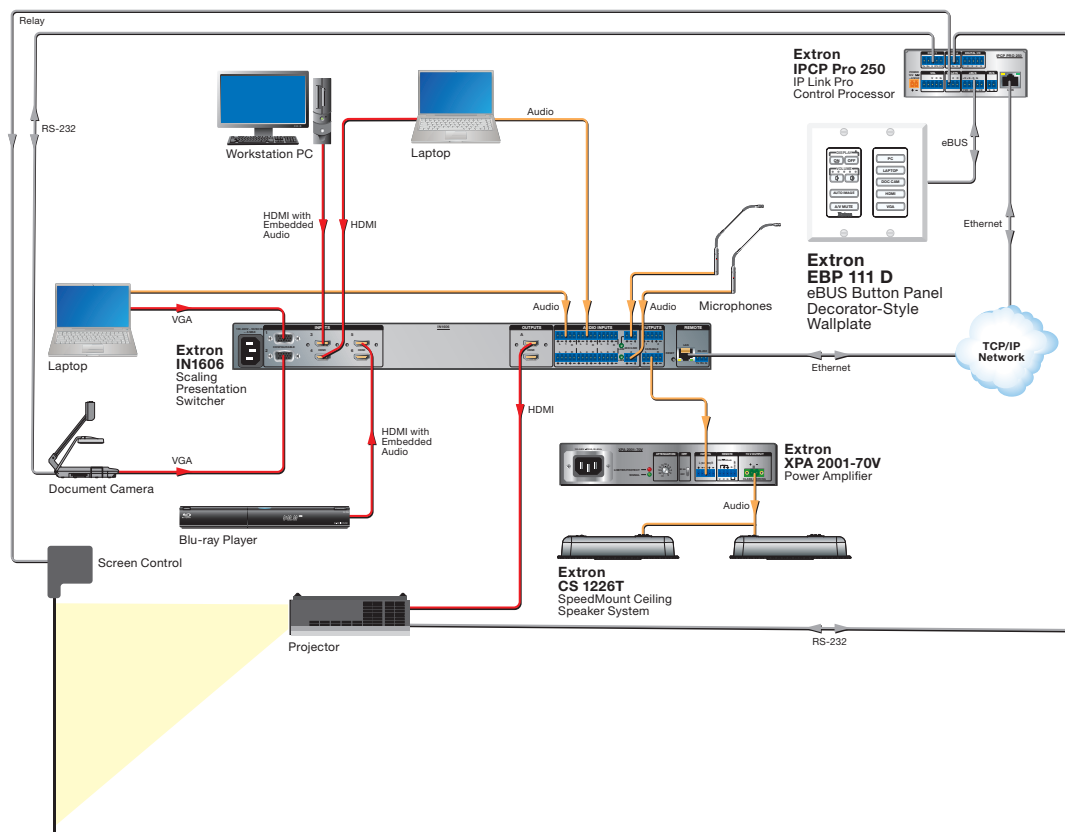
eBUS Button Panel with 11 Buttons - Decorator-Style 2-Gang

Unique Features

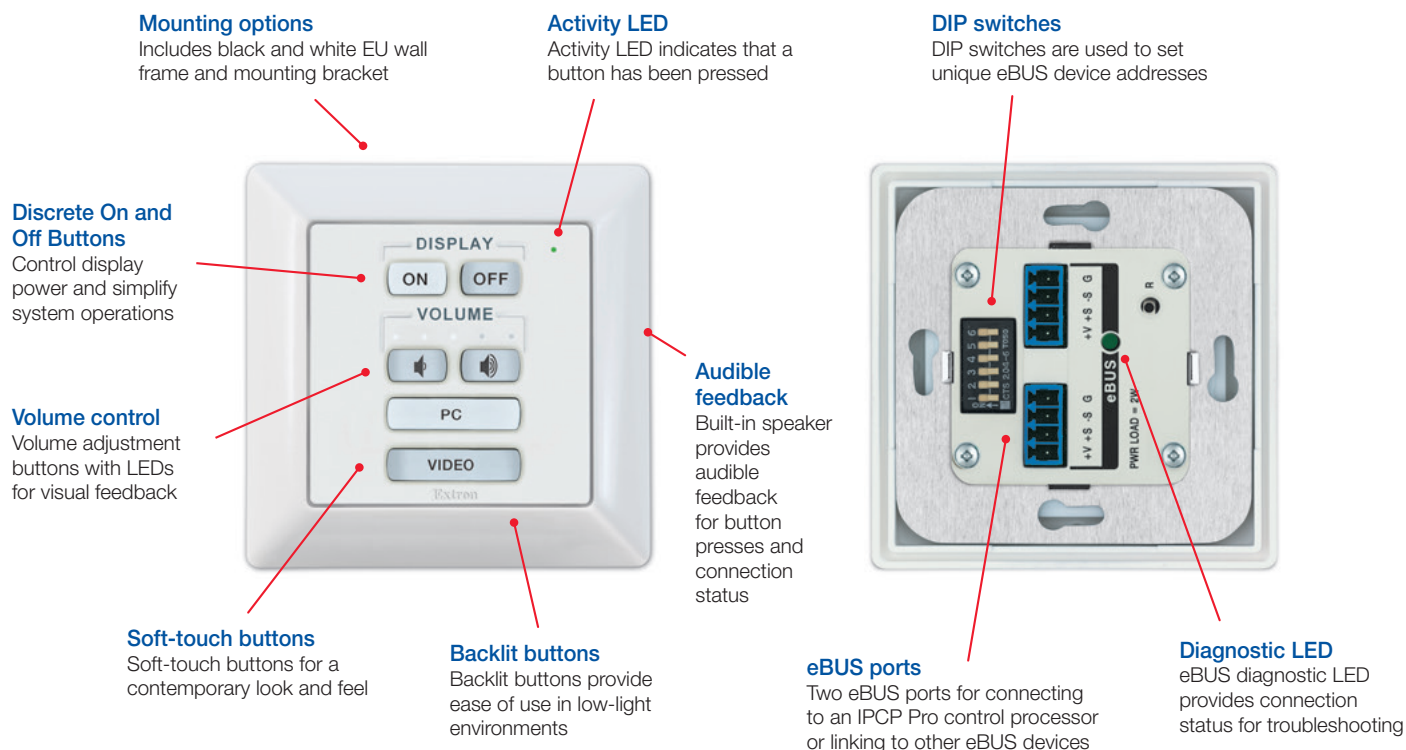
- Eleven backlit, soft-touch buttons that can be customized using Extron's Custom Button Builder
- Volume adjustment buttons with LED level indication
- Discrete On and Off display power controls
- Built-in speaker provides audible feedback for button presses
- Activity LED indicates various states of the button panel
- Includes two-gang black and white Decorator-Style wallplates and mud ring

Model	Version Description	Part Number
EBP NAV D	Decorator-Style, Black and White, Transport Control	60-1086-01

Model	Version Description	Part Number
EBP 111 D	Decorator-Style, Black and White, 11 Button	60-1087-01



EBUS BUTTON PANELS – FLEX55 & EU



Extron Flex55 and EU button panels support Extron's globally-compatible Flex55 mounting system as well as the standard EU form factor. Extron Flex55 enclosures accommodate modules and mounting products. They provide a stylish architectural solution that works almost anywhere, including Europe, Asia, North America, and other world markets.

SERIES COMMON FEATURES

- ▶ Fully customizable button panel integrates easily with an Extron Pro Series control system
- ▶ Two eBUS® ports allow for quick system expansion and upgrades
- ▶ Compatible with all Extron IPCP Pro control processors
- ▶ Use a single button panel or combine multiple button panels to accommodate a broad variety of system designs
- ▶ eBUS button panels connect to the control processor and each other using a single cable that carries both power and communication
- ▶ DIP switches are used to set unique eBUS device addresses and minimize setup time
- ▶ Various eBUS diagnostic LEDs provide connection, communication, and ID status for troubleshooting
- ▶ Removable captive screw connectors allow for quick installation
- ▶ Supports the Extron Control App
- ▶ Compatible with Flex55 modules, mounting kits, and enclosures or EU junction boxes
- ▶ Designed to mount into one-gang EU junction boxes and enclosures having 60 mm mounting centers
- ▶ Includes black and white EU wall frames and mounting bracket



EBP 104 EU

eBUS Button Panel with 4 Buttons - Flex55 and EU

Unique Features

- Four dual-color, customizable, backlit buttons
- Removable button caps make changing labels in the field easy

Model	Version Description	Part Number
EBP 104 EU	Flex55 and EU, Black and White, 4 Button	60-1672-31



EBP 105 EU

EBP 105 EU

eBUS Button Panel with 5 Buttons - Flex55 and EU

Unique Features

- Five backlit, soft-touch buttons that can be customized using Extron's Custom Button Builder
- Built-in speaker provides audible feedback for button presses

Model	Version Description	Part Number
EBP 105 EU	Flex55 and EU, Black and White, 5 Button	60-1085-31



EBP 105P EU

EBP 105P EU

eBUS Button Panel with 5 Buttons - Flex55 and EU

Unique Features

- Five backlit, soft-touch buttons that can be customized using Extron's Custom Button Builder
- Discrete On and Off display power controls
- Activity LED indicates various states of the button panel
- Built-in speaker provides audible feedback for button presses

Model	Version Description	Part Number
EBP 105P EU	Flex55 and EU, Black and White, 5 Button	60-1093-31



EBP 106 EU

eBUS Button Panel with 6 Buttons - Flex55 and EU

Unique Features

- Six backlit, soft-touch buttons that can be customized using Extron's Custom Button Builder
- Volume adjustment buttons with LED level indication
- Built-in speaker provides audible feedback for button presses
- Activity LED indicates various states of the button panel

Model	Version Description	Part Number
EBP 106 EU	Flex55 and EU, Black and White, 6 Button	60-1084-31



EBP 108 EU

eBUS Button Panel with 8 Buttons - Flex55 and EU

Unique Features

- Eight backlit, soft-touch buttons that can be customized using Extron's Custom Button Builder
- Volume adjustment buttons with LED level indication
- Discrete On and Off display power controls
- Built-in speaker provides audible feedback for button presses
- Activity LED indicates various states of the button panel

Model	Version Description	Part Number
EBP 108 EU	Flex55 and EU, Black and White, 8 Button	60-1189-31



EBP 110 EU

eBUS Button Panel with 10 Buttons - Flex55 and EU

Unique Features

- Ten backlit, soft-touch buttons that can be customized using Extron's Custom Button Builder
- Built-in speaker provides audible feedback for button presses

Model	Version Description	Part Number
EBP 110 EU	Flex55 and EU, Black and White, 10 button	60-1190-31



EBP NAV EU

eBUS Button Panel with Transport Control - Flex55 and EU

Unique Features

- Fourteen backlit, soft-touch buttons provide easy, intuitive control of Blu-ray and DVD players, streaming video, and other media sources
- Video transport controls
- Built-in speaker provides audible feedback for button presses

Model	Version Description	Part Number
EBP NAV EU	Flex55 and EU, Black and White, Transport Control	60-1086-31



EBP VC1 EU

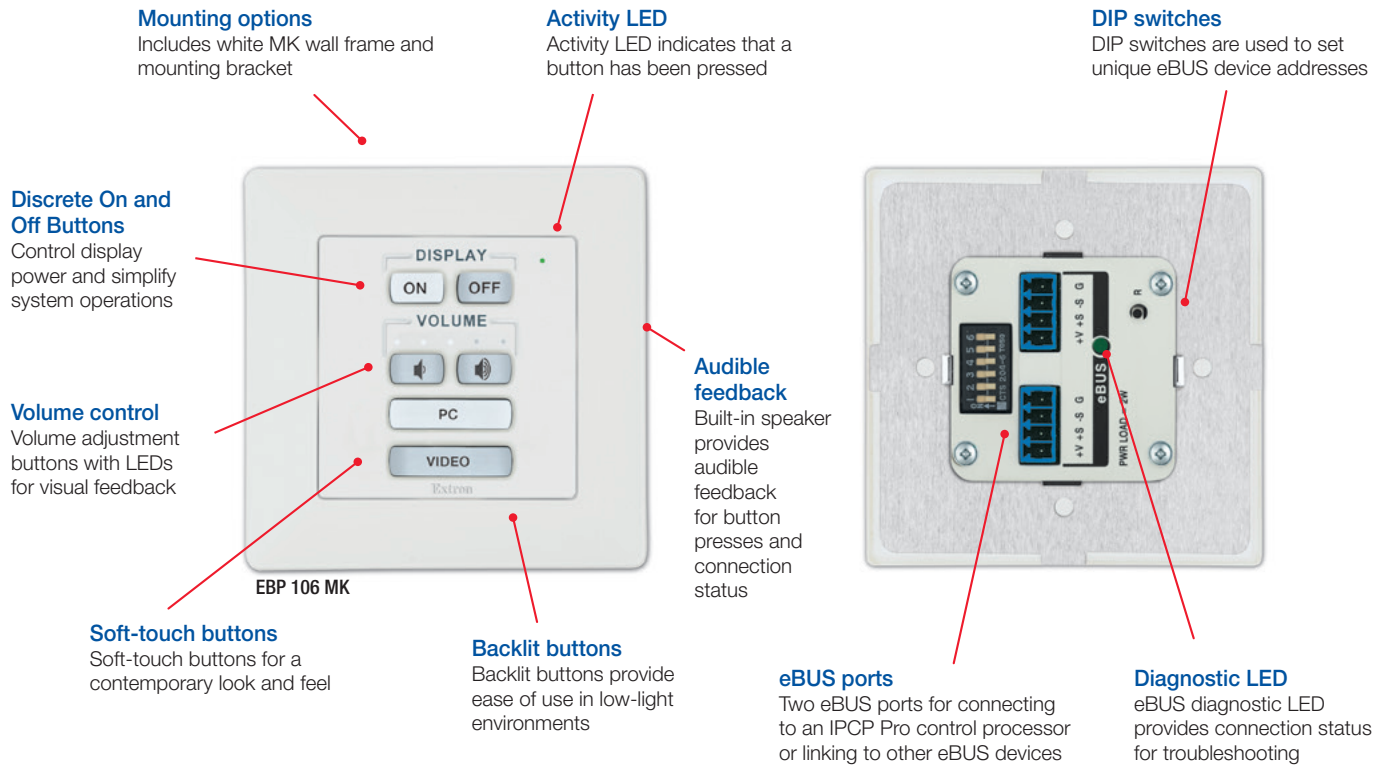
eBUS Button Panel with Volume Control - Flex55 and EU

Unique Features

- Volume control knob with LEDs for visual feedback
- Dual-color, customizable, backlit mute button
- Can be customized using Extron's Custom Button Builder
- Built-in speaker provides audible feedback for button presses

Model	Version Description	Part Number
EBP VC1 EU	Flex55 and EU, Black and White, Vol Control	60-1184-31

EBUS BUTTON PANELS – MK



MK wall frame eBUS models mount into one-gang MK boxes and enclosures for use in the UK, Middle East, Singapore, and other regions using MK-type enclosures. They include white wall frames and mounting brackets.

SERIES COMMON FEATURES

- ▶ Fully customizable button panel integrates easily with an Extron Pro Series control system
- ▶ Two eBUS® ports allow for quick system expansion and upgrades
- ▶ Compatible with all Extron IPCP Pro control processors
- ▶ Use a single button panel or combine multiple button panels to accommodate a broad variety of system designs
- ▶ eBUS button panels connect to the control processor and each other using a single cable that carries both power and communication
- ▶ DIP switches are used to set unique eBUS device addresses and minimize setup time
- ▶ Various eBUS diagnostic LEDs provide connection, communication, and ID status for troubleshooting
- ▶ Removable captive screw connectors allow for quick installation
- ▶ Supports the Extron Control App
- ▶ Designed to mount into one-gang MK boxes and enclosures for use in the UK, Middle East, Singapore and other regions using MK-type enclosure
- ▶ Includes white MK wall frame and mounting bracket

EBUS BUTTON PANELS – MK



EBP 104 MK

eBUS Button Panel with 4 Buttons - MK

Unique Features

- Four dual-color, customizable, backlit buttons
- Removable button caps make changing labels in the field easy

Model	Version Description	Part Number
EBP 104 MK	MK Mount, White, 5 Button	60-1672-23



EBP 105 MK

eBUS Button Panel with 5 Buttons - MK

Unique Features

- Five backlit, soft-touch buttons that can be customized using Extron's Custom Button Builder
- Built-in speaker provides audible feedback for button presses

Model	Version Description	Part Number
EBP 105 MK	MK Mount, White, 5 Button	60-1085-23



EBP 106 MK

eBUS Button Panel with 6 Buttons - MK

Unique Features

- Six backlit, soft-touch buttons that can be customized using Extron's Custom Button Builder
- Volume adjustment buttons with LED level indication
- Built-in speaker provides audible feedback for button presses
- Activity LED indicates various states of the button panel

Model	Version Description	Part Number
EBP 106 MK	MK Mount, White, 6 Button	60-1084-23



EBP 108 MK

eBUS Button Panel with 8 Buttons - MK

Unique Features

- Eight backlit, soft-touch buttons that can be customized using Extron's Custom Button Builder
- Volume adjustment buttons with LED level indication
- Discrete On and Off display power controls
- Built-in speaker provides audible feedback for button presses
- Activity LED indicates various states of the button panel

Model	Version Description	Part Number
EBP 108 MK	MK Mount, White, 8 Button	60-1189-23



EBP 110 MK

eBUS Button Panel with 10 Buttons - MK

Unique Features

- Ten backlit, soft-touch buttons that can be customized using Extron's Custom Button Builder
- Built-in speaker provides audible feedback for button presses



EBP VC1 MK

eBUS Button Panel with Volume Control - MK

Unique Features

- Volume control knob with LEDs for visual feedback
- Dual-color, customizable, backlit mute button
- Can be customized using Extron's Custom Button Builder
- Built-in speaker provides audible feedback for button presses

Model	Version Description	Part Number
EBP 110 MK	MK Mount, White, 10 Button	60-1190-23

Model	Version Description	Part Number
EBP VC1 MK	MK Mount, White, Vol Control	60-1184-23

CABLE CUBBY EBUS BUTTON PANEL

Patented modular design

For fast assembly and serviceability, AV connectivity can be installed or serviced from the top of the enclosure, after it is installed.

Supports a wide range of cable management applications

Cable Cubby enclosures offer a variety of sizes and configurations to support your cable management application.

Ten backlit, soft-touch buttons

Easily customized using Extron's Custom Button Builder

Choice of AC-only or AC+USB Power Modules

AC-only or AC+USB Power Modules are available for the US, Europe, and other major world markets. The available AC+USB modules feature two 5 VDC USB power outlets and up to 2.1 A / 10.5 watts of power for charging mobile devices.

AV connectivity

Enclosures include brackets for mounting Retractor or Retractor XL cable retraction modules, AAP - AV Connectivity Modules, or AV cables to the left or right of the AC module. Optional bracket kits allow the AC power module to be mounted in the center of the enclosure for additional flexibility in configuring AV connectivity.

Choice of black anodized or brushed aluminum finish

The top surface of Cable Cubby Series enclosures is designed to blend seamlessly with modern furniture and room decor.

Low-profile lid with full width cable pass-through

Provides convenient access to AV cables and AC power, whether open or closed.

The Extron EBP 1200C eBUS button panel combines intuitive AV control, connectivity, and power all in one, furniture-mountable device. The easy-to-use control panel works with all eBUS-enabled control systems and connects to an IPCP Pro control processor to perform a wide variety of AV system functions such as display On/Off, input switching, volume control, and much more.

The flip-up button panel has ten customizable, soft-touch buttons that are backlit for easy operation in low-light environments. The cable access enclosure supports up to three single-space AAPs and up to three Extron Retractors. The EBP 1200C enables integrators to deploy a contemporary, furniture-mountable eBUS button panel with cable management and easy access to AV connectivity and power.

Extron's integration-friendly eBUS technology is based on a unique digital bus architecture that allows for easy control system expansion, greater design options, and future upgrades. As with our TouchLink Pro touchpanels, eBUS button panels are designed for use with any Extron IPCP Pro Series control processor. A single eBUS button panel can be used as the AV control interface for a smaller system or multiple button panels and touchpanels may be combined when a more elaborate control system is required.

Features

- ▶ Fully customizable button panel integrates easily with an Extron Pro Series control system
- ▶ Two eBUS® ports allow for quick system expansion and upgrades
- ▶ Compatible with all Extron IPCP Pro control processors
- ▶ Combine multiple eBUS panels to accommodate a broad variety of system designs
- ▶ eBUS button panels connect to the control processor and each other using a single cable that carries both power and communication
- ▶ Cable Cubby 1202 design offers easy access to AV, data, and power connections
 - Accommodates one Series AC 100 Series or AC+USB 200 Series Power Module, plus three Retractors, eight AV cables, or three AAP - AV Connectivity Modules
 - Slim enclosure is ideal for conference tables, desks or study carrels, lecterns, and other work spaces where space is at a premium
 - Patented modular design for fast assembly and serviceability
 - AC Power and AC+USB Power Modules are available for US, Europe, and other major world markets

EBUS CONTROL MODULES

ECM S10 - PARTITION SENSOR SET

The Extron ECM S10 is a partition sensor set designed to automate AV system behavior based on the position of a movable wall. The set connects to any Extron Pro Series device equipped with a digital I/O or eBUS port. It uses an infrared beam to sense the position of a movable partition wall within divisible rooms. The ECM-S10 receiver offers a digital output port and a 14 VDC output to provide power to the transmitter. For convenient integration, eBUS control modules, like the ECM-S10 are linked to the control processor or to other eBUS devices using a single cable that carries both power and communication. The ECM S10 transmitter and receiver each mount into a US single gang, EU, or MK junction box and include white oversized decorator-style wallplates.

Features

- ▶ Partition sensor set that automates system behavior based on the position of a moveable wall within divisible rooms
- ▶ eBUS port allows for easy connection to an eBUS device or IPCP Pro control processor



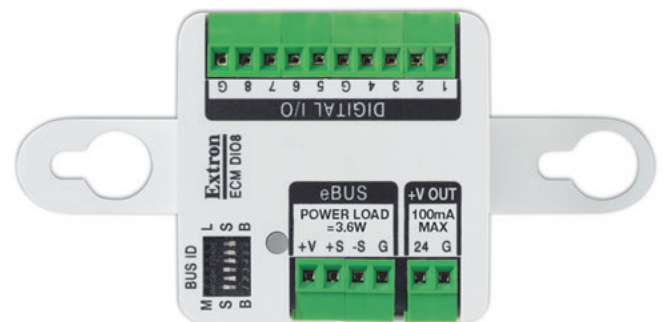
- ▶ Digital output allows for integration with non-eBUS compatible systems that have digital I/O ports.
- ▶ 14VDC output on receiver is used to power the transmitter
- ▶ DIP switches are used to set unique eBUS device addresses and minimize setup time
- ▶ eBUS-enabled receiver connects to the control processor using a single cable that carries both power and communication
- ▶ Compatible with all Extron IPCP Pro control processors and other products featuring a digital I/O
- ▶ Various eBUS diagnostic LEDs provide connection, communication, and ID status for troubleshooting

ECM DIO8 - DIGITAL I/O CONTROL MODULE

The Extron ECM DIO8 is a compact digital I/O control module for Extron eBUS-enabled control systems. This easy-to-use control module connects to an IPCP Pro control processor to interface with a variety of I/O devices, including sensors and contact closure buttons. The ECM DIO8 offers eight software selectable digital I/O ports and a 24 VDC output to provide power to a sensor. For convenient integration, eBUS control modules are linked to the control processor or to other eBUS devices using a single cable that carries both power and communication. The ECM DIO8 mounts in a US single gang, Flex55, EU, or MK enclosure or can be mounted to any flat surface with the included dual-lock fastener.

Features

- ▶ Eight digital I/O ports - Software selectable as a digital input or digital output and can interface with a variety of devices, such as sensors, switches, LEDs, and relays
- ▶ 24V output provides power to a sensor
- ▶ eBUS port allows for easy connection to an eBUS device or IPCP Pro control processor
- ▶ DIP switches are used to set unique eBUS device addresses and minimize setup time



- ▶ eBUS diagnostic LED provides connection status for troubleshooting
- ▶ Direct insertion captive screw connectors allow for quick installation
- ▶ Compatible with all IPCP Pro control processors
- ▶ Includes mounting bracket and dual-lock strip for easy mounting
- ▶ Mounts in a single gang US, Flex55, EU, or MK enclosure or can be mounted to any flat surface

IPCP PRO SERIES CONTROL PROCESSORS – STANDALONE



Control Processors with Enhanced Speed and Security

IPCP Pro series control processors work seamlessly with eBUS devices, Network Button Panels, and TouchLink® Pro interfaces. These control processors are either standalone or integrated into other Extron products and enable almost any AV device to be controlled, monitored, and accessed from a standard networks or the Internet. They are available with a wide variety of RS-232, IR, relay, contact closure, Flex I/O, eBUS, and Ethernet port combinations, including a secure AV LAN port. This allows displays, switchers, source devices, screen control systems, and lighting systems to be networked together for centralized management and operation by the control system.

Configuration or Programming

IPCP Pro Series control processors can be configured using Global Configurator Plus or Global Configurator Professional software or programmed using Global Scripter.

Unlock Powerful New Features with LinkLicense

Extron LinkLicense® is a quick, cost-effective way for people to add even more powerful capabilities to Extron products. Each type of LinkLicense unlocks a unique set of features that add convenience and expand the functionality available in your system. It is applied per-system, enabling you to enhance the capabilities and performance where and when you need it. Activating a LinkLicense on a product is quick and effortless, so you can take immediate advantage of all the benefits.

Secure by Design - The AV LAN Port

Many IP Link Pro control processors are equipped with dedicated AV LAN ports designed to isolate local AV devices and safeguard them against outside intrusion and interference. These control processors are available as standalone products or integrated into other Extron products, such as our IN1608 xi Series of scaling presentation switchers and the DTP CrossPoint 4K IPCP Series of presentation matrix switchers. In addition to the AV LAN ports, these control processors feature advanced security standards and Gigabit Ethernet ports, designed to ensure compatibility with multiple TouchLink Pro touchpanels using a standard network infrastructure.

Mounting Options

An assortment of mounting kits are available for use with IPCP Pro control processors. All control processors are housed in a size-efficient and durable 1" to 1U high and one-quarter to one half rack width enclosure. They are rack and furniture-mountable, and can also be mounted to a projector pole. Their compact size and mounting options help make IPCP Pro control processors very easy to integrate into existing, as well as new AV systems.

IPCP PRO SERIES CONTROL PROCESSORS – EMBEDDED



Powerful Integrated Control Processor

The IN1808, IN1608 xi, and DTP CrossPoint 4K Series feature a built-in Extron IP Link® Pro control processor with a secure, dedicated three-port AV LAN switch and one standard Ethernet port. The network switch ports of the AV LAN are designed to control local AV devices, and safeguard them from outside intrusion or interference. The control processors deliver high-speed processing and abundant control port capacity for complete, customizable control of an entire AV system, including all source devices and displays, plus lighting, window shades, projection screens, occupancy sensing, and more. Simply connect a touchpanel or button panel to create a complete AV control system.

IN1808 IPCP

The Extron IN1808 IPCP is an eight input seamless presentation switcher that supports signal resolutions up to 4K/60 at 4:4:4. It incorporates Extron-patented Vector 4K seamless scaling technology specifically engineered for the most demanding applications. It features DisplayPort and HDMI inputs, HDMI output and Extron DTP2 extension to send video, audio, and control signals up to 330 feet (100 meters) over a shielded CATx cable. A built-in Extron IPCP Pro control processor and integrated 100 watt class D power amplifier make the IN1808 IPCP an all-in-one system design solution.

IN1608 xi IPCP

The Extron IN1608 xi IPCP is an HDCP-compliant scaling presentation switcher with four HDMI inputs, two universal analog video inputs, and two Extron DTP® inputs. It includes dual HDMI outputs, one DTP output, an integrated Class D audio power amplifier, and a built-in IPCP Pro control processor for complete AV system control. The DTP inputs and output work with DTP endpoints to extend video, audio, and bidirectional control signals. Each DTP transmitter/receiver link requires just a single shielded CATx cable. The DTP output is configurable for HDBaseT compatibility.

DTP CrossPoint 4K IPCP

The industry-leading Extron DTP CrossPoint® 4K IPCP is a definitive game-changer for 4K presentation systems. These highly versatile presentation matrix switchers deliver all of the technologically advanced capabilities necessary to design and integrate advanced AV systems in one box. They incorporate a matrix switcher with 4K inputs and outputs, built-in scalars that are powered by Extron Vector™ 4K scaling technology and support seamless switching, integrated DTP and XTP signal extension, comprehensive audio DSP and AEC capabilities unmatched in the industry, a high performance mono or stereo amplifier, and an advanced control processor for complete AV system control.

GLOBAL CONFIGURATOR PLUS AND GLOBAL CONFIGURATOR PROFESSIONAL

Global Configurator® is Extron's most powerful and versatile control system configuration software. It is designed to be used exclusively with Extron Pro Series Control products, including eBUS button panels, TouchLink Pro touchpanels, IP Link Pro control processors, and MediaLink Plus controllers. Powerful features, such as conditional logic, variables, and macros provide greater flexibility for more elaborate control system designs. Global Configurator has two modes. Global Configurator Plus is ideal for smaller applications requiring one control processor and one control interface. Global Configurator Professional is suited for applications requiring multiple control processors, enhanced functionality, and advanced configuration. Access to Global Configurator Professional requires an individual to successfully complete ECP Certification.

Features

- ▶ **Designed to be used exclusively with Extron Pro Series control systems**
- ▶ **Conditional logic** – Allows control operations to be contingent on a variety of separate conditions



- ▶ **Local variables** – Allows the user to emulate external feedback within the project
- ▶ **Supports systems using GlobalViewer Enterprise**
- ▶ **Create controller groups (Accessible from Global Configurator Professional mode only)**
- ▶ **Controller Swap** – Allows an already configured control processor to be changed to a different model
- ▶ **Library of enhanced Extron Certified device drivers**

GLOBALVIEWER ENTERPRISE

GlobalViewer® Enterprise - GVE software simplifies AV system resource management with intuitive control for hundreds of common AV tasks. Whether you're working with 5 or 5000 rooms, GVE provides a powerful, flexible way to manage, monitor, and control nearly any device over a standard network. Support teams will appreciate the agility and flexibility GVE provides to access usage data, create reports, and control the system from any computer on the network. The Help Desk view offers a look at the entire enterprise in a single window and access to detailed room data and control with just a click of a mouse.

Features

- ▶ **Easily manages all of the AV devices and meeting rooms across the campus and enterprise**
- ▶ **Track and analyze device and room usage, proactively plan maintenance activities, and maintain inventory lists using customizable reports**
- ▶ **Custom reporting tools** – Customize GVE data views from each room and device by displaying specific alerts, schedules, monitors, logs, or calendar events from within common web applications you already use.



- ▶ **Extron GlobalViewer Enterprise Commissioning with every installation ensures a trouble-free system installation and optimal performance**
- ▶ **Enhanced monitors and schedules based on location and device type**
- ▶ **Manage individual rooms using the room control terminal directly from the help desk**
- ▶ **Supports many common Web browsers** – GVE is installed on a Windows server and is accessible from anywhere on the network using Internet Explorer®, Firefox®, Safari®, and Google Chrome®

EXTRON CONTROL

Extron Control is an easy-to-use AV control system app that gives users complete access to Extron control systems directly from Apple iOS or Android devices. After a quick initial setup, your device connects to the desired room, allowing a seamless, highly-responsive control experience. Extron Control automatically loads the user interfaces present on any Extron control product without a lengthy setup and customization process. The familiar interfaces emulate the TouchLink touchpanel, eBUS button panel, Network Button Panel, or MediaLink controller in your room, and all button presses are kept in sync between the app and your Extron control devices. Extron Control is available for immediate download from the iTunes App Store and Google Play.

Features

- ▶ Provides a convenient point of control for Extron control systems using your Apple iOS or Android devices
- ▶ Extron Control for iOS supports all TouchLink, TouchLink Pro touchpanels, eBUS button panels, Network Button Panels, and Ethernet-enabled MediaLink, MediaLink Plus controllers
- ▶ Extron Control for Android supports all TouchLink Pro touchpanels, eBUS button panels, Network Button Panels, and all MediaLink Plus controllers
- ▶ Familiar user interface provides the same experience as the touchpanel, button panel, or controller
- ▶ Supports Extron LinkLicense
- ▶ Room Manager allows users to easily add control products and customize room lists

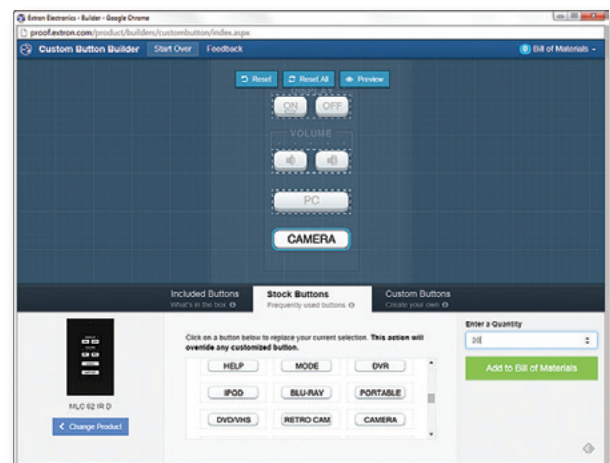


CUSTOM BUTTON BUILDER

The Extron Custom Button Builder enables convenient and simple customization of soft-touch, backlit buttons for a variety of Extron control products. This dynamic online tool allows individual button customization as well as graphical representations of whole product button layouts with many options for easy edits. The sign-off page provides a detailed order summary as well as graphical representations of all buttons ordered.

Features

- ▶ Customize text for individual buttons or entire products
- ▶ Easily change text for single or dual line buttons while adjusting font size and monitoring character count
- ▶ Choose from a wide variety of symbols, and mix and match symbols and text
- ▶ A running Bill of Materials keeps track of all buttons and generates a part number for easy reordering
- ▶ When finished, the sign-off page provides order details, part number, and graphical representations of the customized buttons



MOUNTING KITS

DWP 100 Series

Mounting Kits for Decorator-Style Modules

- Designed to mount in a one-, two-, or three-gang decorator-style products to a wall or other flat surface
- Accommodates one module per opening
- Includes wallplate and mud ring
- Available in black or white

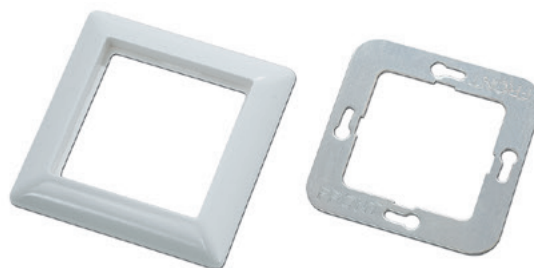


Model	Version Description	Part Number	Model	Version Description	Part Number
DWP 101	One-Gang, Black	70-1161-12	DWP 102	Two-Gang, White	70-1161-23
DWP 101	One-Gang, White	70-1161-13	DWP 103	Three-Gang, Black	70-1161-32
DWP 102	Two-Gang, Black	70-1161-22	DWP 103	Three-Gang, White	70-1161-33

Flex55 100 Mounting Kit Series

Mounting Kit for Flex55 Products

- Accommodates Extron Flex55 active and pass-through modules
- Designed to mount onto Flex55 products such as the EWB 212 external wall box
- Accommodates one Flex55 module per opening
- Available in a one- to four-gang frame
- Mounting hardware included
- Available in black or white

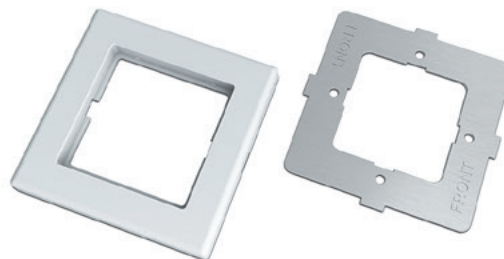


Model	Version Description	Part Number	Model	Version Description	Part Number
Flex55 101	1-gang Mounting Kit for Flex55 and EU Boxes, Black	70-1155-12	Flex55 103	3-gang Mounting Kit for Flex55 and EU Boxes, Black	70-1155-32
Flex55 101	1-gang Mounting Kit for Flex55 and EU Boxes, White	70-1155-13	Flex55 103	3-gang Mounting Kit for Flex55 and EU Boxes, White	70-1155-33
Flex55 102	2-gang Mounting Kit for Flex55 and EU Boxes, Black	70-1155-22	Flex55 104	4-gang Mounting Kit for Flex55 and EU Boxes, Black	70-1155-42
Flex55 102	2-gang Mounting Kit for Flex55 and EU Boxes, White	70-1155-23	Flex55 104	4-gang Mounting Kit for Flex55 and EU Boxes White	70-1155-43

MK 100 Mounting Kit Series

Mounting Kit for MK Junction Boxes and Enclosures

- Available in a one- and two-gang frames
- Designed to mount into MK junction boxes and enclosures for use in the UK, Middle East, Singapore, and the regions using MK-type enclosures
- Accommodates Extron 55mm modules
- Mounting hardware included
- Available in white



Model	Version Description	Part Number
MK 101	One-gang, white	70-897-13
MK 102	Two-gang, white	70-897-23
MK 103	Three-gang, white	70-897-33

EBDB & EBDB MINI

eBUS Distribution Hub

- Ten and four parallel eBUS ports provide a common connection point for multiple eBUS devices
- Front panel status LED indicates when power is present on one of the eBUS distribution ports
- Compact plastic enclosure with ZipClip® 200 mounting capability
- Compact, 1U enclosure can be easily mounted on a desk, in a podium, in a rack, or under furniture
- Mounts directly to Extron basic and universal rack shelf products or a variety of surfaces, including rack rails, tables, lecterns, projector poles, and table legs
- Ultra compact 2" x 2" enclosure can easily be mounted on a desk, in a podium, in a rack, or under furniture



EBDB



EBDB Mini

Model	Version Description	Part Number
EBDB	10 eBUS Ports	60-1170-01
EBDB MINI	Four eBUS Ports	60-1170-02

PS 1220EB

eBUS 12 VDC Power Supply and Distribution Hub

- Six parallel eBUS ports provide power and connections for multiple eBUS devices
- Energy-efficient 12 VDC, 24 watt power supply for low power consumption and reduced operating costs
- Plastic enclosure with ZipClip® 200 mounting capability
- Compact, rack-mountable 1U, one-quarter rack width enclosure requires little desktop or rack space
- Mounts directly to Extron basic and universal rack shelf products or a variety of surfaces, including rack rails, tables, lecterns, projector poles, and table legs
- Extron designed and engineered for increased durability and reliability
- Universal IEC input easily accepts international power cords
- US style Edison 6-foot detachable IEC power cord included
- CE and UL listed
- Worldwide compatibility, 100 VAC to 240 VAC, 50/60 Hz



Model	Version Description	Part Number
PS 1220EB	Power and Six eBUS Ports	70-988-01

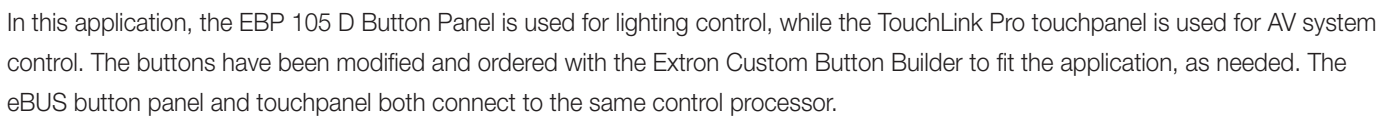
STP 20-2 Cable

Serial Control/Audio Cable

- Dual 20 AWG shielded twisted pairs with individual drain wires
- High performance cable for serial control/audio signals
- Plenum & Non-Plenum rated versions available
- SuperFlex jacket with sequential numbering
- RoHS compliant
- Spools of 1,000 feet (305 m) in self-dispensing box

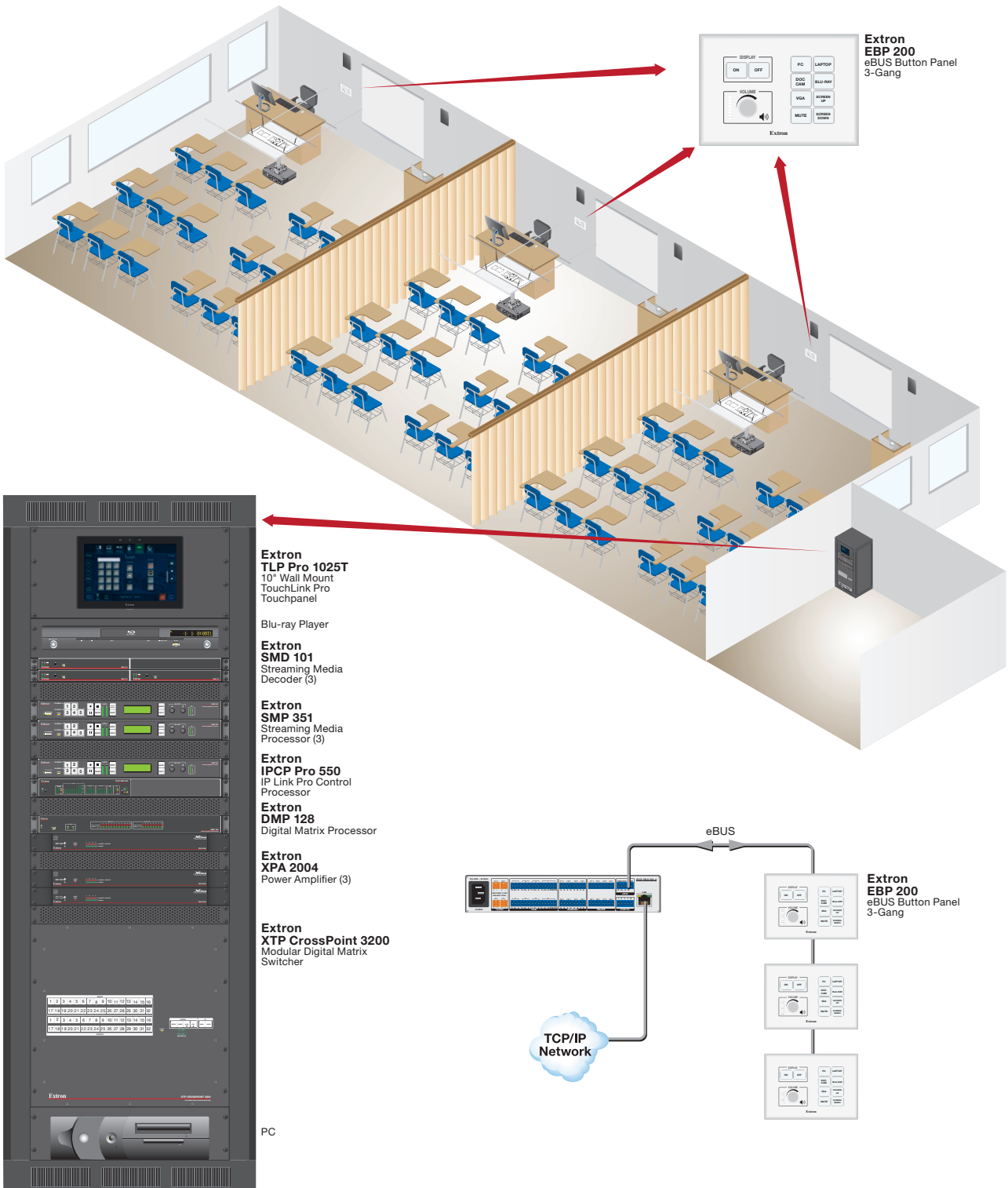


Model	Version Description	Part Number
STP20-2/1000 Cable	Non-Plenum 1000' (305 m) spool	22-161-03
STP20-2P/1000 Cable	Plenum 1000' (305 m) spool	22-163-03



EBP 200

In this divisible room application, three EBP 200 Button Panels are connected in a daisy chain off the eBUS port on an IPCP Pro 550 Control Processor and are used to control a variety of AV system functions. When the space is divided into individual rooms, each button panel is used to control the AV in its own room. When the rooms are combined, any one of the three button panels can be used to control the entire space, and all three button panels mirror each other.



SPECIFICATIONS

EBUS CONTROL INTERFACE	
eBUS control ports	(2) 3.5 mm captive screw connectors, 4 pole
eBUS pin configuration	+V = +12 VDC; +S = + signal; -S = - signal; G = ground
Recommended cable type	Extron STP20-2/1000 or STP20-2P/1000 cable
Maximum system cable length	1000 feet (305 meters) sum total for the eBUS system, regardless of topology. Power injection may be required depending on system cabling topology and primary power supply wattage. See the eBUS Technical Reference Guide or setup guides for details.
SOFTWARE AND CONTROL OPTIONS	
Configuration software	Extron Global Configurator® Plus and Professional
Programming software	Global Scripter®
Program control	Extron Control
Utilities	Toolbelt
GENERAL	
Power	Power is supplied by an eBUS enabled control processor or optional power supply
eBUS power consumption	
EBP 50, EBP 100, EBP 200	0.5 watt, 12 VDC
EBP Decorator Style (except the following)	1.5 watt, 12 VDC
EBP 103 D	0.5 watt, 12 VDC
EBP 111 D	2.5 watt, 12 VDC
EBP EU style (except the following)	1.5 watts, 12 VDC
EBP 104 EU	0.5 watt, 12 VDC
EBP MK style (except the following)	1.5 watt, 12 VDC
EBP 104 MK	0.5 watt, 12 VDC
EBP 1200C	2.0 watts, 12 VDC
Temperature/humidity	(All models) Storage: -40 to +158 °F (-40 to +70 °C) / 10% to 90%, noncondensing Operating: +32 to +122 °F (0 to +50 °C) / 10% to 90%, noncondensing
Thermal dissipation	
EBP 50	TBD BTU/hr
EBP 100, EBP 200	1.2 BTU/hr
EBP Decorator Style (except the following)	5.0 BTU/hr
EBP 103 D	TBD BTU/hr
EBP 105 D, EBP 110 D, EBP VC1 D, EBP VC2 D	4.2 BTU/hr
EBP 111 D	8.0 BTU/hr
EBP EU style (except the following)	5.0 BTU/hr
EBP 104 EU	TBD BTU/hr
EBP 105 EU, EBP 105P EU	4.1 BTU/hr
EBP 110 EU, EBP VC1 EU, EBP VC2 EU	4.2 BTU/hr
EBP MK style (except the following)	5.0 BTU/hr
EBP 104 MK	TBD BTU/hr
EBP 105 MK, EBP 105P MK	4.1 BTU/hr
EBP 110 MK, EBP VC1 MK, EBP VC2 MK	4.2 BTU/hr
EBP 1200C	6.3 BTU/hr

Mounting	
Rack mount	
EBP 50, EBP 100, EBP 200	No
Decorator-style models	No
EU models	Yes, with optional accessories
MK models	Yes, with optional accessories
Furniture or wall mount	
EBP 50	Yes, in a standard US 1-gang electrical junction box or mud ring.
EBP 100	Yes, in a standard US 2-gang electrical junction box or mud ring
EBP 200	Yes, in a standard US 3-gang electrical junction box or mud ring
Decorator-style models	Yes, in a standard US 1-gang electrical junction box or mud ring (except EBP 111 D).
EBP 111 D	Yes, in a standard US 2-gang electrical junction box or mud ring.
EU models	Yes, in a standard 1-gang EU electrical junction box or Flex55 frames and enclosures.
MK models	Yes, in a standard 1-gang MK electrical junction box
EBP 1200C	Furniture mount: min/max table thickness 0.5" to 2.5" (13 to 64 mm)
Enclosure type	
All models except EBP 1200C	Plastic faceplate, metal mounting plate
EBP 1200C	Metal
Product weight	
EBP 50	0.3 lb (0.1 kg)
EBP 100	0.5 lb (0.2 kg)
EBP 200	0.7 lb (0.3 kg)
Decorator-style models	0.2 lb (0.1 kg) (except EBP 111 D)
EBP 111 D	0.3 lb (0.1 kg)
EU and MK models	0.2 lb (0.1 kg)
EBP 1200C	2.3 lb (1.0 kg)
Regulatory compliance	
Safety	CE, c-UL*, UL*
EM/EMC	CE, C-tick, FCC Class A, ICES, VCCI class A
Environmental	Complies with the appropriate requirements of RoHS, WEEE
Accessibility	Complies with the appropriate requirements of Section 508 of the Rehabilitation Act (29 U.S.C. 794d).
Product warranty	3 years parts and labor
NOTE: *The UL listing for the EBP 1200C is only valid when the Cable Cubby contains the optional Extron US AC power module.	
NOTE: All nominal levels are at ±10%.	

For complete specifications, please go to www.extron.com
Specifications are subject to change without notice.

WORLDWIDE SALES OFFICES

Anaheim • Raleigh • Silicon Valley • Dallas • New York • Washington, DC • Toronto • Mexico City • Paris
London • Frankfurt • Madrid • Stockholm • Amersfoort • Moscow • Dubai • Johannesburg • Tel Aviv • Sydney
Melbourne • Bangalore • Mumbai • New Delhi • Singapore • Seoul • Shanghai • Beijing • Hong Kong • Tokyo

www.extron.com