

Cable Cubby F55 • Installation Guide

IMPORTANT:
Go to www.extron.com for the complete user guide, installation instructions, and specifications before connecting the product to the power source.

This guide provides instructions for an experienced technician to install and connect the Extron Cable Cubby F55.

The Cable Cubby F55 is a lift-up cable access, furniture mountable enclosure for AV connectivity, remote control, and power. The lid lifts up to expose the connectivity interface at a comfortable and ergonomic angle. When closed, the Cable Cubby is nearly flush with the table surface.



Planning the Installation

Check with local and state regulations before starting the installation

- Ensure that the planned installation complies with national and local building and electrical codes.
- Ensure that the planned installation complies with the Americans with Disabilities Act or other accessibility requirements.

Check All Parts and Equipment

- Ensure that all parts are present in each kit.
- Ensure that necessary tools and equipment are available for the installation.

Kit contents

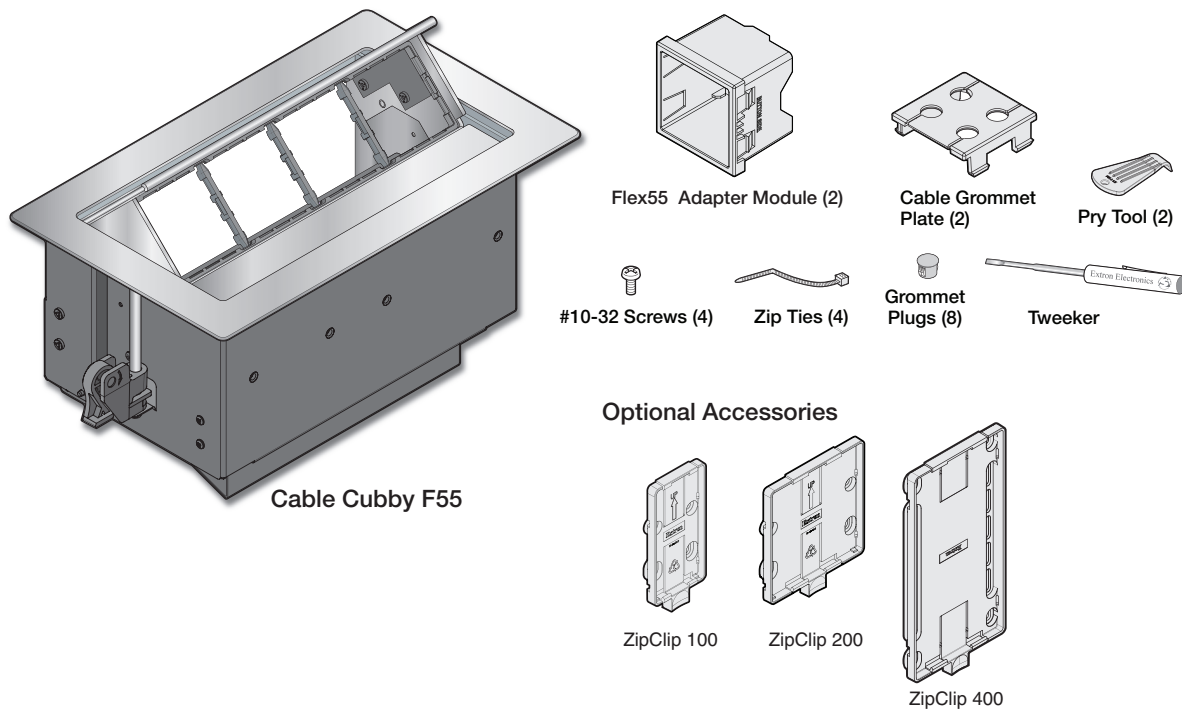


Figure 1. Cable Cubby F55 Kit Contents

Cable Cubby F55 • Installation Guide (Continued)

Application diagram

The application diagram below shows a power, data, and video wiring setup from a laptop to a conference monitor.

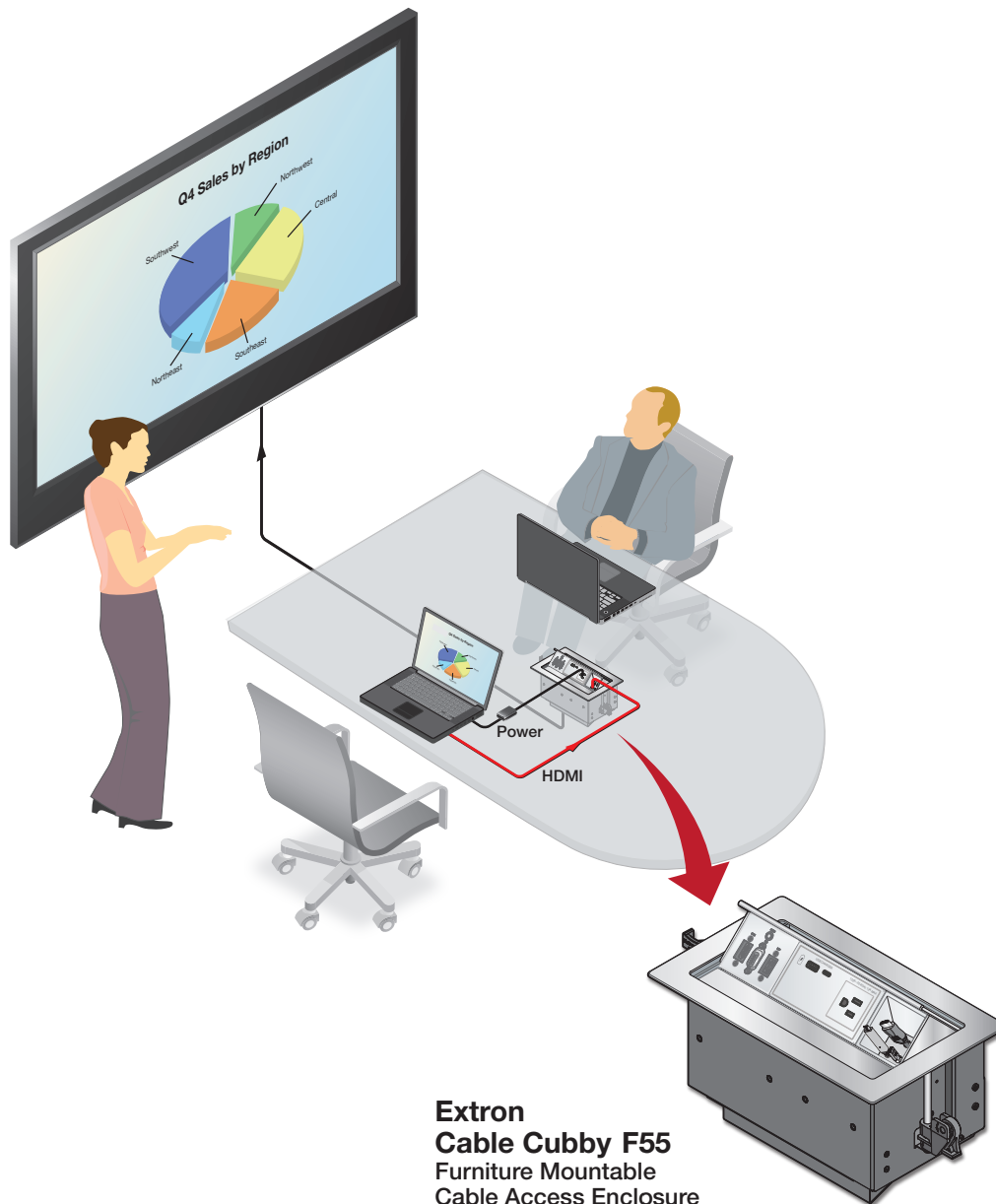


Figure 2. Application Example Using the Cable Cubby F55 Enclosure

Preparing the Table

Determine the Best Location for the Enclosure

- Ensure that the location where the Cable Cubby is to be installed is convenient for as many users as possible.
- Ensure that the edge on which the lid opens is oriented correctly.
- Ensure that there is ample space under the table for cables. Allow at least 36 inches of cable loop for each cable (see [Routing and Managing Cables](#) on page 8).

CAUTION: The flanged edges of the top of the surface enclosure are sharp. These edges are also soft and may be easily nicked or bent. Exercise caution when handling the enclosure to prevent personal injury or damage to the enclosure.

ATTENTION : Les extrémités à brides du haut de la surface du boîtier sont aiguisées. Ces extrémités sont aussi lisses et peuvent facilement être coupées ou pliées. Soyez prudents lorsque vous manipulez le boîtier afin d'éviter de l'endommager ou de vous blesser.

Cut a Hole in the Table

Read the following information **before** making a cut in the table.

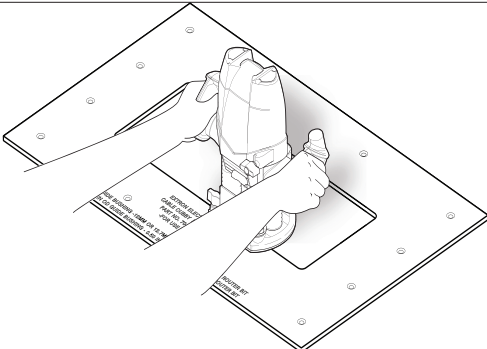
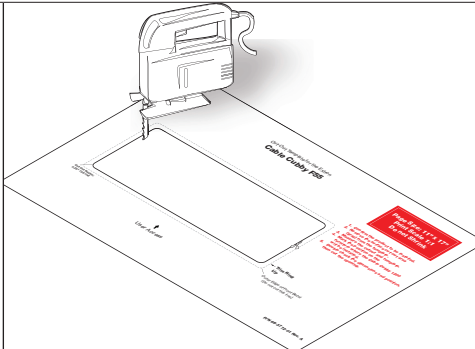
CAUTION: Wear safety glasses when operating power equipment. Failure to comply can result in eye injury.

ATTENTION : Portez des lunettes de sécurité lorsque vous utilisez l'équipement électrique. Ne pas respecter cela peut conduire à une blessure à l'oeil.

ATTENTION: The opening in the table for the Cable Cubby should be cut only by licensed and bonded craftspeople. Exercise care to prevent scarring or damaging the furniture.

ATTENTION : L'ouverture dans la table pour le Cable Cubby devrait être coupée seulement par des artisans autorisés et qualifiés. Faites attention à ne pas faire de marques sur le meuble et à ne pas l'endommager.

1. Choose one of the following methods for cutting the hole:

| Hand Router and Routing Template | Jigsaw and Paper Cut-Out Template | CNC Wood Router | | | | | | | | |
|--|---|---|--|--------------------|--|-------------------|----------------|------------------------|--------------------|-------------------|
|  |  | If using a CNC wood router or other precise machinery, use the exact cut-out dimensions (see the table below). | | | | | | | | |
| Go to www.extron.com for routing template part numbers and instructions. | Dimensions and cut-out templates are available online at www.extron.com . | <table><tr><th rowspan="2"></th><th colspan="2">Cut-out Dimensions</th></tr><tr><th>User Access Width</th><th>Side Dimension</th></tr><tr><td>Cable Cubby F55</td><td>10.50" (267 mm)</td><td>6.00" (152 mm)</td></tr></table> | | Cut-out Dimensions | | User Access Width | Side Dimension | Cable Cubby F55 | 10.50" (267 mm) | 6.00" (152 mm) |
| | Cut-out Dimensions | | | | | | | | | |
| | User Access Width | Side Dimension | | | | | | | | |
| Cable Cubby F55 | 10.50" (267 mm) | 6.00" (152 mm) | | | | | | | | |

2. Measure and cut the hole in the surface where the enclosure will be installed.

Installing the Modules into the Cable Cubby F55 Enclosure

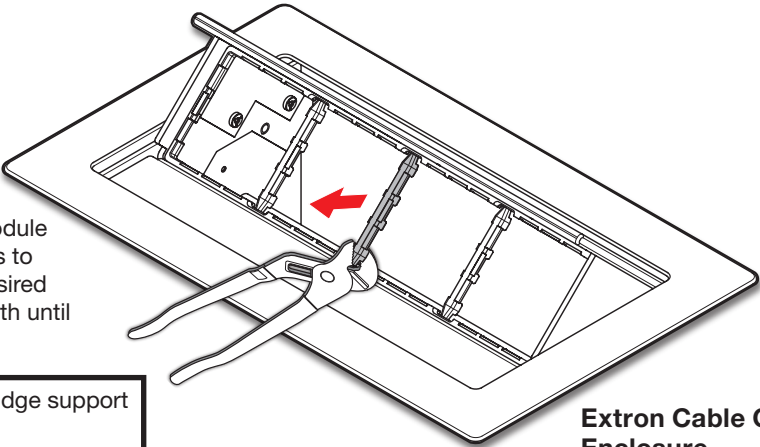
The Cable Cubby F55 enclosure supports Flex55 and EU modules, which can be installed in a variety of combinations. These modules can be installed either before or after the Cable Cubby F55 installation, in any slot of the enclosure. Determine where the connectivity modules and power module will be installed in the enclosure.

NOTE: For a complete and up-to-date list of compatible modules, see the product page at www.extron.com.

Figure 3 shows the process for removing the supports in order to install a double-size module, such as the Flex55 AC+USB 130 US Power Module, into the Cable Cubby F55 enclosure. Half- and full-size modules can be snapped into the enclosure without removing the supports (1).

1 For a double-size module installation, use pliers to carefully twist the desired support back and forth until loose, and remove.

NOTE: Removal of a bridge support is irreversible.



Extron Cable Cubby F55 Enclosure

Figure 3. Removing a Support for a Double-sized Flex55 Module Installation

2 Install the cable grommet plate for cable pass-through applications.

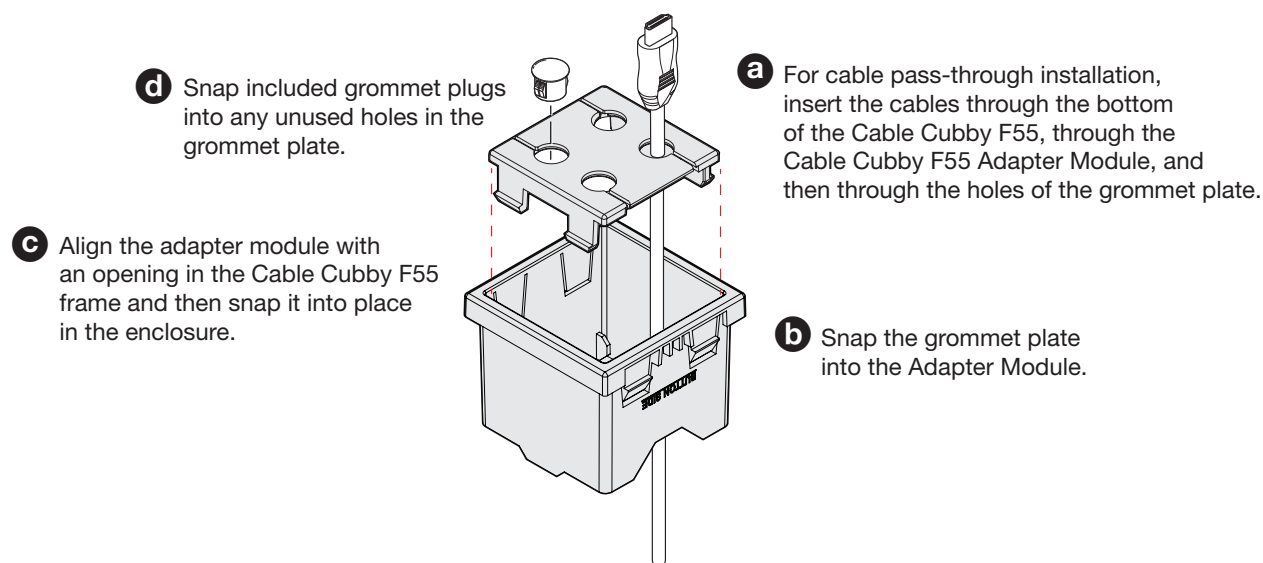


Figure 4. Setting Up the Cable Grommet Plate

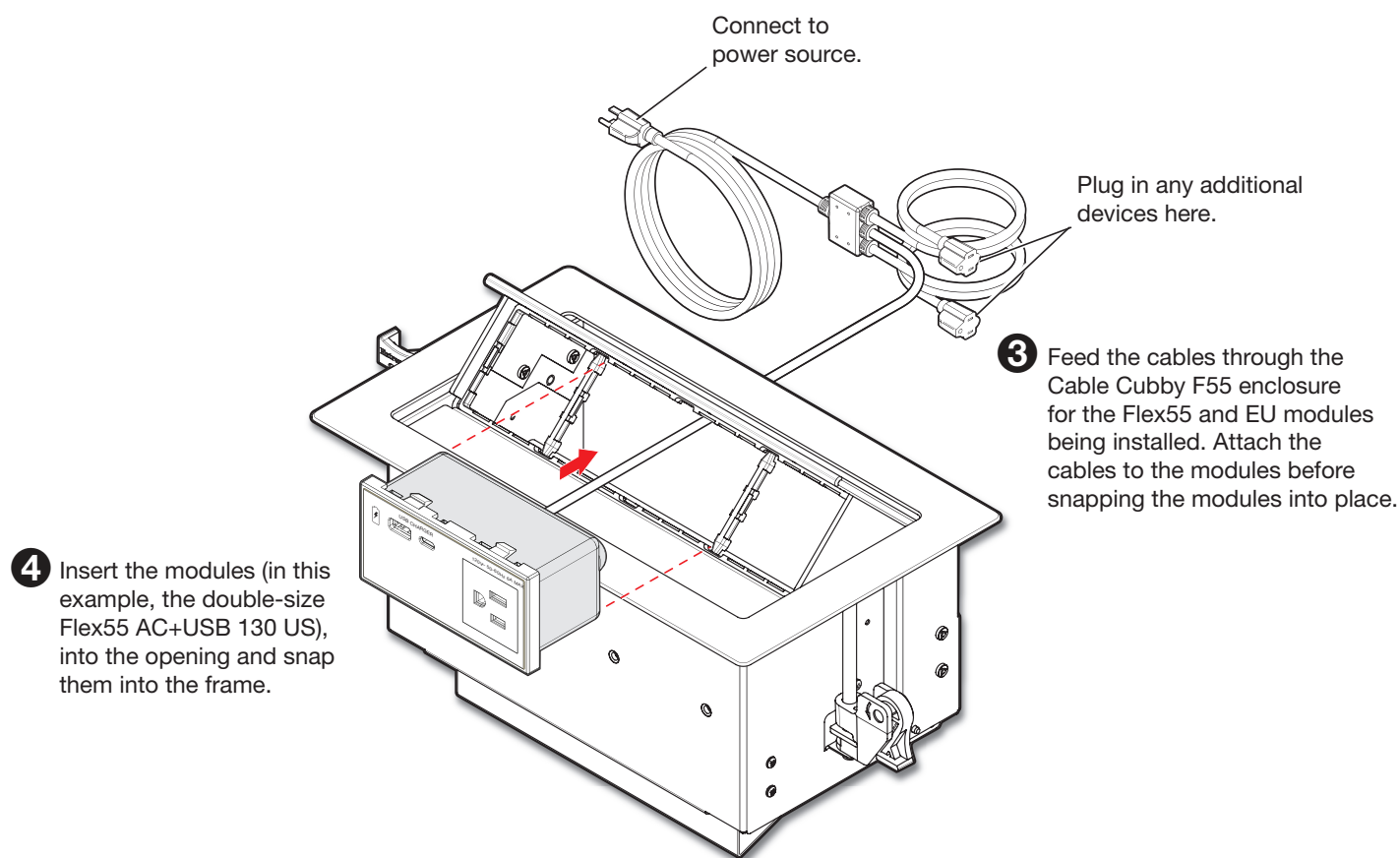


Figure 5. Installing Flex55 and EU Modules into the Cable Cubby F55 Enclosure

Cable Cubby F55 • Installation Guide (Continued)

Attaching an Optional ZipClip Mounting Device to the Cable Cubby F55

The ZipClip 100, 200, or 400 can be attached to the Cable Cubby F55 with the included #10-32 screws, in order to mount a power supply or other device to the enclosure. Determine which ZipClip to use, and ensure there is ample space for the device and its cables.

NOTE: All ZipClips must be mounted with **horizontal** orientation.

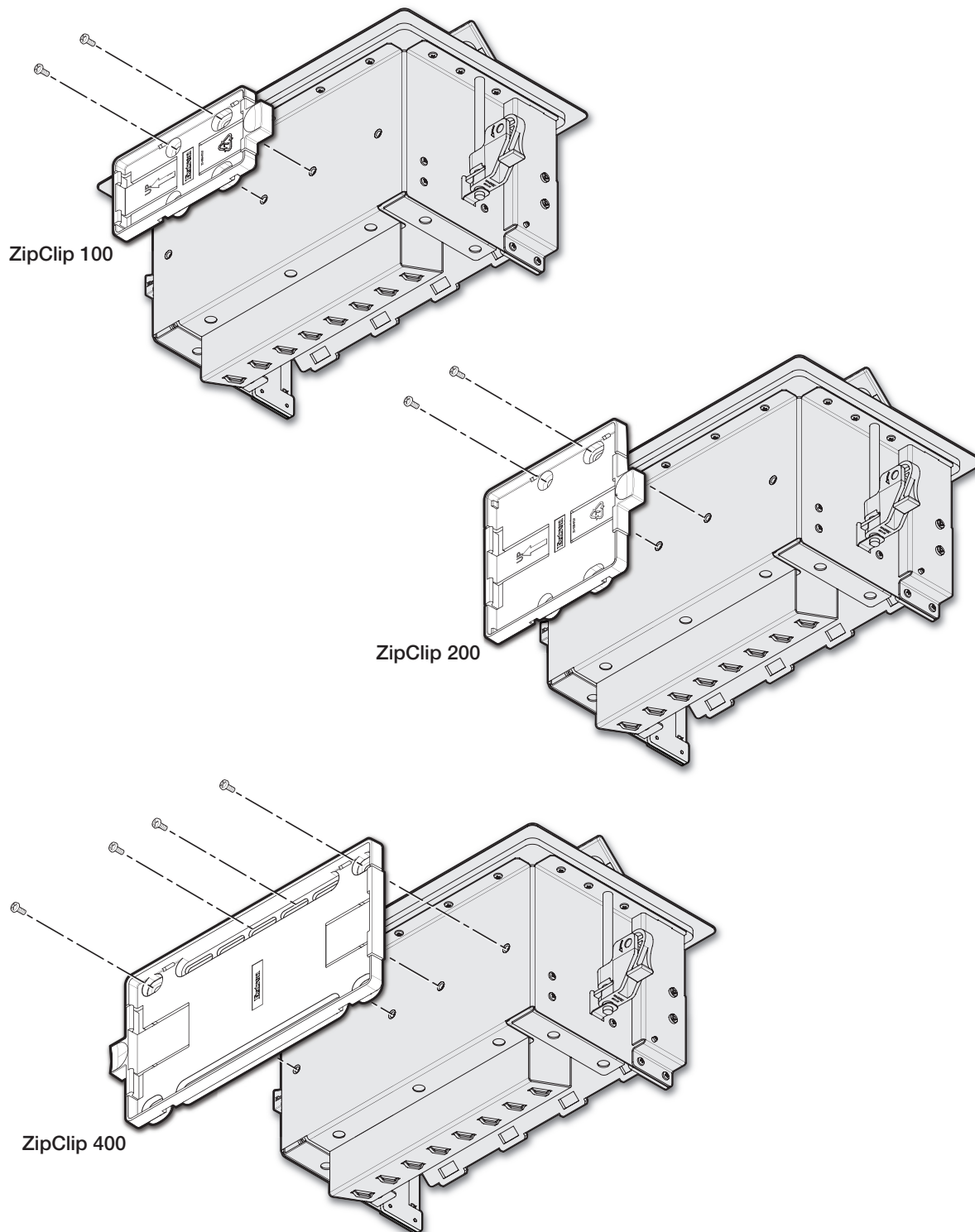


Figure 6. Mounting a ZipClip to the Cable Cubby F55 Enclosure

Cable Cubby F55 • Installation Guide (Continued)

Mounting the Cable Cubby F55 in the Table

Step 1 — Mount the Cable Cubby Flush with the Table

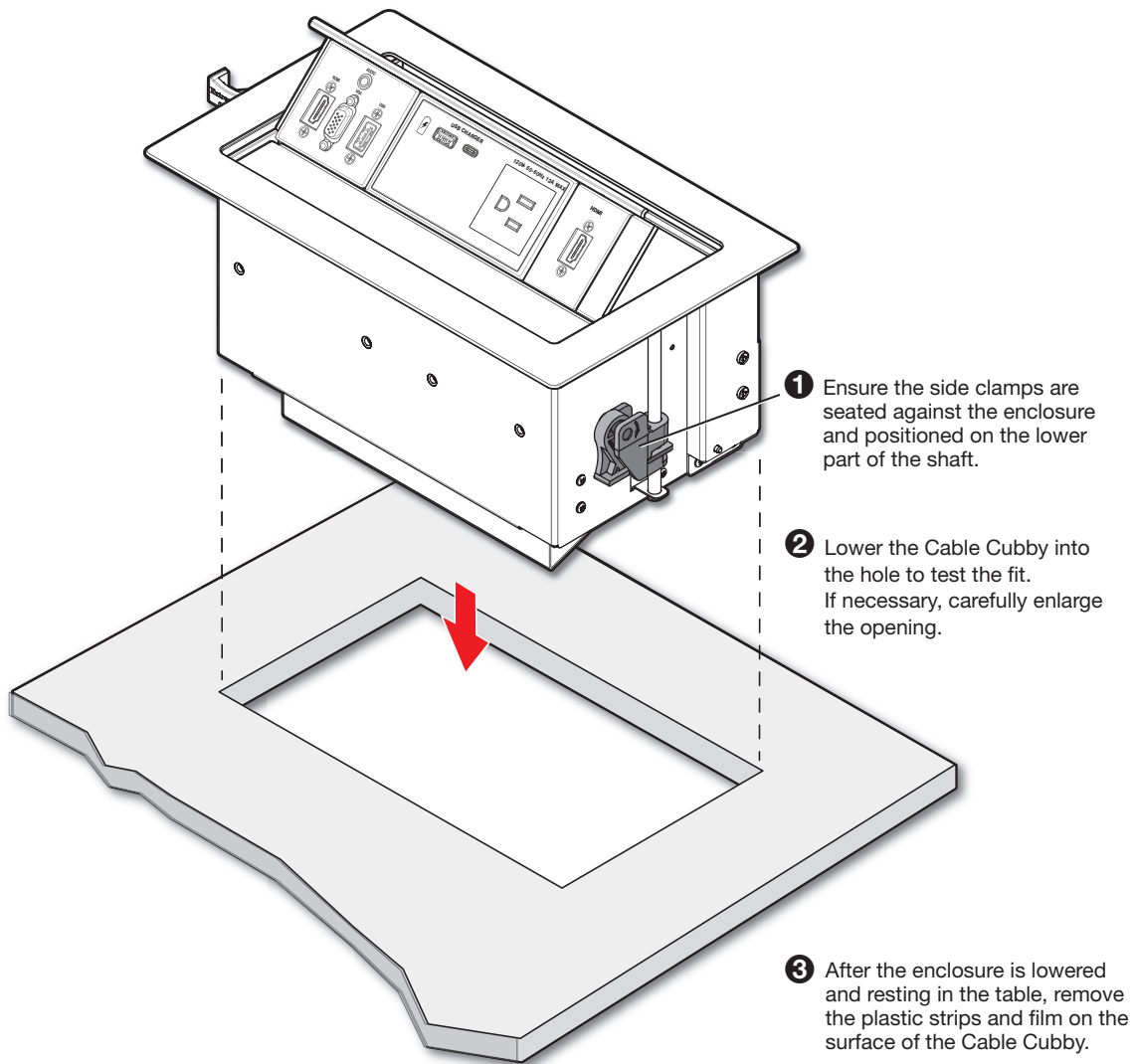


Figure 7. Mounting the Cable Cubby F55 to a Table

Cable Cubby F55 • Installation Guide (Continued)

Step 2 – Under the Table, Adjust the Side Clamps on the Enclosure

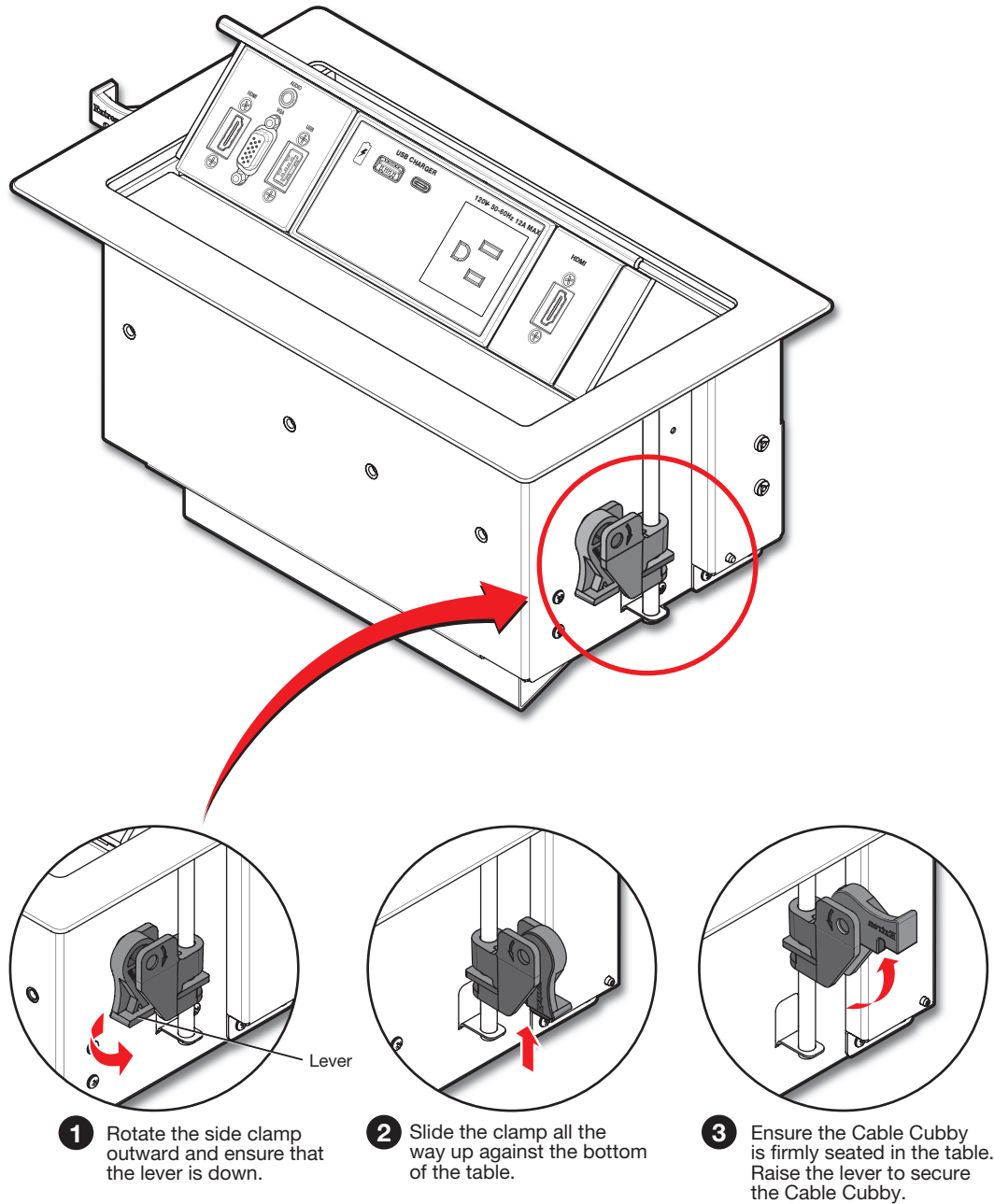


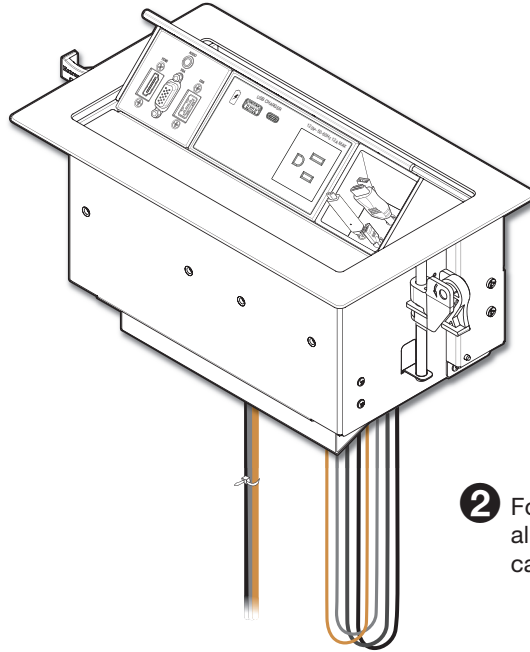
Figure 8. Adjusting and Securing the Side Clamps

Cable Cubby F55 • Installation Guide (Continued)

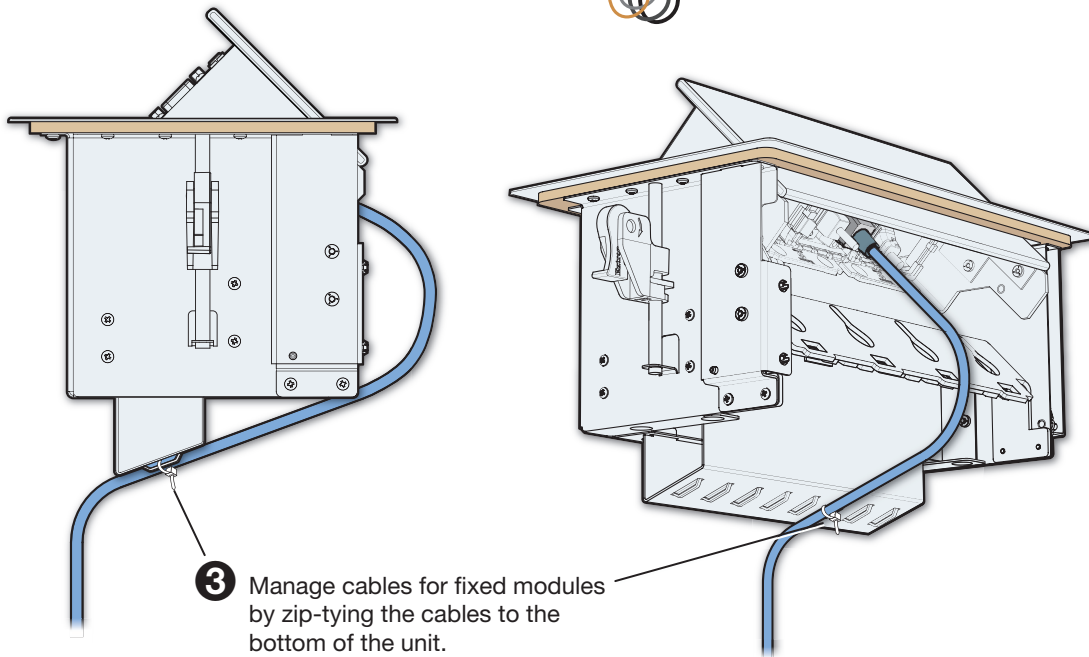
Routing and Managing Cables

Organize and connect cables as shown in figure 8. Use zip ties (provided) to fasten the cables to the enclosure where needed.

- 1 Manage the cables with the lid in the fully open position.



- 2 For cable pass-through applications, allow at least 36 inches (914 mm) of cable loop for each cable.



- 3 Manage cables for fixed modules by zip-tying the cables to the bottom of the unit. Give a generous cable loop to allow the lid to open and close without restrictions.

- 4 Raise and lower the lid again after cabling is installed to ensure the lid operates as desired. Provide more loop in the cabling if necessary and re-secure to the enclosure.

Figure 9. Routing and Managing the Cables

Cable Cubby F55 • Installation Guide (Continued)

Appendix

Removing Flex55 and EU Modules from the Cable Cubby F55

If the modules need to be replaced or removed from the Cable Cubby F55 enclosure, the following diagrams show the procedure for removing modules with the provided pry tools. This process applies to any compatible Flex55 and EU module.

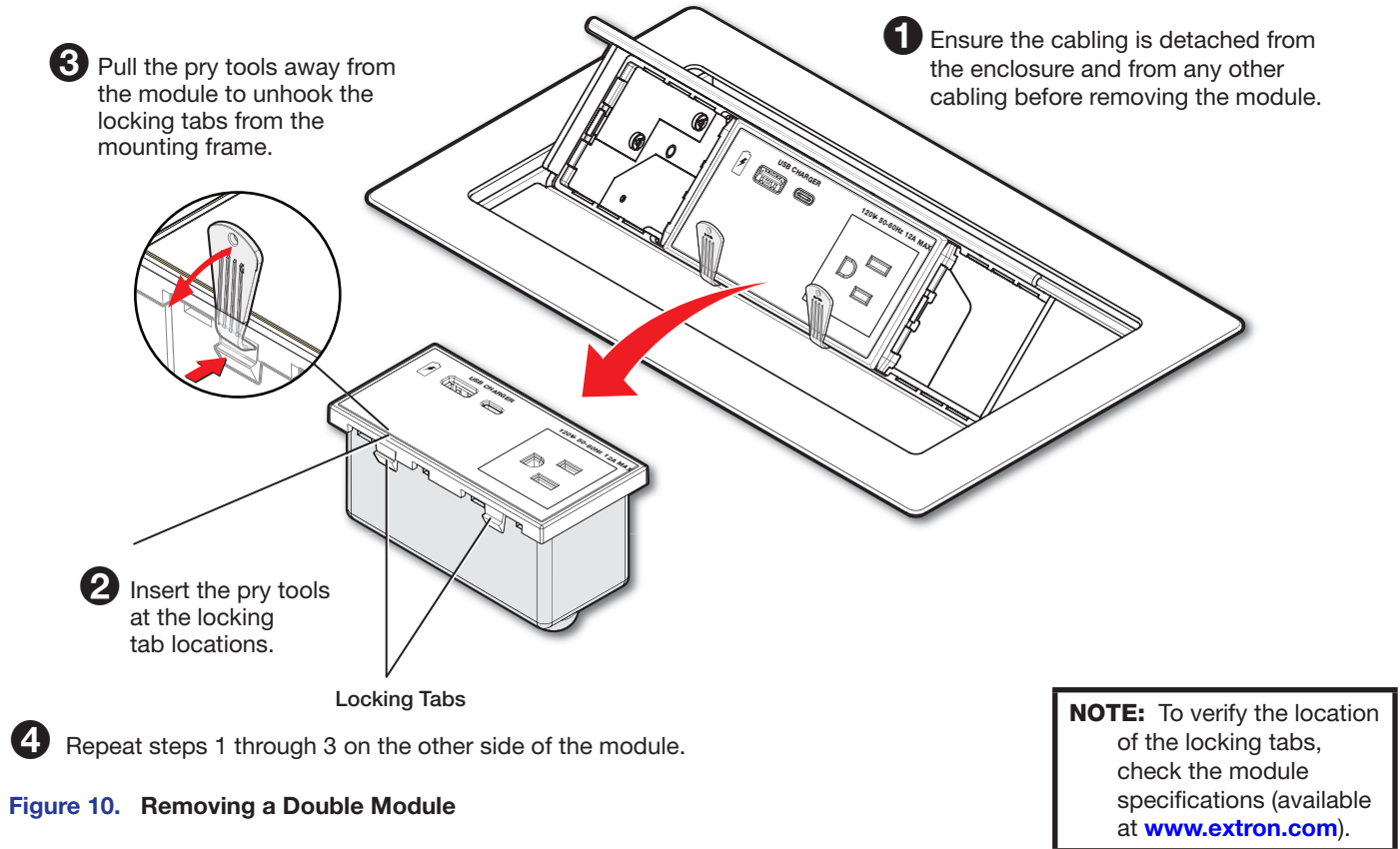


Figure 10. Removing a Double Module

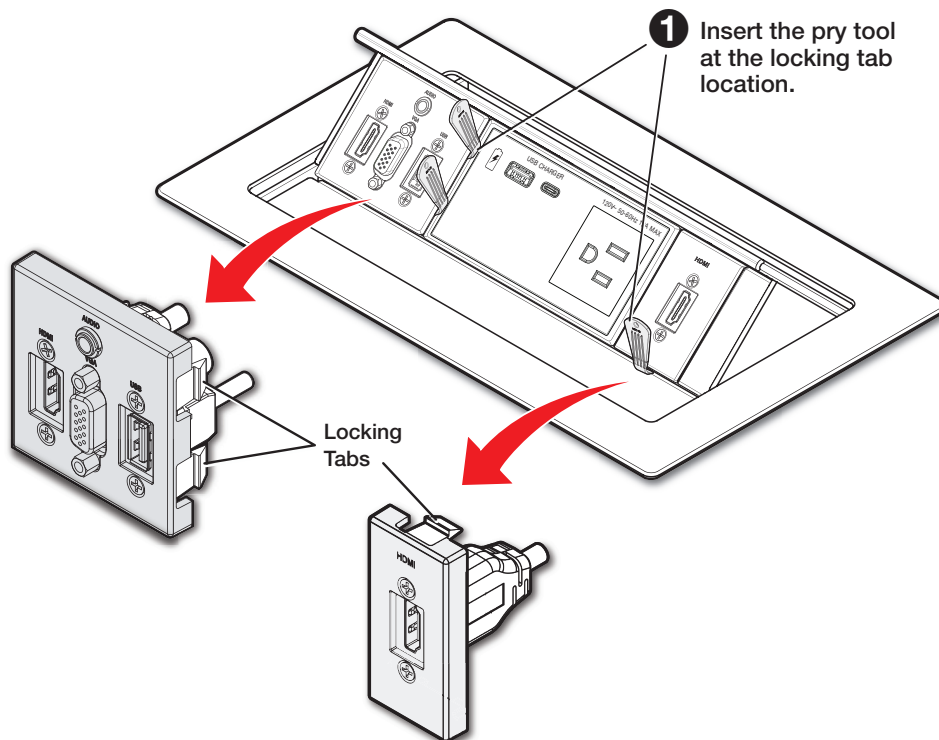


Figure 11. Removing Flex55 and EU Modules

Cable Cubby F55 • Installation Guide (Continued)

Removing the Enclosure from the Table

To remove the Cable Cubby F55 enclosure from its mounting location in the table, release the side clamps as shown below:

NOTE: When the clamps cannot be loosened by hand, an Extron Tweezer or other small screwdriver may be necessary to help with leverage.

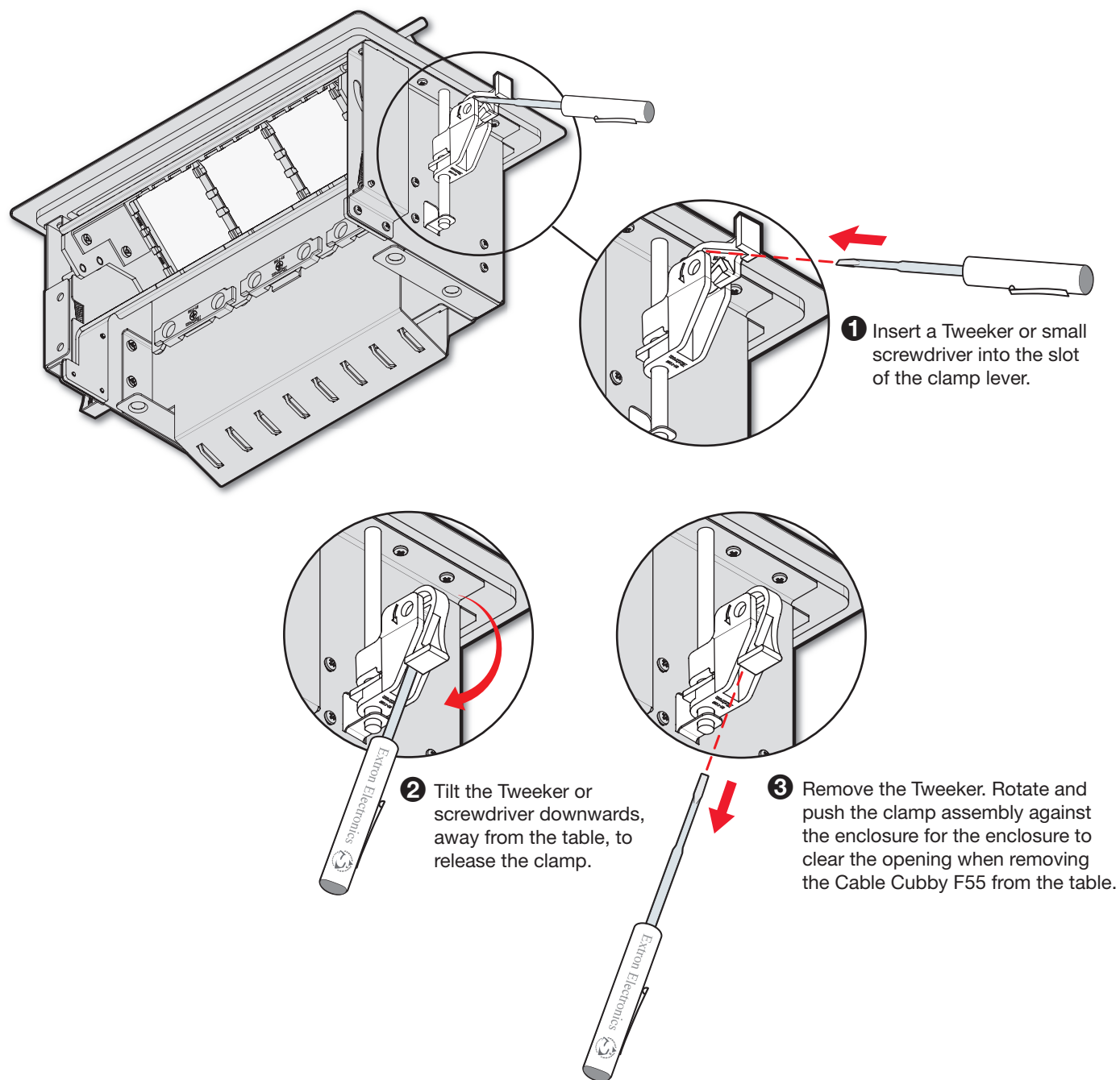


Figure 12. Removing the Cable Cubby F55 Enclosure from the Table

Installation Overview

1. Plan the installation (see page 1).

- Check with local and state regulations before starting the installation.
- Check all parts and equipment before installation.

2. Prepare the table (see page 2).

- Determine the best location for the enclosure.
- Choose a method for cutting the hole in the table.

3. Install the modules into the Cable Cubby F55 enclosure (see page 3).

- Check the modules for compatibility and installation requirements.
- Remove bridge supports if necessary to accommodate a double-sized module. **Note that removal of bridge supports is irreversible.**
- Cable and install half-, single- and double-size modules into the Cable Cubby F55.

4. (Optional) Attach a ZipClip mounting device to the Cable Cubby F55 (see page 5).

- **If using a ZipClip**, determine which model to use (100, 200, or 400). Plan and ensure there is ample space for the device and its cables.
- Attach the ZipClip to the Cable Cubby F55.
- Attach the desired power supply or other device to the ZipClip.

5. Mount the Cable Cubby F55 in the table (see page 6).

- Seat the clamps against the enclosure and in the lowest position.
- Drop the enclosure into the cut opening.
- Remove the plastic strip and film.
- Under the table, adjust the side clamps on the enclosure, and secure it to the table.

6. Route and manage the cables (see page 8).

- Organize and connect the cables. For cable pass-through applications, allow at least 36 inches (1 meter) of cable loop.
- With the lid open, allow sufficient cable loop. Use tie wraps to attach cables to the enclosure where needed.
- Raise and lower the lid to ensure it operates as desired.

For information on safety guidelines, regulatory compliances, EMI/EMF compatibility, accessibility, and related topics, see the [Extron Safety and Regulatory Compliance Guide](#) on the Extron website.