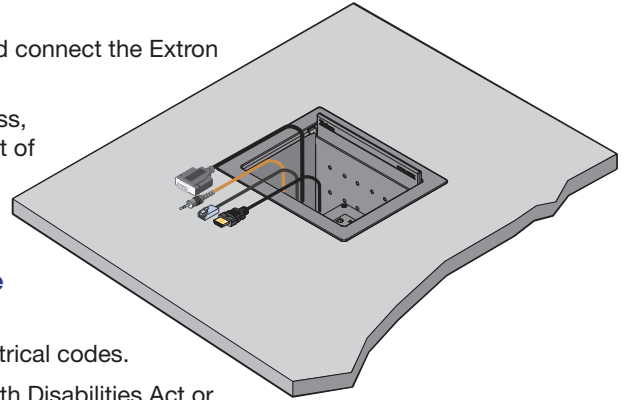


## Cable Cubby 500 and 700 • Installation Guide

**IMPORTANT:**  
Go to [www.extron.com](http://www.extron.com) for the complete user guide, installation instructions, and specifications before connecting the product to the power source.

This guide provides instructions for an experienced installer to install and connect the Extron Cable Cubby 500 and 700 Cable Access Enclosures.

The Cable Cubby units are furniture-mounted enclosures for cable access, connections, and AC power. Cables that are not in use can be stored out of the way while remaining connected to the presentation system.



### Planning

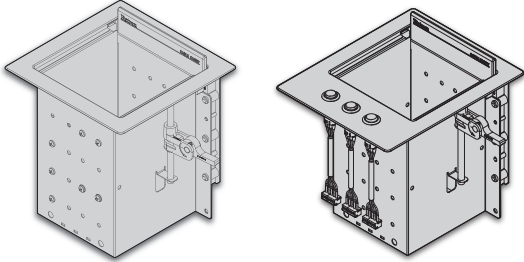
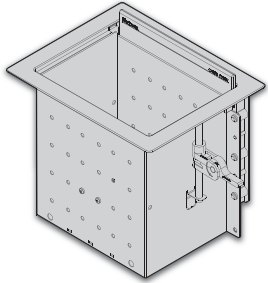
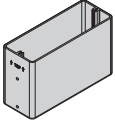

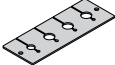


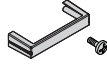
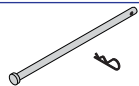

#### Check with local and state regulations before starting the installation:

- ☐ Ensure that the planned installation complies with building and electrical codes.
- ☐ Ensure that the planned installation complies with the Americans with Disabilities Act or other accessibility requirements.

#### Check all parts and equipment before installation:

- ☐ Ensure that all parts are present in each kit.
- ☐ Ensure that necessary tools and equipment are available for the installation.

### Kit Contents

	 Cable Cubby 500 and Cable Cubby 500 CCB	 Cable Cubby 700
 Connectivity Bracket	1	2
 #6 Mounting Screws and Star Washers	2	4
 Cable Grommet Plate	1	2
 Cable Frame Plate	1	2
 Zip Ties	(3) 3/8", (1) 1/4"	(6) 3/8", (2) 1/4"
 Retractor Trim and Screws	1 trim, 2 screws	2 trims, 4 screws
 Retractor Pin and Clip	1	2
 Hole Plugs	4	8

# Cable Cubby 500 and 700 • Installation Guide (Continued)

## Preparing the Table

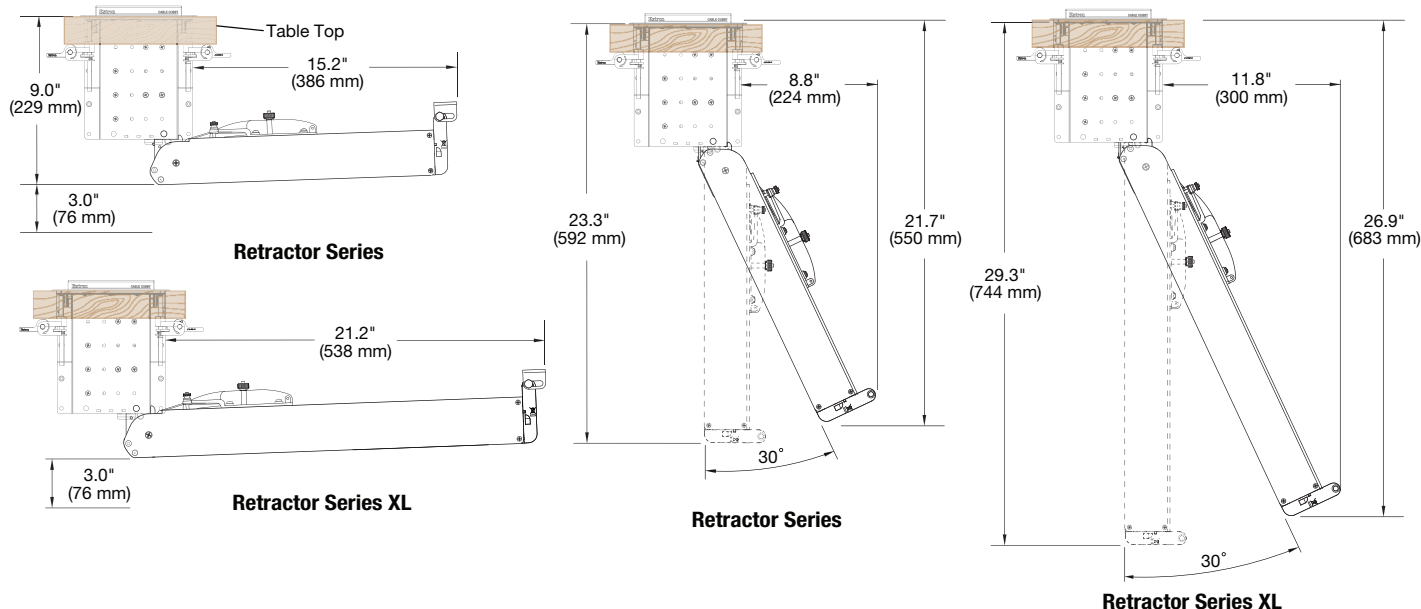
Cut a hole in the surface where the enclosure will be installed. Read the following information before making a cut.

### Determine the best location for the enclosure

- Ensure that the location where the Cable Cubby is to be installed is convenient for as many users as possible.
- Ensure that the edge on which the lid opens is oriented correctly.
- Ensure that there is ample space under the table for cables.
- When installing Retractors in the Cable Cubby, ensure that there is enough space for the Retractor assembly under the table or furniture (see dimensions for the Retractors below).

#### NOTES:

- To prevent objects from impeding cable retraction, allow at least 3 inches of clearance from the exposed cable side of the enclosure (see the diagrams below).
- Excess cabling may cause clearance issues. Use zip ties to secure under-table cabling to prevent accidental contact or entanglement (see [Routing and Connecting Cables](#) on page 6).



### Choose a method for cutting the hole in the table

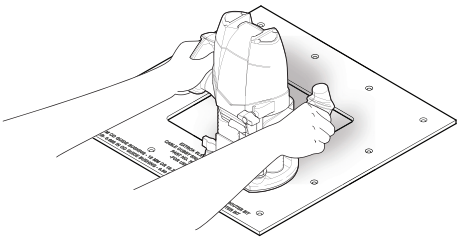
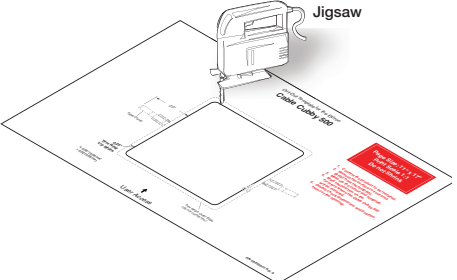
#### ATTENTION:

- The opening in the table for the Cable Cubby should be cut only by licensed and bonded craftspeople. Exercise care to prevent scarring or damaging the furniture.
- L'ouverture dans la table pour le Cable Cubby devrait être coupée seulement par des artisans autorisés et qualifiés. Faites attention à ne pas faire de marques sur le meuble et à ne pas l'endommager.

**CAUTION:** Wear safety glasses when operating power equipment. Failure to comply can result in eye injury.

**ATTENTION:** Portez des lunettes de sécurité lorsque vous utilisez l'équipement électrique. Ne pas respecter cela peut conduire à une blessure à l'oeil.

Choose one of the following methods for cutting the hole:

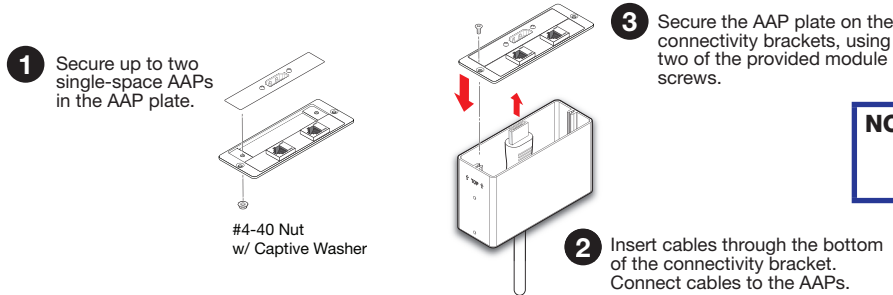
Hand Router and Routing Template	Jigsaw and Paper Cut-Out Template	CNC Wood Router														
		If using a CNC wood router or other precise machinery, use the exact cut-out dimensions for your model (see the table below).														
Visit <a href="http://www.extron.com">www.extron.com</a> for Cable Cubby routing template part numbers and instructions.	Dimensions and cut-out templates are available online at <a href="http://www.extron.com">www.extron.com</a> .	<table><tr><th rowspan="2">Cable Cubby Model</th><th colspan="2">Cut-out Dimensions</th></tr><tr><th>User Access Width</th><th>Side Dimension</th></tr><tr><td>500</td><td>5.75" (14.6 cm)</td><td>5.75" (14.6 cm)</td></tr><tr><td>700</td><td>7.125" (18.1 cm)</td><td>5.75" (14.6 cm)</td></tr><tr><td>500 CCB</td><td>5.75" (14.6 cm)</td><td>7.125" (18.1 cm)</td></tr></table>	Cable Cubby Model	Cut-out Dimensions		User Access Width	Side Dimension	500	5.75" (14.6 cm)	5.75" (14.6 cm)	700	7.125" (18.1 cm)	5.75" (14.6 cm)	500 CCB	5.75" (14.6 cm)	7.125" (18.1 cm)
Cable Cubby Model	Cut-out Dimensions															
	User Access Width	Side Dimension														
500	5.75" (14.6 cm)	5.75" (14.6 cm)														
700	7.125" (18.1 cm)	5.75" (14.6 cm)														
500 CCB	5.75" (14.6 cm)	7.125" (18.1 cm)														

## Preparing the Cable Cubby

### Step 1 — Assemble the connectivity modules of your choice.

Connectivity modules allow you to populate the Cable Cubby with a combination of AAPs, cable pass-throughs, or Retractors.

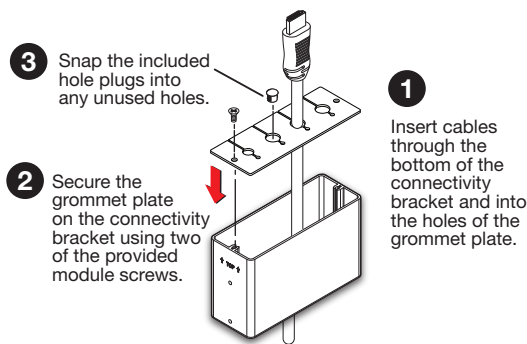
#### AAP Module



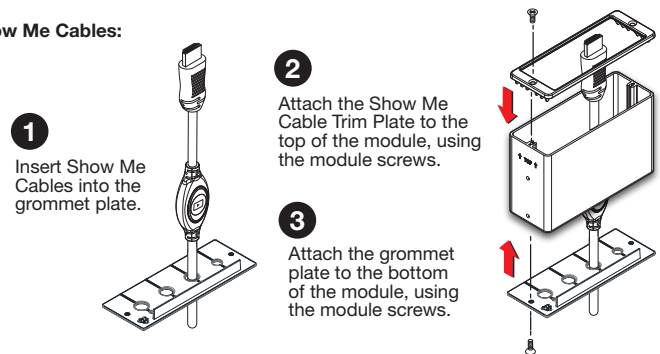
**NOTE:** After assembling the module, proceed to “Step 2 — Install the modules.”

#### Cable Pass-Through Module

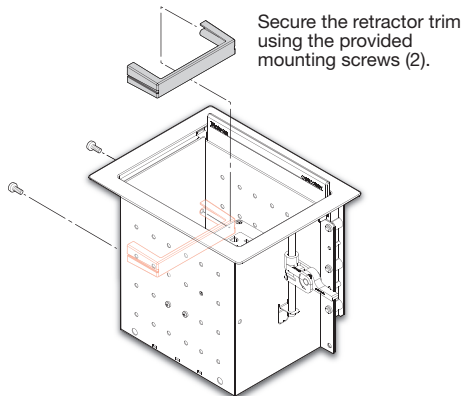
**NOTE:** After assembling the module, proceed to “Step 2 — Install the modules.”



For Show Me Cables:



#### Retractor Trim



**NOTE:**

- Use a screwdriver to secure the Retractor trim with the screws.
- After installing the trim, proceed to “Step 2 — Install the modules” to install the power module.
- Retractors are installed after the Cable Cubby is mounted on the table (see [Installing Retractors](#) on page 5).

### Step 2 — Install the modules

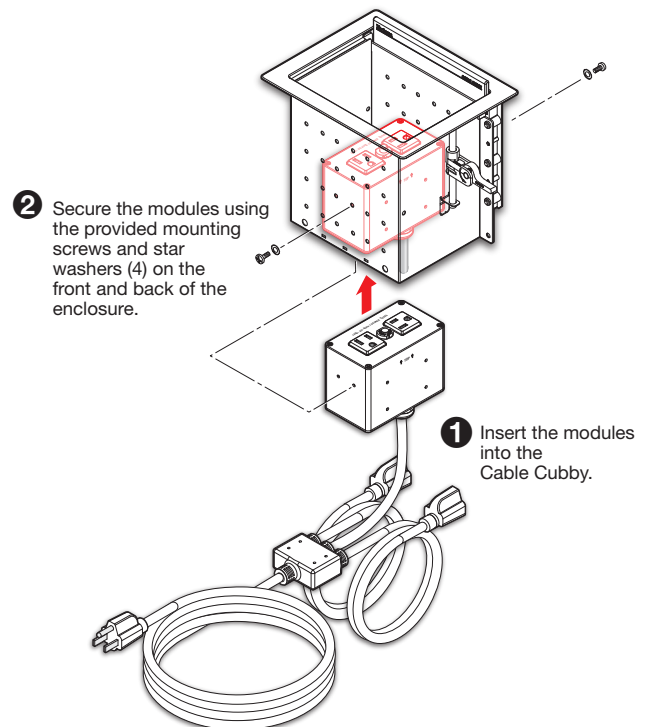
Determine where the connectivity modules and power module will be installed in the Cable Cubby. The modules may be installed at various heights.

**NOTE:**

- Ensure that there is enough room above the modules for the Cable Cubby lid to close completely.
- Use a screwdriver to secure the modules with the screws.

**WARNING:** Risk of Electric Shock. To ensure proper electrical grounding, use the provided #6-32 mounting screws with the star washers.

**AVERTISSEMENT:** Risque de choc électrique. Afin d'assurer une mise à la terre correcte, utilisez les fixations de mise à la terre #6-32 et les rondelles en étoile fournies.



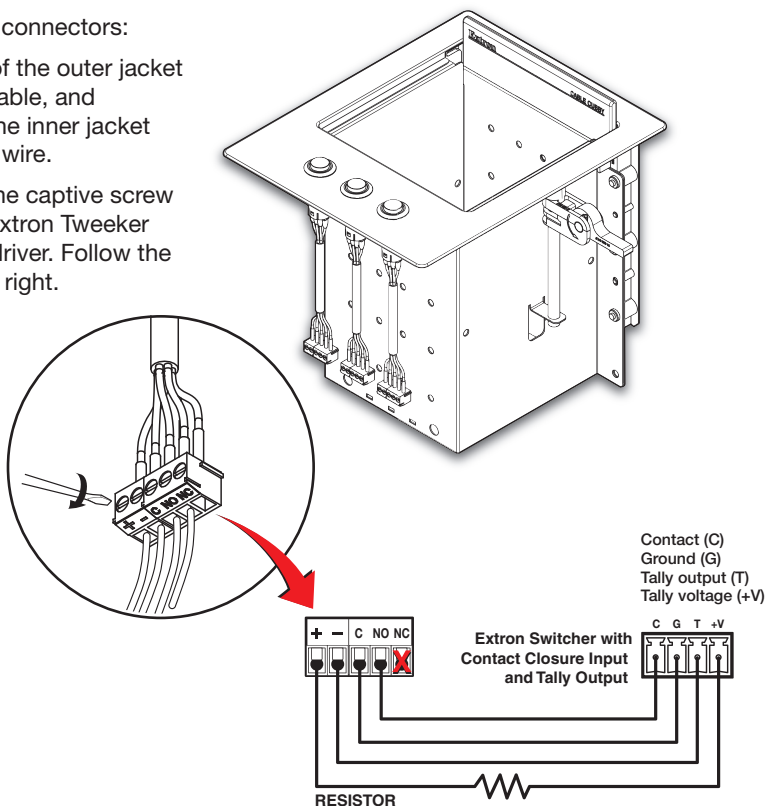
## Connecting a Cable Cubby 500 CCB

For Cable Cubby 500 CCB models, follow the instructions below, then proceed to [Mounting the Cable Cubby in the Table](#).

The Cable Cubby 500 CCB contains three contact closure buttons to control input selection on Extron switchers and products with contact closure control ports. Wire the Cable Cubby switches to the control product as shown in the wiring diagram below.

To wire the captive screw connectors:

1. Strip away 3 inches of the outer jacket from the end of the cable, and 3/16 inch (5 mm) of the inner jacket from the end of each wire.
2. Secure the wires to the captive screw connector using an Extron Tweezer or other small screwdriver. Follow the wiring diagram at the right.



**NOTE:** See the table at right to determine and select the appropriate current-limiting resistor, if needed.

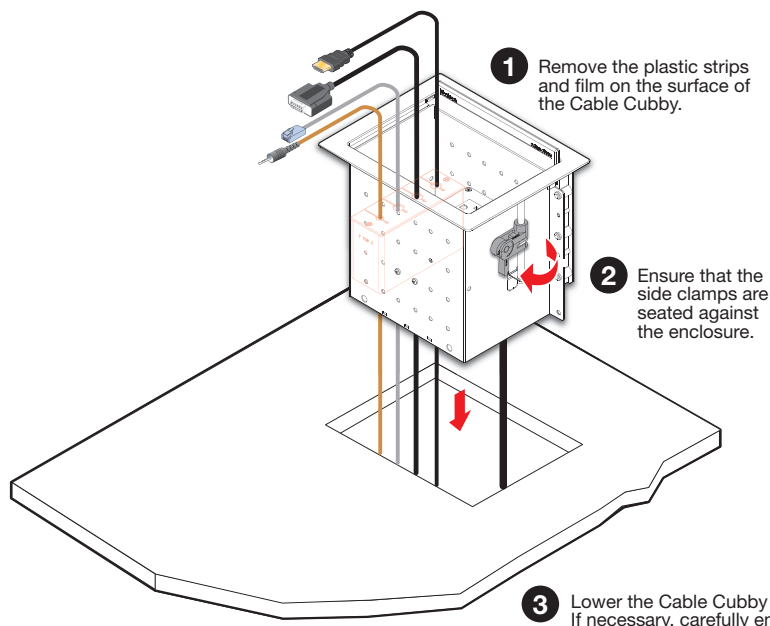
**Momentary switch (single pole, double throw) on captive screw terminal**

Contact Rating	LED Color	Recommended Resistor @ Voltage		
		5 V	12 V	24 V
1A @ 24 VDC / 125 VAC	Blue	See note below	4.52 K, 1%	13 K, 1%

**NOTE:** No resistor required for 5 VDC source.

## Mounting the Cable Cubby in the Table

### Step 1 — Mount the Cable Cubby flush with the table.

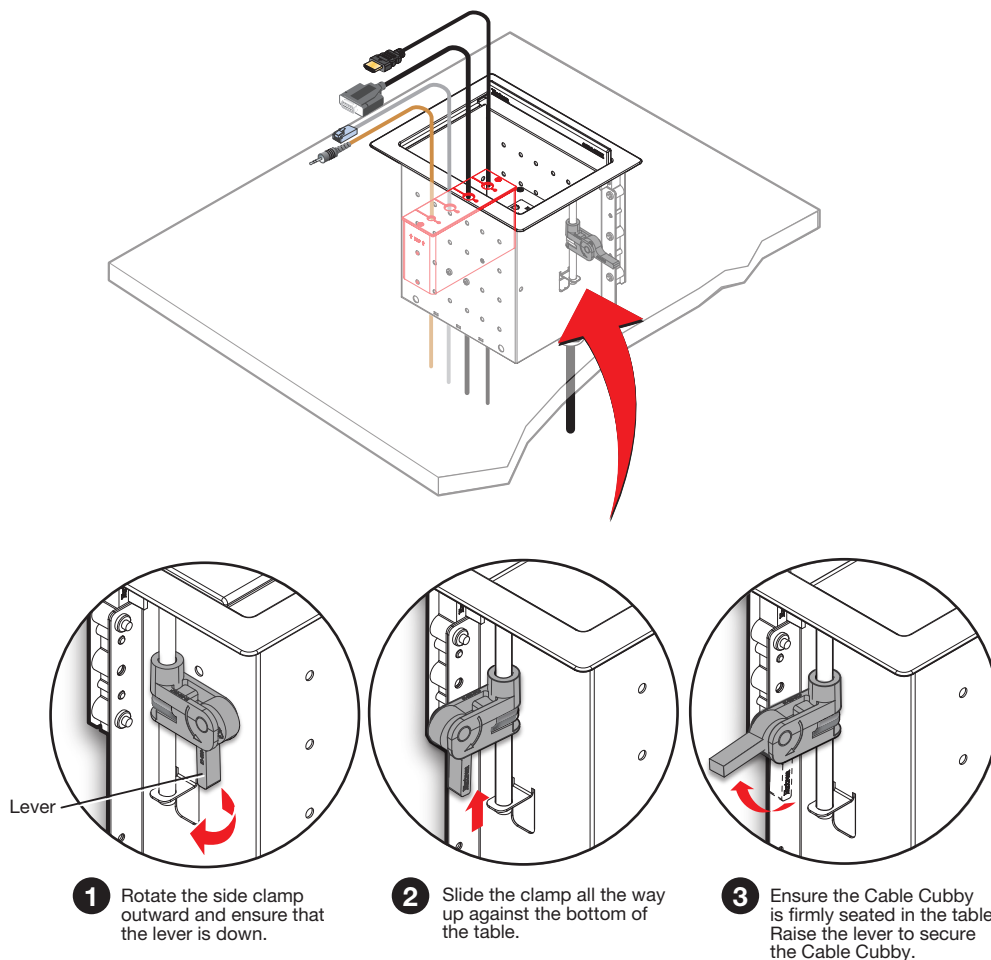


**CAUTION:** The flanged edges of the top of the surface enclosure are sharp. These edges are also soft and may be easily nicked or bent. Exercise caution when handling the enclosure to prevent personal injury or damage to the enclosure.

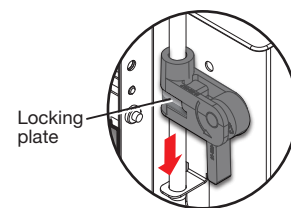
**ATTENTION:** Les extrémités à brides du haut de la surface du boîtier sont aiguisées. Ces extrémités sont aussi lisses et peuvent facilement être coupées ou pliées. Soyez prudents lorsque vous manipulez le boîtier afin d'éviter de l'endommager ou de vous blesser.

# Cable Cubby 500 and 700 • Installation Guide (Continued)

## Step 2 – Under the table, adjust the side clamps on the enclosure.

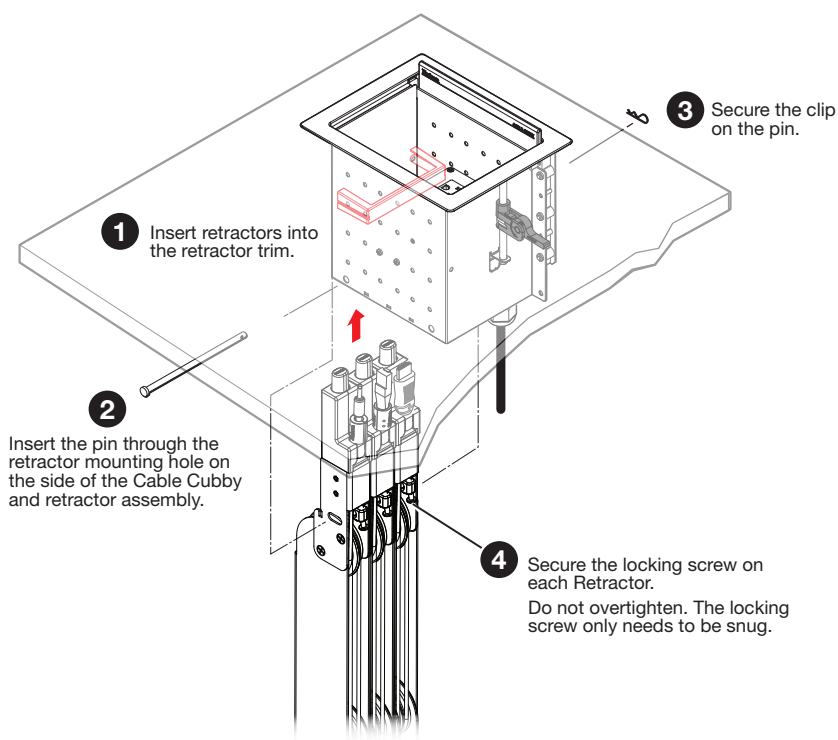


**NOTE:** To lower the side clamp, turn the lever down, then press and hold the locking plate while sliding down the clamp.

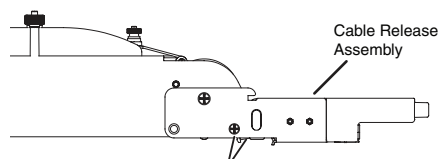


## Installing Retractors

Follow the steps below to install Retractors. For horizontal or angular Retractor mounting, see the information at right, then follow the steps below.



### Horizontal Mounting

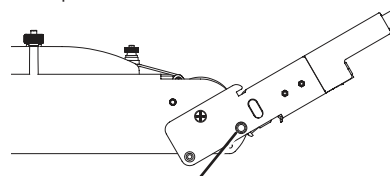


Remove two enclosure screws (one on each side) from this position. Then, mount the Retractors as shown at left.

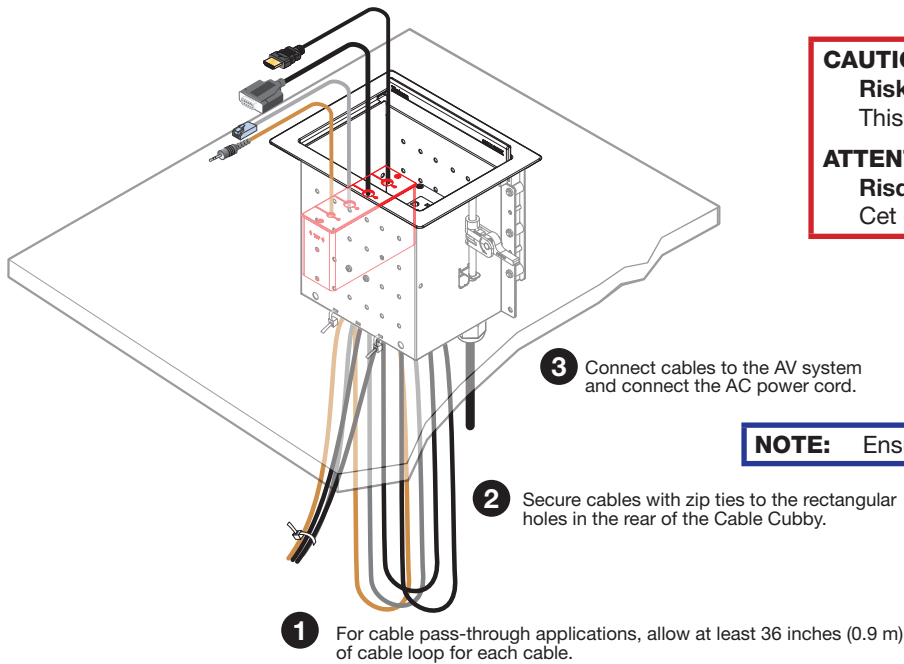
See the *Cable Retractor Setup Guide*, available on the Extron website, for additional steps.

### Angular Mounting

Remove the enclosure screws as shown above, then follow this step:



## Routing and Connecting Cables



### CAUTION:

**Risk of Electric Shock.**

This equipment must be grounded.

### ATTENTION:

**Risque de choc électrique.**

Cet équipement doit être fixé au sol.

**NOTE:** Ensure that there is no tension on the power cable.

## Installation Checklist

### Planning (page 1)

- ☐ Check with local and state regulations before starting the installation.
- ☐ Check all parts and equipment before installation.

### Preparing the Table (page 2)

- ☐ Determine the best location for the enclosure.
- ☐ Choose a method for cutting the hole in the table.

### Preparing the Cable Cubby (page 3)

- ☐ Choose and assemble a combination of AAP, cable-pass through, and Retractor connectivity to populate the Cable Cubby.
- ☐ Secure the connectivity modules and power module in the Cable Cubby.

### Connecting a Cable Cubby 500 CCB (page 4)

### Mounting the Cable Cubby in the Table (page 4)

- ☐ Mount the Cable Cubby flush with the table.
- ☐ Adjust the side clamps.

### Installing Retractors (page 5)

### Routing and Connecting Cables (page 6)

For information on safety guidelines, regulatory compliances, EMI/EMF compatibility, accessibility, and related topics, see the [Extron Safety and Regulatory Compliance Guide](#) on the Extron website.