

IMPORTANT:
Go to www.extron.com for the complete user guide and installation instructions before connecting the product to the power source.

Mounting the Desktop Touchpanel

The touchpanel has a weighted base that allows it to be placed on any suitable flat surface. For additional security, the touchpanel can be attached to a table or desktop.

1. Connect an Ethernet cable to the LAN/PoE input (see [figure 1](#), **F**, on the next page) and run the cable through the cable guide (**D**).
2. Drill two holes through the desktop from underneath, 3.07" (78 mm) apart.
3. Attach the touchpanel with two #8-32 screws through the desktop from underneath into the two mounting holes in the base of the unit (**A**).

The touchpanels can also be mounted with the optional Extron SMA-2 swivel mount adapter, which allows them to be secured to the table and swivel up to 180° in either direction. Attach the SMA-2 to the mounting holes in the base (**A**) and follow the instructions in the *SMA-2 Swivel Mount Adapter Kit User Guide*.

Base

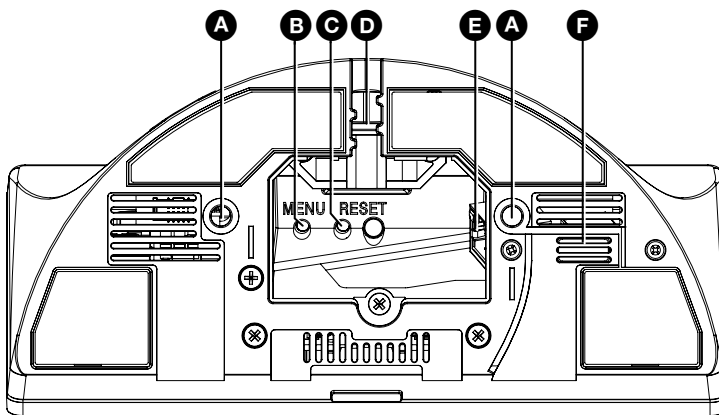


Figure 1. Base of Touchpanel

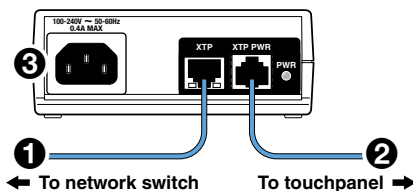


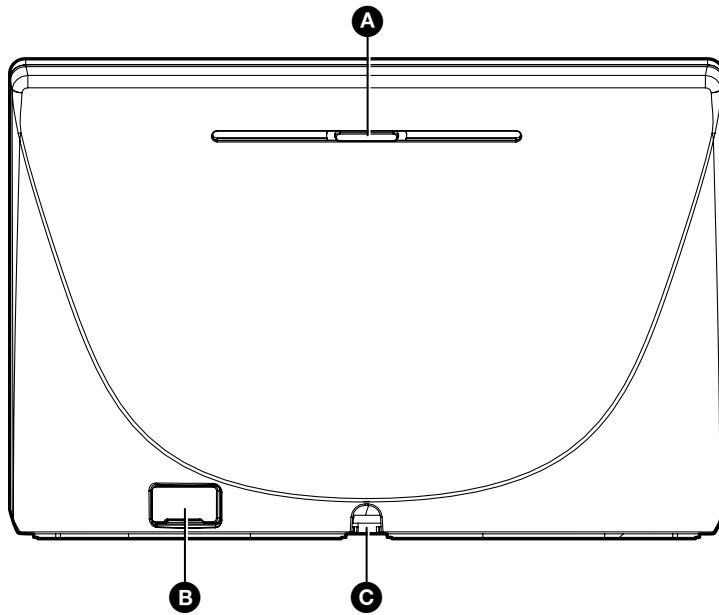
Figure 2. Connecting to a Power Injector

- A Mounting holes (2)** — See “Mounting the Desktop Touchpanel”, above.
- B Menu button** — Allows user to enter or exit the setup menu.
- C Reset button** — Allows the user to carry out a factory firmware reset.
- D Cable guide** — The LAN/PoE cable is inserted through this hole at the back of the base.
- E LAN/PoE Connector** — Attach the LAN/PoE cable to this RJ-45 port. The power injector must be purchased separately. Figure 3 shows the Extron XTP PI 100. Your power injector may look different.
Connect a straight-through Ethernet cable from the power injector to a switch or router (see figure 3, **1**). This cable carries network information from the switch or router to the power supply input. A second straight-through cable carries the network information and 48 VDC from the power injector to the touchpanel (**2**). Connect the IEC power cord to a convenient 100 VAC to 240 VAC, 50-60 Hz power source (**3**).
- F Speaker** — A single speaker provides audible feedback for the user.

ATTENTION:

- Do not power on the touchpanels or control processors until you have read the ATTENTION in the “Connecting Power” section of the *TLP Pro 525, 725, and 1025 Series User Guide*.
- Ne branchez pas les écrans tactiles ou les contrôleurs avant d’avoir lu la mise en garde dans la section « Connecting Power » du *TLP Pro 525, 725, and 1025 Series User Guide*.

Rear Panel Features



- A Status light** — Provides system feedback.
- B USB-A port** — Compatible with USB 2.0. The port is concealed behind a plastic cover, which can be removed with a small, flat-bladed screw driver.
- C Cable guide** — The LAN/PoE cable is inserted through this hole at the back of the base (see [figure 1, F](#)).

Figure 3. Rear of Touchpanel

Configuration

1. When the device is powered on for the first time, select **Zoom Rooms Controller** and click **Next**.

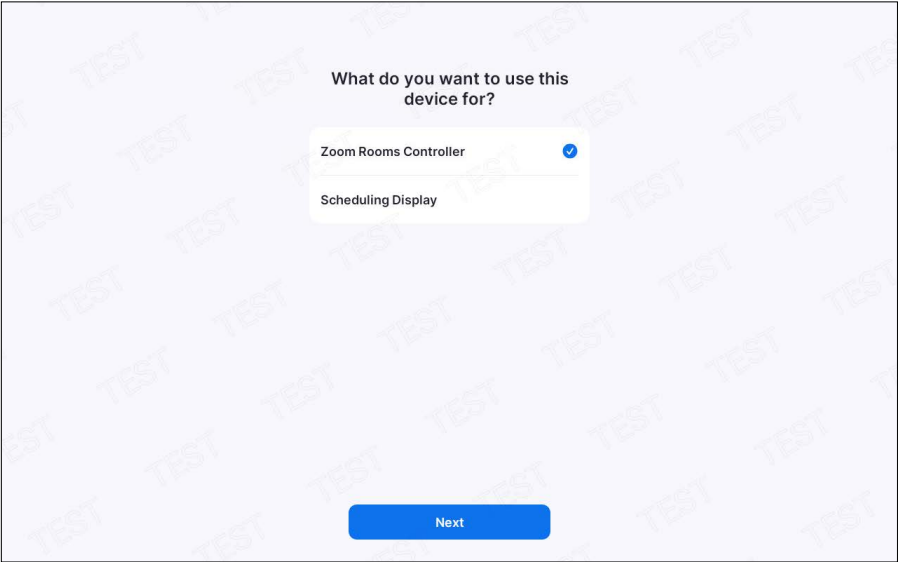


Figure 4. Select a Use for the Device

2. Click the settings (gear) icon (see figure 5, ❶).

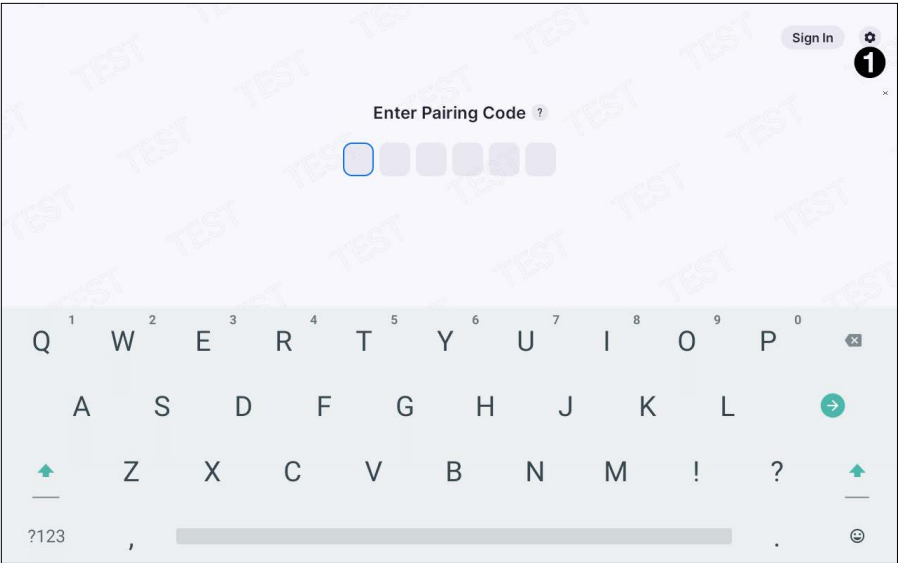


Figure 5. Click Settings Icon

3. Click **System Settings** (see figure 6, ❶).

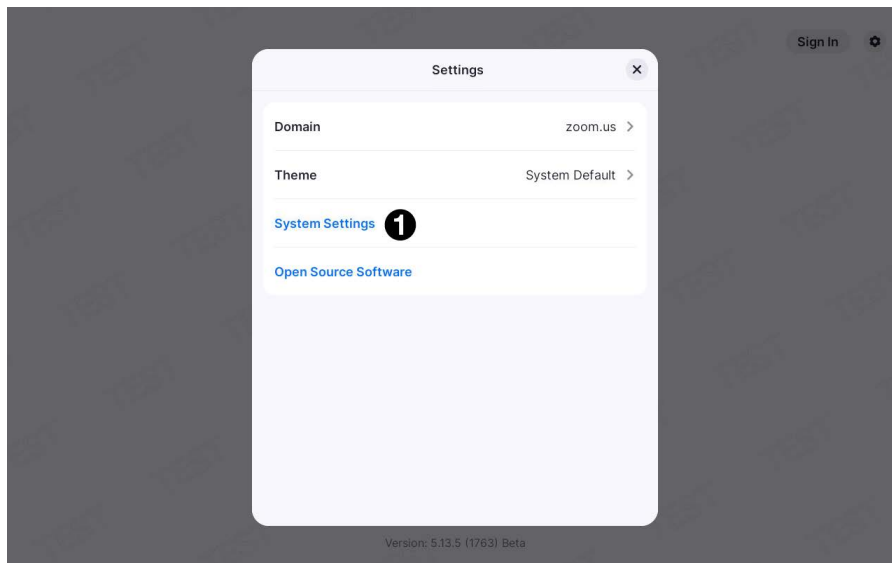


Figure 6. Settings Menu

The Settings menu opens.

4. Click **System** (see figure 7, ❶).

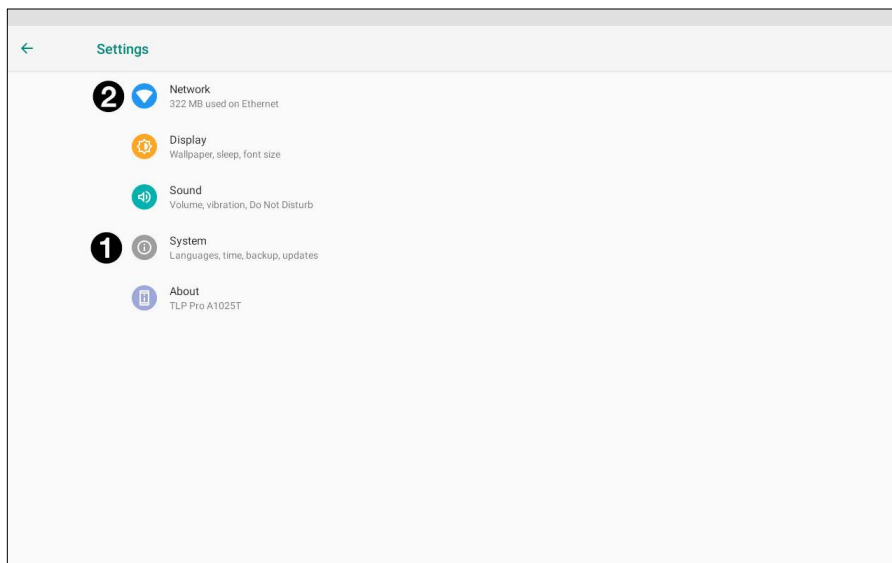


Figure 7. Settings Menu

The System menu allows you to configure Date & Time and Language.

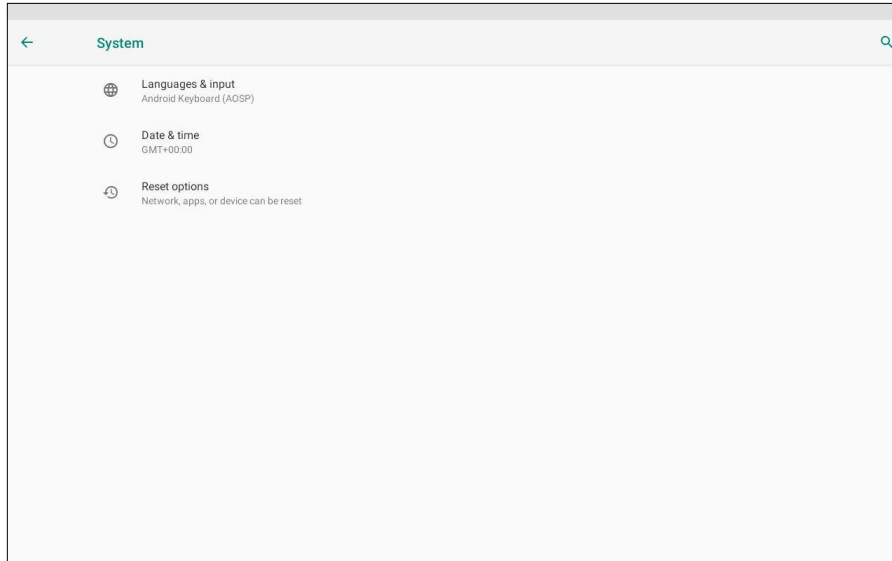


Figure 8. System Menu

5. Click **Languages & input** and use the options to select the language used by the application.
6. Return to the **System** menu and click **Date & time**. Use the options to set date and time automatically, or to set date, time, and time zone manually. You can also toggle between a 12-hour or 24-hour clock.
7. Return to the Settings page and click **Network** (see [figure 7](#), ②, on the previous page).
8. Use the toggle switch to select DHCP enabled or disabled.

If DHCP is enabled, the unit Host Name can be configured. All other network settings are read-only.

If DHCP is disabled, consult your network administrator to obtain a valid network IP address, Gateway address, Subnet mask, and DNS server.

NOTE: For more information about using the setup menu to configure the touchpanel, see the *Zoom Room Controller User Guide*, which is available at www.extron.com.

Updating Firmware

1. Open Toolbelt.
2. Discover or manually add the device.

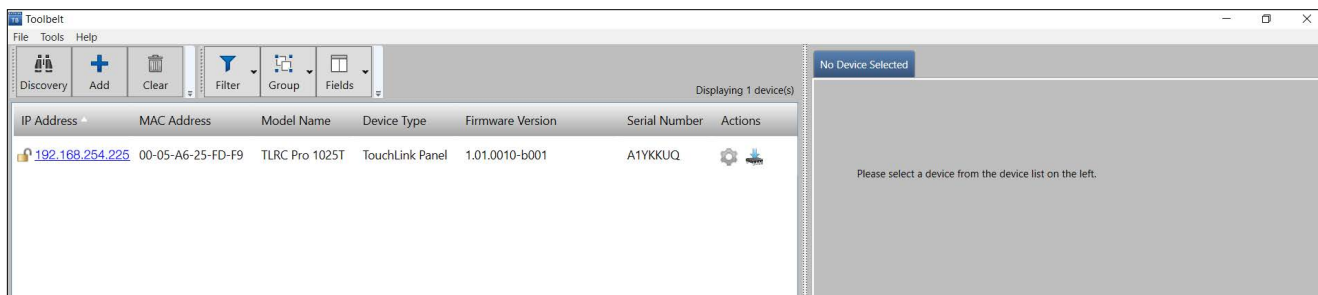


Figure 9. Toolbelt — Discover Devices

3. Select one or more devices to update from the Device list.
 - **Single device selection** — <Right click> on a single device and select **Update Firmware**.
 - **Multiple device selection** — To select multiple devices:
 - a. Hold down <Shift> and click on a range.
 - b. <Right click> and select **Update Firmware** or click on the **Update Firmware** icon in the Actions column.
4. Open the Firmware Uploader window by clicking **Tools > Firmware Uploader...**

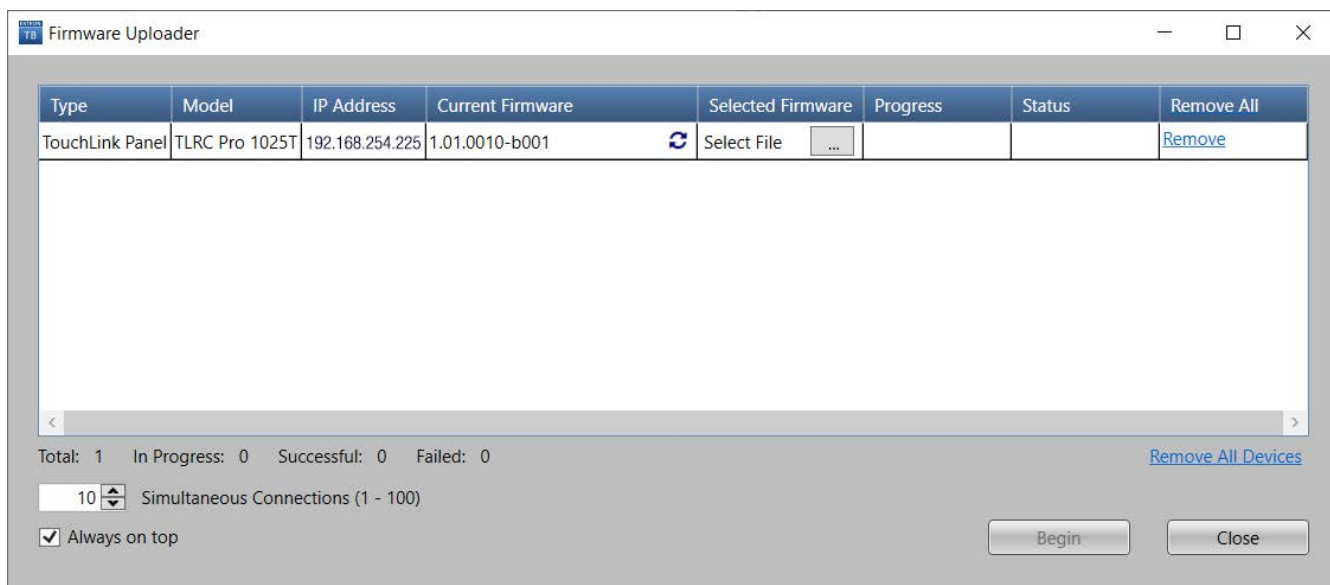


Figure 10. Toolbelt — Firmware Loader

5. Enter the credentials for each device if prompted.
6. Click **Begin**. Firmware Uploader begins to upload the selected firmware to the selected device(s).

The update process goes through the following states:

- **Idle** — no upload taking place
- **Uploading** — pre-installation
- **Verification** — start of installation
- **Installation** — installing selected firmware version on device
- **Completion** — firmware upload successful

For more information about using Toolbelt to update firmware, see the *Toolbelt Help File* at www.extron.com.

For information on safety guidelines, regulatory compliances, EMI/EMF compatibility, accessibility, and related topics, see the [Extron Safety and Regulatory Compliance Guide](#) on the Extron website.