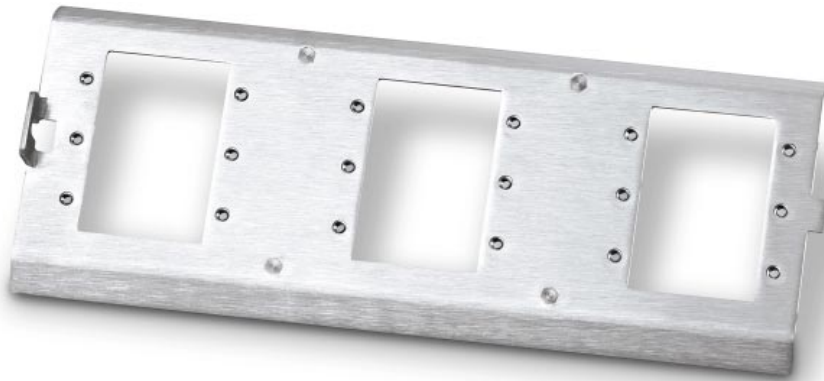


IN9179 IN9180

Modular A/V Connector Plates for Steel City™ AFM-6 & AFM-8 Floor Boxes



IN9179

The **IN9179** is a modular connector plate designed to mount in a Steel City™ AFM-6 floor box. The **IN9179** can hold up to 9 single size A/V connector modules. One or two **IN9179** modular connector plates can be mounted in an AFM-6 floor box.

The **IN9180** is a modular connector plate is designed to mount in a Steel City™ AFM-8 floor box. The **IN9180** can hold up to 15 single size A/V connector modules. One or two **IN9180** modular connector plates can be mounted in an AFM-8 floor box.

Modular Connector Plate - The **IN9179 / IN9180** provide a clean, simple way to specify and install a wide variety of audiovisual connectors in Steel City floor boxes. Each connector can be terminated before mounting it in the **IN9179 / IN9180** connector plate. Modules are held in place with 3/32" hex screws (included with each connector module). An **IN9334** 3/32" allen wrench is provided with each **IN9179 / IN9180**.

A/V Connector Modules - Dozens of modules are available with popular video, audio, phone, data, and control connectors. Most connector modules take up a single space, however a few larger connectors such as XLR require a double size connector module.

A/V modules are listed on reverse

Blank Plates - are available in single, double, triple or quad size. These can be used to fill extra space above or below other modules and may be engraved by the installer to act as labels for adjacent connector modules. The double, triple and quad size blank plates provide maximum flexibility for installers who wish to mount their own connectors to accommodate special configurations.

Custom Engraving Services Available - Inline can provide custom engraving services to label each connector as required (extra charge for custom engraving).

Stereo Audio Signal Balancing - The **IN9179 / IN9180** can be ordered with the **IN9370** Balanced Audio Buffer Module. This optional factory installed module takes unbalanced stereo audio signals applied to a stereo audio connector plate and converts them to balanced audio. Balanced audio signals are output on a 5-pin captive screw terminal connector. The **IN9370** audio buffer module requires an **IN9214** ±5VDC power supply (ordered separately).



Tel 714. 921. 4100
Fax 714. 921. 4160

FEATURES

- Units Accept up to 9 or 15 Audio / Video Connector Modules to Create a Custom A/V Connector Plate Optimized for Each Application
- Modular Connector Plates Will Hold Single, Double, Triple and Quad Size Connector Modules
- Dozens of Connector Module Models Available Featuring Popular Video, Audio, Phone, Data Connectors
- Specially Designed to Mount in Steel City™ AFM-6 or AFM-8 Floor Box (Floor Box Not Included)
- Each Connector Plate Can Hold One or Two Optional IN9370 Audio Buffer Modules

SPECIFICATIONS

A/V CONNECTOR MODULES:

IN9179 Faceplate accepts up to (9) IN93XX Single Size A/V Connector Modules

IN9180 Faceplate accepts up to (15) IN93XX Single Size A/V Connector Modules

GENERAL:

Finish:	Brushed Aluminum
Mounting:	IN9179 Mounts in Steel City AFM-6 Floor Box IN9180 Mounts in Steel City AFM-8 Floor Box
Accessories Included:	IN9334 3/32" Allen Wrench for IN93XX Connector Module Set Screws
Shipping Weight:	1 lbs. / 0.5 Kg
Dimensions:	Product Weight: 0.2 lbs / 0.1 Kg IN9179: 3.4" x 9" x 0.5" / 8.6 x 22.9 x 1.3 cm IN9180: 4.5" x 9.35" x 1.6" / 11.4 x 23.8 x 4.0 cm
Faceplate Thickness:	0.1" / 2mm

Steel City™ is a Trademark of Thomas & Betts

A/V CONNECTOR MODULES - PARTIAL LIST

Connector Module Black / White	Description	Module Size
IN9350B / IN9350W	Blank Plate - Single Size	Single
IN9351B / IN9351W	(2) BNC Barrel: Female to Female	Single
IN9352B / IN9352W	(1) S-Video: 4-Pin Mini DIN Female	Single
IN9353B / IN9353W	(2) RCA Female: 1 Black / 1 Red	Single
IN9354B / IN9354W	(2) 1/4" Stereo Phono Female	Single
IN9355B / IN9355W	(2) 3.5mm Mini Stereo Female	Single
IN9356B / IN9356W	(1) 5-Pin Captive Screw Terminal	Single
IN9357B / IN9357W	(2) F-Connector Barrel: Female to Female	Single
IN9358B / IN9358W	(1) RJ11	Single
IN9359B / IN9359W	(1) RJ45	Single
IN9360B / IN9360W	(1) Contact Closure Switch with LED & (1) 3.5mm Stereo Mini Female	Single
IN9361B / IN9361W	(1) 15-Pin HD Gender Changer: Female to Female	Single
IN9362B / IN9362W	(1) 15-Pin HD Gender Changer: Male to Male	Single
IN9363B / IN9363W	(1) S-Video Barrel: 4-Pin Mini DIN Female to Female & (1) BNC Barrel: Female to Female	Single
IN9364DB / IN9364DW	(1) 4-Pin XLR Female	Double
IN9365DB / IN9365DW	(1) 3-Pin XLR Female	Double
IN9366DB / IN9366DW	(1) 6-Pin XLR Female	Double
IN9367DB / IN9367DW	Blank Plate - Double	Double
IN9368TB / IN9368TW	Blank Plate - Triple	Triple
IN9369QB / IN9369QW	Blank Plate - Quad	Quad
IN9372DB / IN9372DW	A/V Super Module: (2) RCA Female- Audio: 1 Black / 1 Red (1) RCA Female - Video: Yellow (1) S-Video: 4-Pin Mini DIN Female	Double
IN9373B / IN9373W	(2) RCA Barrel: Female to Female	Single
IN9374B / IN9374W	(1) 9-Pin D Gender Changer: Female to Female	Single
IN9375B / IN9375W	(2) 6-Pin Mini DIN Female Keyboard / Mouse Connectors	Single