

IN3804 / IN3808

PRESENTATION SWITCHERS

FEATURES

- **8 x 4 Matrix for RGBHV and Stereo Audio**
- **Two Switching Modes:**
Direct Mode for Simple One-Touch Operation,
Matrix Mode for Complex Applications
- **350 MHz Bandwidth**
- **Compatible with Composite, S-Video, Component, RGsB, RGBS, RGBHV Signals**
- **Models Available for Balanced and Unbalanced Stereo Audio Signals**
- **Volume Control and Mute**
- **Control From Front Panel or Via RS-232 Control**
- **10 Configuration Memories to Store Commonly Used Input / Output Configurations**
- **Function Keys Store Up to 8 Serial Command Strings to Control Various A/V Equipment**



SWITCHERS & MATRICES

The **IN3804** and **IN3808** Presentation Switchers are 8-Input, 4-Output matrices for high resolution video and stereo audio. The two units are virtually identical, with the only difference being the output connectors.

- The **IN3804** is an 8 x 4 matrix with one BNC connector for each video output signal.
- The **IN3808** is an 8 x 4 x 2 matrix with two BNC connectors for each output signal. This allows two devices to be connected to each of the four outputs.

Featuring 350 MHz bandwidth, two switching modes, and intuitive operation, the **IN3804 / IN3808** are ideal for permanent installations, rentals, complex staging operations and any other display system requiring a high performance, economical matrix switcher. The following models are available to match your switching requirements:

Model	Configuration	Signal Compatibility
IN3804-1 / IN3808-1	RGB	RGsB, Component, Y/C, Composite
IN3804-2 / IN3808-2	RGB + Audio	RGsB, Component, Y/C, Composite, Stereo Audio (Balanced)
IN3804-3 / IN3808-3	RGB + Audio	RGsB, Component, Y/C, Composite, Stereo Audio (Unbalanced)
IN3804-4 / IN3808-4	RGBHV	RGBHV, RGBS, RGsB, Component, Y/C, Composite
IN3804-5 / IN3808-5	RGBHV + Audio	RGBHV, RGBS, RGsB, Component, Y/C, Composite, Stereo Audio (Balanced)
IN3804-6 / IN3808-6	RGBHV + Audio	RGBHV, RGBS, RGsB, Component, Y/C, Composite, Stereo Audio (Unbalanced)

Direct Switching Mode

In Direct Mode, the **IN3804 / IN3808** act as a projector switcher, routing composite, S-Video and RGB signals to the appropriate outputs. The user simply presses one of the 8 large input buttons and that input signal is automatically routed to the pre-programmed output or outputs. These switchers can also store and transmit commands to a video / data display device which tell the display to switch inputs and/or recall a convergence memory.

Matrix Switching Mode

For advanced applications requiring multiple outputs, the **IN3804 / IN3808** can operate as a true 8 x 4 matrix switcher. In Matrix Mode, users press an output button followed by an input button and a new patch is immediately executed. The unit features large switching buttons and ample space for installers to affix custom labels specifying input sources and output devices.

Dual Output Connectors — IN3808 Only

With two sets of BNC connectors on each of its four outputs, the **IN3808** lets you connect up to 8 total display and output devices without additional outboard distribution amplifiers. The dual connectors are ideal

for double-stacked projector installations and for connecting cueing or preview monitors found in complex presentation and staging systems.

Input / Output Labeling System

The **IN3804 / IN3808** features attachment posts to securely hold engravable name plates. The optional **IN9346** nameplate kit includes two plastic plates that can be engraved to neatly show the names of each input and output device.

Projector and Audiovisual Device Control

The **IN3804 / IN3808** can store and transmit RS-232, RS-422 or RS-485 serial commands to control projectors, **INLINE** products or other serially controlled A/V equipment. Serial commands can be automatically triggered when inputs or outputs are selected or when a function button is pressed. All serial control codes required to control other devices must be provided by the installing technician.

Setup and Control Software

Windows™ 95/98/NT compatible software provided with the **IN3804 / IN3808** makes it easy to set up the switcher and store control codes. The software also

provides effortless control over all matrix switching and audio level functions. For detailed information on the setup and control software see page 100.

Function Buttons

In addition to codes triggered automatically by input selection, the switcher can also store 8 additional code strings which are triggered by the four function buttons. The function buttons might be used to set the projector into standby mode, select lighting presets, switch video scaler inputs, interface with a control system or to activate virtually any other serially controlled event.

Advanced Audio Switching Capability

IN3804 / IN3808 models with audio capability offer very high quality switching and amplification for stereo audio input and output signals. Unique gain trim levels can be adjusted and stored for each input, helping standardize signal levels among various types of audio sources. Each output has a master volume control and mute capability that can be controlled from the front panel or via RS-232 serial commands. Left / Right balance can also be adjusted as required using RS-232 commands.

(continued next page)

(continued from previous page)

Two types of audio switching boards are available:

Balanced Audio Models

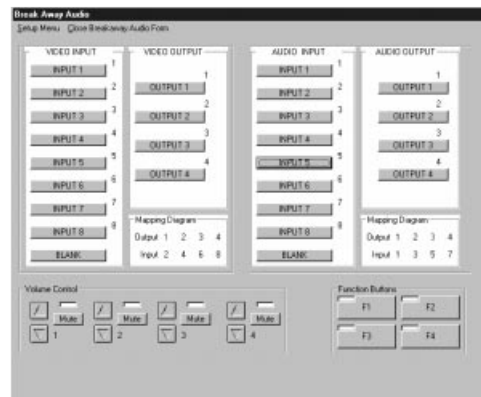
The IN3804-2 / IN3808-2 and IN3804-5 / IN3808-5 feature 5-pin captive screw connectors for audio inputs / outputs and are compatible with balanced or unbalanced audio signals. By wiring the inputs and outputs appropriately, unbalanced input signals can be output as balanced audio and vice versa. These models are ideal for permanent installations and other applications requiring balanced / unbalanced signal compatibility and quick input / output termination to bare wires.

Unbalanced Audio Models

The IN3804-3 / IN3808-3 and IN3804-6 / IN3808-6 feature 4-pin captive screw connectors for audio inputs / outputs and are compatible with unbalanced audio signals.

Audio Breakaway Switching

The default operation mode for the IN3804 / IN3808 is audio-follow-video switching, where audio and video signals switch together. For enhanced ease of operation with typical usage, the IN3804 / IN3808 always provides audio-follow-video switching when operating the unit from the front panel. For special applications requiring additional switching flexibility, audio and video can be switched separately via the RS-232 serial port. Audio breakaway switching can be controlled using the switching control software provided with the unit (pictured to the right) or using a third party control system.



IN3804 / IN3808 Control Software — Breakaway Audio Switching Control Window



SWITCHERS & MATRICES

SPECIFICATIONS

INPUT

Video / Sync Connectors:
 IN3804-1 / -2 / -3: (8) Sets of 3 female BNC
 IN3804-4 / -5 / -6: (8) Sets of 5 female BNC
 IN3808-1 / -2 / -3: (8) Sets of 3 female BNC
 IN3808-4 / -5 / -6: (8) Sets of 5 female BNC

Stereo Audio Connectors:
 IN3804 / IN3808-2 / -5:
 (8) female 5-Pin Captive Screw
 IN3804 / IN3808-3 / -6:
 (8) female 4-Pin Captive Screw

Signal Levels:
 Video: +/- 3.0 Volts
 Sync: +/- 5.0 Volts
 Audio: +/- 8 Volts (high Z),
 +/- 4 Volts (low Z)

Impedance:
 Video / Sync: 75 Ω
 Audio: 600 Ω

OUTPUT

Video / Sync Connectors:
 IN3804-1 / -2 / -3: (4) Sets of 3 female BNC
 IN3804-4 / -5 / -6: (4) Sets of 5 female BNC
 IN3808-1 / -2 / -3: (8) Sets of 3 female BNC
 IN3808-4 / -5 / -6: (8) Sets of 5 female BNC

Stereo Audio Connectors:
 IN3804 / IN3808-2 / -5:
 (4) female 5-Pin Captive Screw
 IN3804 / IN3808-3 / -6:
 (4) female 4-Pin Captive Screw

RGB Bandwidth: >350 MHz any channel driving any number of outputs, measured with .7V input signal at -3dB

GENERAL

Serial Control Ports: 1200 to 38400 baud, RS-232, RS-422, RS-485 (2) Serial Ports, 5-Pin Phoenix Brand Connectors

Accessories Included: Programming / Setup Software

Power Supply: Internal 90 to 260 VAC, 47 to 90 Hz (universal)

Product Weight: 10 lbs.

Shipping Weight: 14 lbs.

Dimensions: 5.25" x 17" x 12.2" (excluding mounting flanges)

Regulatory Approvals: UL1950, CAN/CSA-22.2 No.950, Third Edition CE; EN55022 (1987), EN50081-1 (1991), EN50082-1 (1992 and 1994), EN60950-92

ORDER INFORMATION

- IN3804-1** 8x4 Matrix Switcher — 350 MHz: RGB / Component Video
- IN3804-2** 8x4 Matrix Switcher — 350 MHz: RGB / Component Video + Balanced Stereo Audio (Phoenix)
- IN3804-3** 8x4 Matrix Switcher — 350 MHz: RGB / Component Video + Unbalanced Stereo Audio (Phoenix)
- IN3804-4** 8x4 Matrix Switcher — 350 MHz: RGBHV
- IN3804-5** 8x4 Matrix Switcher — 350 MHz: RGBHV + Balanced Stereo Audio (Phoenix)
- IN3804-6** 8x4 Matrix Switcher — 350 MHz: RGBHV + Unbalanced Stereo Audio (Phoenix)

- IN3808-1** 8x4x2 Matrix Switcher — 350 MHz: RGB / Component Video
- IN3808-2** 8x4x2 Matrix Switcher — 350 MHz: RGB / Component Video + Balanced Stereo Audio (Phoenix)
- IN3808-3** 8x4x2 Matrix Switcher — 350 MHz: RGB / Component Video + Unbalanced Stereo Audio (Phoenix)
- IN3808-4** 8x4x2 Matrix Switcher — 350 MHz: RGBHV
- IN3808-5** 8x4x2 Matrix Switcher — 350 MHz: RGBHV + Balanced Stereo Audio (Phoenix)
- IN3808-6** 8x4x2 Matrix Switcher — 350 MHz: RGBHV + Unbalanced Stereo Audio (Phoenix)

Switcher & Matrix Accessories — See Pages 101 & 102