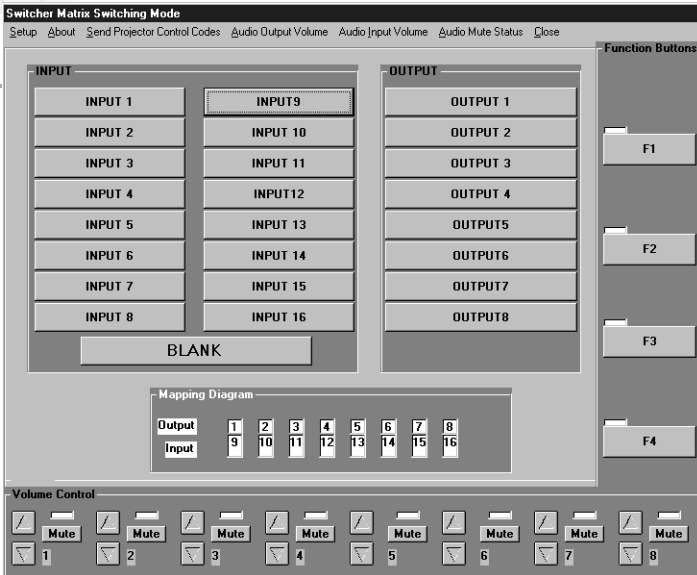


Setup and Control Software

For IN3808 / IN31208 / IN31608 Presentation Switchers & IN20804 / IN21608 Matrix Switchers



Matrix Mode Switching Control Window (IN31608)

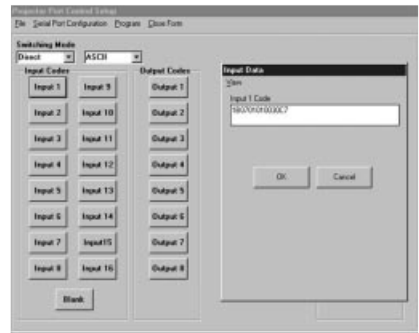
of operation that offers easy one button control. The setup software provides a graphical way to program and verify the input / output patching for Direct Mode operation.

Program Control Codes

The IN3808 / IN20808 / IN21608 / IN31208 / IN31608 matrices can store and transmit RS-232 / RS-422 / RS-485 serial

FEATURES

- Set Up and Configure Matrix and Presentation Switchers
- Store Serial Code Strings to Control Projectors and Other A/V Devices
- Execute Switches, Recall Memories
- Control Audio and Video Switching Separately
- Control Volume and Mute Functions
- Compatible with Windows 95 / 98 / NT



Control Code Programming Window (IN31608)

Control Switching Operations

Graphical control screens are included that provide intuitive control over matrix switching operation in Direct Mode, Matrix Mode and Matrix Mode with audio breakaway switching. The on-screen input / output selection buttons can be labeled with the names of the input / output devices. A mapping display shows the current input / output routing configuration. Buttons are also included for output volume control and audio muting.

INLINE presentation switchers include setup and control software that helps you configure and control the matrixes for various applications.

Set Switching Configuration

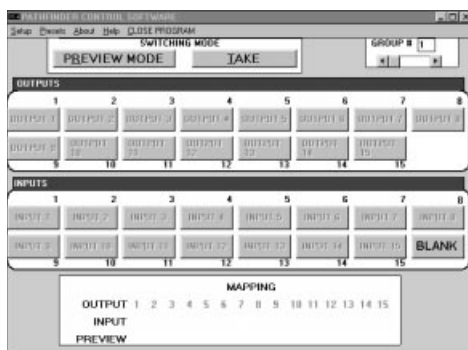
The software lets you set the matrix so that video and audio switch together or separately. It also provides an easy way to set parameters such as RGB delay.

Set I/O Patches for Direct Mode

One of the unique features of the INLINE matrix / presentation switchers is Direct Mode switching, a simplified mode

command strings to control projectors, presentation displays and other serially controlled A/V devices. Command strings can be associated with input selection, output selection, memory recall and the function buttons. The setup software includes menus and screens to store and verify serial command strings in ASCII or hex format. Additional menus are provided to configure the matrix switcher's projector control port with the appropriate serial protocol parameters to match the requirements of the device being controlled.

PATHFINDER HR Setup and Control Software



The IN60016HR reconfigurable matrix includes software that lets you optimize switcher parameters for a variety of applications.

Two Switching Modes

In **Direct Mode**, the Pathfinder control software immediately transmits the codes to execute each new input / output patch as soon as the on-screen input / output buttons are clicked. Operating in **Preview Mode**, all input / output patches are stored in memory. When the "TAKE" button is pressed, the software sends a code to the

Pathfinder telling the switcher to execute all of the new I/O patches simultaneously (a salvo).

Configuration Capability

The most unique feature of the IN60016HR matrix is the ability to set the unit for different input / output configurations without changing any hardware. The Pathfinder control software makes it easy to harness the full power of the switcher's 10 reconfigurable I/O ports, letting you set the unit to operate as a 14 x 2 matrix, a 4 x 12 matrix or any intermediate configuration.

FEATURES

- Set up and Configure Pathfinder HR Matrices
- Execute Switches, Recall Memories
- Compatible with Windows 3.1 / 95 / 98 / NT

The setup software also provides menus and screens to set board group configurations and RGB delay times.

Control Switching Operations

Graphical control screens are included that provide intuitive control over matrix switching operation. The on-screen input / output selection buttons can be labeled with the names of the input / output devices. A mapping display shows the current input / output routing configuration.