

# Operation Manual



## IN3662 2-Input 2-Output VGA Switcher





## Installation and Safety Instructions

### *For Models without a Power Switch:*

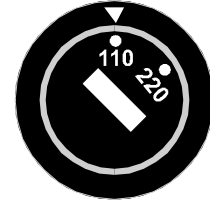
The socket outlet shall be installed near the equipment and shall be accessible.

### *For Models with 110 / 220V Power Selector:*

**Caution:** Before applying power to this unit, the voltage selector must be set to the appropriate setting to match local A/C line voltage. Improper setting of the voltage selector may cause damage to the unit and create a potential fire hazard.

The voltage selector is a round switch located next to the A/C power input connector which looks like this:

Using a straight slot screwdriver or small coin, rotate the selector to the correct position so that the arrow lines up with 110 or 220 as appropriate for local power line voltage as indicated in the chart below:



Local A/C Voltage	Voltage Selector Setting
110 ~ 120 VAC	110
220 ~ 240 VAC	220

### *For all Models:*

No serviceable parts inside the unit. Refer service to a qualified technician.

### *For Models with Internal or External Fuses:*

For continued protection against fire hazard, replace only with same type and rating of fuse.

### *For IN2001 / IN3234 / IN3236 / IN3502 / IN3504 / IN3506 / IN3562 / IN3564 / IN3566 / IN3572 / IN3574 / IN3576:*

**Caution:** Double pole / neutral fusing.

### *For all Models with Integral Lithium Battery:*

**Caution:** Danger of explosion if battery is incorrectly replaced. Replace only with the same or equivalent type recommended by the manufacturer. Dispose of used batteries according to the manufacturer's instructions.



## Instructions d'installation et de sécurité

### *Pour les modèles sans interrupteur de courant:*

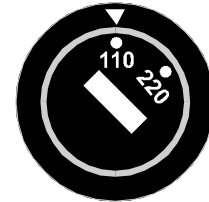
La prise de courant d'alimentation sera installé près de l'équipement et sera accessible.

### *Pour les modèles avec un sélecteur d'alimentation 110V/220V:*

**Attention:** Avant de connecter l'appareil au circuit d'alimentation, le sélecteur de courant doit être positionné sur la sélection appropriée correspondant au voltage du circuit de courant alternatif local. Une mauvaise sélection peut engendrer des dommages à l'appareil et créer un danger d'incendie.

Le sélecteur d'alimentation est un commutateur rond positionné près du connecteur d'alimentation. Il se représente comme suit:

A l'aide d'un tourne-vis plat ou d'une pièce de monnaie, le sélecteur peut être tourné dans la position adéquate en veillant que la flèche corresponde avec 110 ou 220, en fonction de la valeur du circuit de courant local. (Voir tableau ci-dessous)



Circuit local AC	Position Sélecteur
110 ~ 120 VAC	110
220 ~ 240 VAC	220

### *Pour tout les modèles:*

Pas de composants à entretenir à l'intérieur. Confiez toute réparation à un technicien qualifié.

### *Pour les modèles équipés de fusibles internes ou externes:*

Afin d'éviter tout danger d'incendie, ne remplacer qu'avec le même type et la même valeur de fusible.

### *Pour IN2001 / IN3234 / IN3236 / IN3502 / IN3504 / IN3506 / IN3562 / IN3564 / IN3566 / IN3572 / IN3574 / IN3576:*

**Attention:** Double pôle / fusible au neutre.

### *Pour tout les modèles avec une batterie au lithium interne:*

**Attention:** Danger d'explosion si la batterie est incorrectement remplacée. Ne remplacez la batterie qu'avec le même modèle, ou avec un modèle recommandé par le constructeur. Traitez les batteries usagées selon les instructions du fabricant, ou selon les normes écologiques en vigueur.



## Installations und Sicherheitshinweise

### Für Geräte ohne Netzschalter:

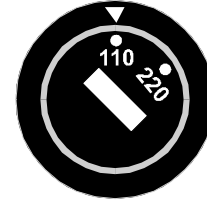
Die Netzsteckdose soll in der Nähe des Gerätes installiert und frei zugänglich sein.

### Für Geräte mit 110 / 220V Spannungswähler:

**Achtung:** Bevor Sie dem Gerät Spannung zuführen, muß der Spannungswähler entsprechend der Spannung des lokalen Wechselspannungsnetzes eingestellt werden. Die falsche Stellung des Spannungswählers kann eine Beschädigung des Gerätes und möglicherweise ein Feuer verursachen.

Der Spannungswähler ist ein runder Schalter in der Nähe der Netzeingangsbuchse mit folgendem Aussehen:

Drehen Sie den Wähler mit einem normalen Schraubenzieher oder einer kleinen Münze so, daß der Pfeil auf die 110 oder 220 zeigt, entsprechend der Spannung Ihres lokalen Netzes wie hier angezeigt:



Lokale Netzwechselspannung	Stellung des Spannungswählers
110 ~ 120 V	110
220 ~ 240 V	220

### Für alle Geräte:

Keine Wartung innerhalb des Gerätes notwendig. Reparaturen nur durch einen Fachmann!

### Für Geräte mit interner oder externer Sicherung:

Für dauernden Schutz gegen Feuergefahr darf die Sicherung nur gegen eine andere gleichen Typs und gleicher Nennleistung ausgewechselt werden.

### Für IN2001 / IN3234 / IN3236 / IN3502 / IN3504 / IN3506 / IN3562 / IN3564 / IN3566 / IN3572 / IN3574 / IN3576:

**Achtung:** Allpolige Absicherung

### Für alle Geräte mit eingebauter Lithium Batterie:

**Achtung:** Explosionsgefahr bei falschem Batterieeinsatz. Batterie nur ersetzen durch den gleichen oder entsprechenden Typ wie vom Hersteller empfohlen. Entsorgung verbrauchter Batterien nur nach den Anweisungen des Herstellers.



## Instalacion E Instrucciones de Seguridad

### Modelos Sin Interruptor:

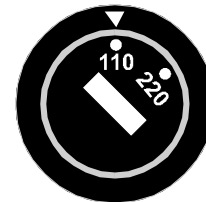
La conexión debe ser instalada cerca del equipo y debe ser accesible.

### Modelos con Selector de Voltaje de 110/220V:

**Precaución:** Antes de operar esta unidad, el selector de voltaje debe instalarse de forma que corresponda a la línea de voltaje local. Instalación inadecuada del selector de voltaje puede causar daño a la unidad y originar un incendio.

El selector de voltaje es un cambio vía redondo localizado cerca de la conexión eléctrica, como se ve en el dibujo:

Use un destornillador común o una moneda pequeña, mueva el selector a la posición correcta, de forma que las flechas indiquen 110 o 220 de acuerdo con el voltaje local, como está indicado a continuación.



Voltaje Local A/C	Selector de Voltaje
110 ~ 120 VAC	110
220 ~ 240 VAC	220

### Para Todos Los Modelos:

Dentro de la unidad, no hay partes para reparar. Llame un técnico calificado.

### Modelos con Fusibles Internos o Externos:

Para prevenir un incendio, reemplace solo con el mismo tipo de fusible.

### Modelos IN2001 / IN3234 / IN3236 / IN3502 / IN3504 / IN3506 / IN3562 / IN3564 / IN3566 / IN3572 / IN3574 / IN3576:

**Precaución:** Double Polo / Fusible Neutral.

### Modelos con Batería de Lithium Interna:

**Precaución:** Peligro de explosión si la batería es reemplazada incorrectamente. Reemplace solamente con la misma clase de batería, o una equivalente recomendada por el fabricante. Deseche las baterías usadas de acuerdo con las instrucciones del fabricante.

**CE COMPLIANCE**

All products exported to Europe by Inline, Inc. after January 1, 1997 have been tested and found to comply with EU Council Directive 89/336/EEC. These devices conform to the following standards:

EN50081-1 (1991), EN55022 (1987)

EN50082-1 (1992 and 1994), EN60950-92

**Shielded interconnect cables must be employed with this equipment to ensure compliance with the pertinent Electromagnetic Interference (EMI) and Electromagnetic Compatibility (EMC) standards governing this device.**

**FCC COMPLIANCE**

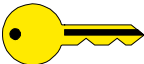
This device has been tested and found to comply with the limits for a Class A digital device, pursuant to Part 15 of the FCC rules. These limits are designed to provide against harmful interference when equipment is operated in a commercial environment. This equipment generates, uses and can radiate radio frequency energy and, if not installed and used in accordance with the instruction manual, may cause harmful interference to radio communications. Operation of equipment in a residential area is likely to cause harmful interference, in which case the user will be required to correct the interference at their own expense.

## Product Overview

### DESCRIPTION

The **IN3662** is a dual input / output switcher designed to select between two high-resolution computer video signals and route the selected output to two display devices simultaneously. The **IN3662** is a powerful unit that combines the functionality of three 1 x 2 VGA distribution amplifiers plus a 2 x 1 VGA switcher into a compact, rugged, rack-mountable enclosure.

#### KEY CONCEPT



*The **IN3662** is not a scan converter. The data projector, monitor or other output device must be compatible with the horizontal scan rates output by the computer video cards.*

### PRODUCT FEATURES

**Universal Analog Signal Compatibility** - The **IN3662** features 15-pin inputs and outputs and connects directly to VGA, S-VGA and XGA computer graphics cards and displays using high-resolution coaxial VGA cables. The **IN3662** can also connect to MAC, SUN, SGI and other high-resolution workstations and displays by using the appropriate input and output adapter / extension cables.

**Buffered Local Monitor Outputs** - With a traditional two input switcher, users must employ a 1 x 2 VGA distribution amplifier at each computer to split the signal between the local monitor and the switcher input. The unique design of the **IN3662** provides a buffered local monitor output for each input, letting users connect the local monitor without the need for additional equipment. All sense pins are passed directly from each input to the corresponding local monitor output.

**Front Panel Input Selector** - Users may select the desired input by pressing the front panel selection button. Each time the button is pressed the unit toggles between Input 1 and Input 2. Front panel LEDs illuminate to indicate the currently selected input. The non-selected input is terminated into 75 Ohms.

**Remote Control Capability** - The remote port is a three-pin captive screw terminal on the back panel that allows the **IN3662** to be remotely controlled by any device that is capable of providing a latching contact closure. The remote port also includes a status pin that provides feedback to the control system to indicate the current selected input. RS-232 control devices (when used with an optional **IN6901** / **IN6902** RS-232 to contact closure converter) may also be used to control the switcher.

**Rugged Rack-Mountable Design** - The **IN3662** is housed in a durable metal case that can be mounted in a 1U rack space. Two units may be mounted side-by-side on a single **IN9080** rack shelf (optional), or a single unit may be mounted with the shelf and an optional **IN9088** blank plate.

**Dual Outputs** - Featuring two main outputs, the **IN3662** can drive up to two large screen data displays in addition to the local monitor(s).

**400 MHz Bandwidth** - provides superb performance and maximum image clarity at any resolution.

The **IN3662** also features an internal power supply.

## Compatibility

The **IN3662** switcher features 15-pin HD female input and output connectors. The unit can be connected to MAC, SUN, SGI and 4 or 5 BNC workstations using input / output adapter cables, which are available in a variety of lengths (see list on the following page).

### INPUT

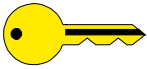
The **IN3662** will accept high-resolution analog video signals from a wide variety of IBM and compatible computer video signal formats including VGA, S-VGA and XGA. The unit will work with signals at virtually any resolution and refresh rate.

### OUTPUT

Featuring dual outputs, the **IN3662** can drive up to two data display devices simultaneously. The output signal is compatible with high-resolution data grade monitors and data / graphics projectors, making it ideal for use with LCD projectors and other data display devices which require that all VGA sync formats and polarities remain unchanged from the original source signal.

The switcher provides a buffered local monitor output for each input, allowing direct connection of up to two local monitors without the need for additional equipment. All sense pins are passed from each input directly to its corresponding local monitor output.

#### KEY CONCEPT



*VGA, MAC, SUN, SGI and other high-resolution workstations operate in several video modes encompassing a wide range of resolutions and scan rates. Many of the video signals from the newest models can run as high as 70 KHz or more, with the newest VGA cards offering an output resolution of 1600 x 1200 (some can even go as high as 1920 x 1080). The data projector or monitor connected to the interface output must be compatible with the horizontal scan rate and vertical refresh rate of the computer's video signal. Please check the documentation for both the computer graphics card and the data display device to ensure compatibility.*

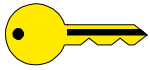
## Installation

This section offers step-by-step instructions for installing the **IN3662** VGA Switcher. An APPLICATION DIAGRAM is provided on page 4.

*Note: Read the instructions carefully before initiating the installation procedure. Make sure that there is no power connected to the **IN3662**, and that the power button is in the off (o) position.*

1. Place / install the **IN3662** at the desired location. Make sure that the switcher is seated on a flat surface or is securely installed in a standard 19" equipment rack using an optional **IN9080** rack shelf. *When attaching any INLINE unit to an INLINE rack mount shelf, the four (4) rubber feet must be removed from the bottom of the unit.* Secure the switcher to the rack mount shelf using two (2) #6 - 32 x 1/4" long screws (provided with the rack shelf). Two **IN3662** switchers may be mounted side-by-side on a single rack shelf, or a single unit may be mounted along with an optional **IN9088** blank plate. Together, the **IN3662** and the **IN9080** fit snugly in a 1U rack space.
2. Connect all VGA sources to the **IN3662** input connectors. An unused input does not need to be terminated.

3. Connect the display device(s) to the output of the **IN3662**.

**KEY CONCEPT**

*Cable selection is critical to overall system performance, especially when dealing with very high scan rates and / or long cable runs. High-resolution VGA extension cables such as the **IN8000 Series** are recommended for all input and output connections.*

4. Connect the local monitor(s). An unused output(s) does not need to be terminated.
5. Apply A/C power to the unit using the **IN9230** IEC power cable (included).
6. Turn on the switcher, the VGA source(s), the output device(s) and the local monitor(s).

## **ADAPTER / EXTENSION CABLES FOR INPUT & LOCAL MONITOR / DISPLAY DEVICE OUTPUT**

Like many other **INLINE** units, the **IN3662** has 15-Pin HD VGA-type connectors. The adapter / extension cables listed below are available to support a variety of computers / local monitors / display devices.

<b>Computer</b>	<b>3'</b>	<b>6'</b>	<b>12'</b>	<b>25'</b>	<b>35' - 250'</b>
<b>VGA: 15-Pin HD</b>					
Input Cable		<b>IN8006-1</b>	<b>IN8012-1</b>	<b>IN8025-1</b>	<b>IN80xx</b>
Output Cable		<b>IN8006-1</b>	<b>IN8012-1</b>	<b>IN8025-1</b>	<b>IN80xx</b>
<b>MAC with 15-Pin D:</b>					
Input Cable		<b>IN9140</b>		<b>IN9144</b>	
Output Cable		<b>IN9141</b>			
<b>MAC G3, G4 and PowerBook with 15-Pin HD*:</b>					
Input Cable		<b>IN8006-1</b>	<b>IN8012-1</b>	<b>IN8025-1</b>	<b>IN80xx</b>
Output Cable		<b>IN8006-1</b>	<b>IN8012-1</b>	<b>IN8025-1</b>	<b>IN80xx</b>
<b>SUN: 13W3 (may also be used with SGI with RGB output)</b>					
Input Cable		<b>IN9142</b>		<b>IN9146</b>	
Output Cable	<b>IN9143</b>				
<b>Workstation: 5 BNC / RGBHV</b>					
Input Cable		<b>IN9046-L6</b>	<b>IN9046-L12</b>	<b>IN9046-L25</b>	
Output Cable		<b>IN9045-L6</b>	<b>IN9045-L12</b>	<b>IN9045-L25</b>	<b>IN9045-Lxx</b>
<b>Workstation: 4 BNC - RGBS</b>					
Input Cable		<b>IN9100</b>			

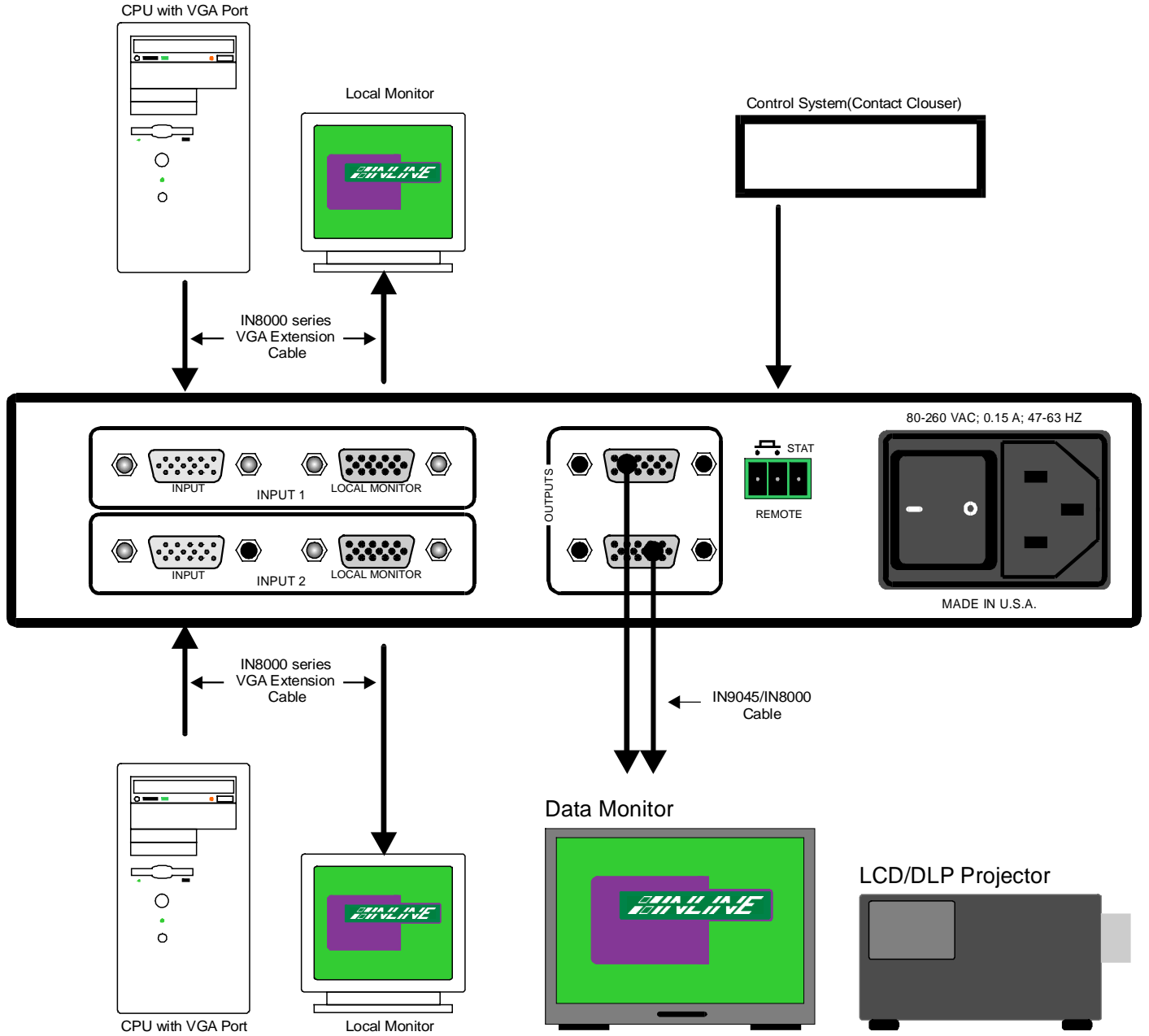
**KEY CONCEPT**

*\* Newer MAC G3 models (with translucent cases) have 15-Pin HD connectors (pins arranged in 3 rows). Older G3 models (with solid white enclosures) incorporate 15-Pin D connectors (pins arranged in 2 rows).*

The cables listed above can also be used with any of the following **INLINE** units:

<b>IN2100</b>	<b>IN2111 Series</b>	<b>IN2112 Series</b>	<b>IN2114 Series</b>	<b>IN2116</b>	<b>IN2200</b>
<b>IN3262 Series</b>	<b>IN3264</b>	<b>IN3268</b>	<b>IN3562R</b>	<b>IN3662</b>	<b>IN3666</b>

# IN3662 APPLICATION DIAGRAM



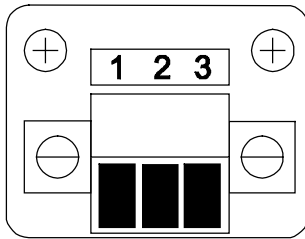
## Operation

### INPUT SELECTION

The **IN3662** switcher provides a front panel button for selecting the desired input channel. Each time the **SELECT** button is pressed the unit toggles back and forth between Input 1 and Input 2 and the appropriate front panel LED indicator illuminates to show the current channel selection. The non-selected channel is terminated into 75 Ohms. The switcher automatically returns to the last selected channel if power is removed and reapplied to the unit. Input channels may also be selected remotely by using a wired remote or a third-party control.

### REMOTE CONTROL OPERATION

The **IN3662** has a REMOTE port, a 3-pin captive screw connector that allows the unit to be remotely controlled and provides feedback to indicate which input is currently selected. Input 1



or Input 2 can be selected through the remote port by providing a latching contact closure between pin 1 and pin 2 on the remote jack. Opening or closing the contact closure on the remote jack causes the unit to select the opposite input. The front

panel switch and the contact closure switch work independently. Therefore, an open or closed status between pins 1 & 2 on the remote port could select either Input 1 or Input 2, depending on the current position of the front panel switch as indicated in the chart below.

<u>PIN</u>	<u>FUNCTION</u>
1	Input Select
2	Ground
3	Status

	<b>Pin 1 &amp; Pin 2 - No Connection</b>	<b>Pin 1 Grounded to Pin 2</b>
<b>Front Panel Button - Out</b>	Input 1 Selected	Input 2 Selected
<b>Front Panel Button - Depressed</b>	Input 2 Selected	Input 1 Selected

The remote connector status pin can be used to provide feedback to a control system to indicate whether Input 1 or Input 2 is currently selected. The status pin will be high or low depending on the current input:

**Pin 3 High (5V)** - Input 1 is currently selected

**Pin 3 Low (0V)** - Input 2 is currently selected

## CONTACT CLOSURE DEVICES

Any device capable of providing a latching contact closure may be used to control the **IN3662**. Several contact closure type devices are available:

**IN6901 / IN6902 RS-232 to Contact Closure Converter** - allows the **IN3662** switcher and other **INLINE** devices with contact closure control ports to be regulated by RS-232 sources.

**Control System** - many control systems are capable of providing contact closures.

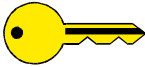
**Remote Control Panel** - several custom remote panels are available, or a remote switch may be fabricated by the installer.

## DISABLE FRONT PANEL INPUT SELECTOR

The front panel input selector can be disabled for applications where the switcher will only be controlled through the remote port. To enable / disable the front panel input selector (see **IN3662** INTERNAL JUMPER DIAGRAM on the following page), set Jumper 6 as follows:

**J6 Open:** Front Panel Input Selector Enabled (factory default)  
**J6 Closed:** Front Panel Input Selector Disabled

### KEY CONCEPT



*Warning: Jumpers should only be adjusted by qualified technicians! An improper setting may lead to incorrect operation and could even result in severe damage to the computer video port or the monitor.*

When the front panel selector is disabled, the remote port always functions in the following manner (it makes no difference how the front panel selector is set):

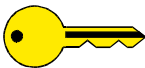
**Pins 1 and 2 open:** Input 1 Selected  
**Pin 1 grounded to Pin 2:** Input 2 Selected

## MAC G3 & G4 ADJUSTMENTS

For applications involving newer MAC G3 and G4 models (with translucent cases), it may be necessary to ground pin 11 (the ID bit) on the 15-pin HD connector (see diagram on the following page). To ground / unterminate pin 11, set Jumper 9 is as follows:

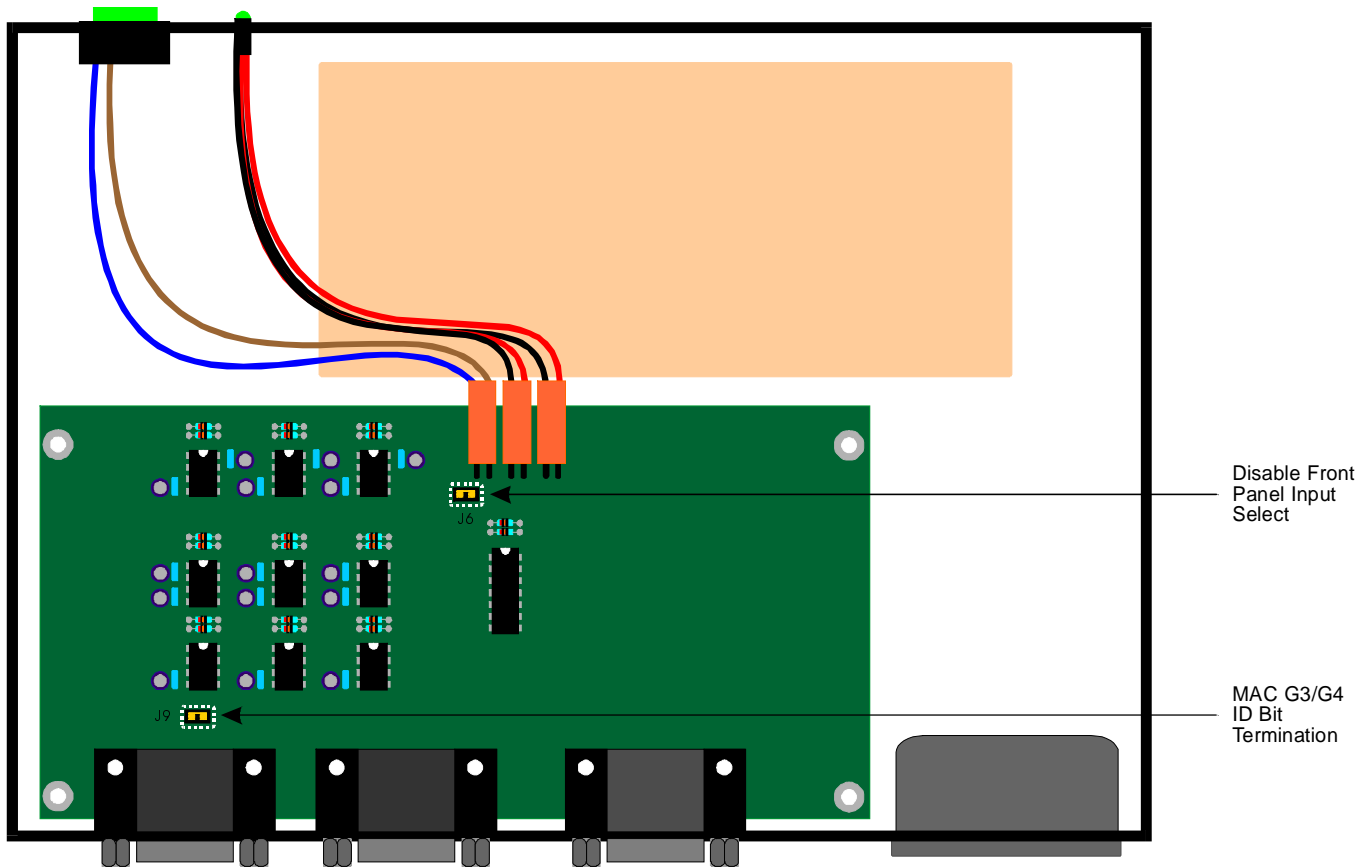
**J9 Open:** Pin 11 unterminated (factory default)  
**J9 Closed:** Pin 11 grounded.

### KEY CONCEPT



*Internal control adjustments require the **IN3662** case to be opened (see instructions on page 7), making the interface's sensitive electronic components vulnerable to physical impairment or damage from static discharge. Only qualified technicians, in an approved field force protective workstation, should carry out the case opening procedure. Physical damage to internal components and damage caused by static discharge is not covered under warranty.*

## IN3662 INTERNAL JUMPER DIAGRAM



## OPENING THE IN3662 CASE

*Note: The case opening procedure should only be done by a qualified technician in a static-free environment. Failure to follow proper procedures could result in damage to the unit or electric shock.*

To remove:

1. Unplug the **IN3662** from the A/C power source and place the unit in a static free environment to ensure protection to the internal components.
2. Using a small Phillips screwdriver, loosen and remove the four case screws on the sides of the unit.
3. Gently slide the top cover away from the lower housing.

To replace:

1. Replace the top of the case, carefully aligning the upper and lower screw holes.
2. Replace the four Phillips head case screws.

## Specifications

<b>IN3662 VGA Switcher</b>	
<b>Input</b>	
Connectors	(2) 15-Pin HD Male
Compatible Signals	Video: 0.7 Vp-p Nominal, 1.5 Vp-p max. Sync: TTL, 5 Vp-p max Non-selected channel is terminated into 75 Ohms
<b>Output</b>	
Local Monitor Outputs	(2) 15-Pin HD Female
Main Outputs	(2) 15-Pin HD Female
<b>General</b>	
Bandwidth	400 MHz @ -3dB with 0.7 Vp-p input signal
Switching Time	2.5 mSec typical
Remote Port	3-Pin Phoenix Brand Connector
Power Supply	Internal Switch Mode: 90-260 VAC; 47-63 Hz
Power Consumption	10 Watts
Shipping Weight	4.0 lbs. / 1.8 Kg
Product Weight	2.0 lbs. / 0.9 Kg
Dimensions	1.65" x 6.8" x 4.8" / 4.2 cm x 17.3 cm x 12.2 cm
Regulatory Approvals	UL 1950, CAN / CSA-22.2 No. 950, 3 <sup>rd</sup> Edition CE: EN55022 (1987), EN50081-1 (1991) EN50082-1 (1992 and 1994), EN60950-92

<b>Parts Included</b>
<b>IN3662</b> - VGA Switcher <b>IN9320</b> - IEC Power Cable, 6' long (USA only) Operation Manual

<b>Optional Accessories</b>
<b>VGA Cables</b>
<b>IN8000 Series</b> High-Resolution VGA Cables with 15-Pin HD Connectors (available in a variety of lengths) Adapter / Extension Cables are listed on page 3
<b>Powered Accessories</b>
<b>IN1110 / IN1111</b> - Video Transmitter / Receiver System
<b>Rack-Mounting Hardware</b>
<b>IN9080</b> - Rack Shelf <b>IN9088</b> - Blank Plate
<b>Remote Accessories</b>
<b>IN6901 / IN6902</b> - RS-232 to contact closure converter <b>IN9465</b> - Rocker Switch Module

## Troubleshooting

**Problem:** The display device connected to the switcher has a bad / scrambled image.

**Solution 1:** Verify that the correct input cable is being used (see list on page 3).

**Solution 2:** The display device connected to the output of the switcher may not be compatible with the computer's video output. Standard 640 x 480 VGA runs at 31.5 KHz. PC, MAC, SUN and other high-resolution workstations have new and ultra high-resolution modes such as 1600 x 1200 and 1800 x 1440, and can output a video signal with a horizontal scan rate of over 100 KHz! Many data monitors and data projectors are not compatible with these resolutions and frequencies. Check the operation manual on both the computer graphics card and the display device to ensure compatibility.

**Problem:** The IN3662 is plugged in but the LED display on the front panel is dark.

**Solution 1:** Make sure that the **IN9230** IEC power cable is securely plugged into the unit and the A/C source.

**Solution 2:** Make sure the A/C source is live.

**Problem:** When hooking up a MAC computer to the IN3662, the display device has a bad / scrambled image.

**Solution:** For applications involving newer MAC G3 and G4 models (with translucent cases), it may be necessary to ground pin 11 (the ID bit) on the 15-pin HD connector. Refer to the MAC G3 & G4 ADJUSTMENTS section on page 6 and the **IN3662** INTERNAL JUMPER DIAGRAM on page 7.

If problems persist, call **INLINE** Technical Services at (714) 921-4100 for further assistance.

## Warranty

- INLINE warrants the equipment it manufactures to be free from defects in materials and workmanship.
- If equipment fails because of such defects and INLINE is notified within two (2) years from the date of shipment, INLINE will, at its option, repair or replace the equipment at its plant, provided that the equipment has not been subjected to mechanical, electrical, or other abuse or modifications.
- Equipment that fails under conditions other than those covered will be repaired at the current price of parts and labor in effect at the time of repair. Such repairs are warranted for ninety (90) days from the day of re-shipment to the Buyer.
- **This warranty is in lieu of all other warranties expressed or implied, including without limitation, any implied warranty or merchantability or fitness for any particular purpose, all of which are expressly disclaimed.**

The information in this manual has been carefully checked and is believed to be accurate. However, INLINE, Inc. assumes no responsibility for any inaccuracies that may be contained in this manual. In no event will INLINE, Inc. be liable for direct, indirect, special, incidental, or consequential damages resulting from any defect or omission in this manual, even if advised of the possibility of such damages. The technical information contained herein regarding **IN3662** features and specifications is subject to change without notice.

© Copyright 2000 INLINE, Inc. All Rights Reserved.

**INLINE, Inc. ♦ 22860 SAVI RANCH PARKWAY ♦ YORBA LINDA, CA 92887**

**800-882-7117 ♦ 714-921-4100 ♦ Fax 714-921-4160 ♦ [www.inlineinc.com](http://www.inlineinc.com)**