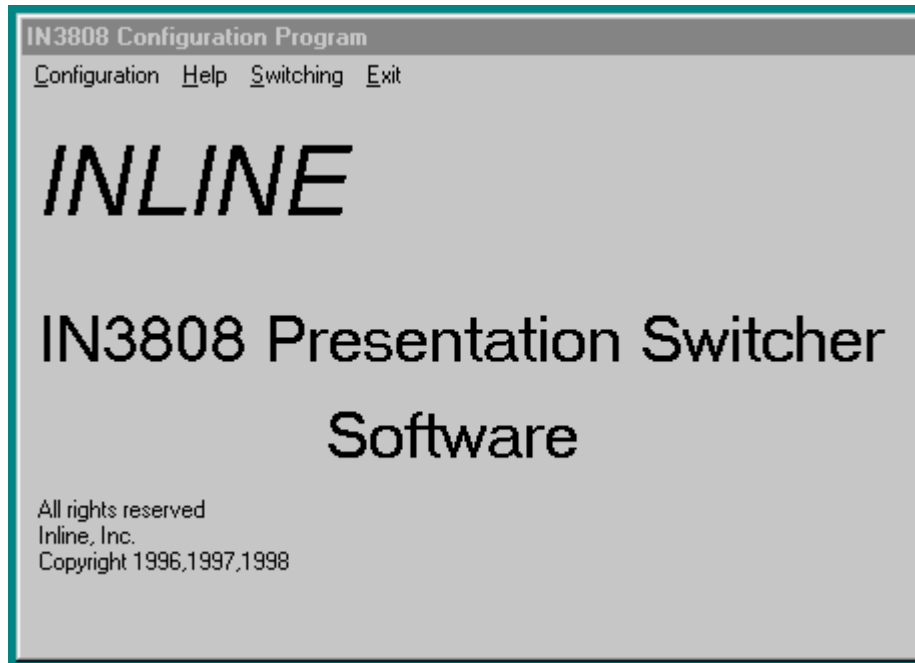


# SOFTWARE MANUAL



## IN3808 Presentation Switcher Configuration Software V5.1.4



## INSTALLATION

### NT 3.5.X

1. Insert Disk # 1 into 3.5" floppy drive.
2. Click on the File menu in the Windows Program Manager (desktop).
3. Click on Run and type A:\Setup and click OK. (A: refers to the drive letter of your 3.5" drive)
4. Follow the on screen prompts for disks 2 & 3.

### Windows 95, 98 & NT 4.0

1. Insert Disk # 1 into 3.5" floppy drive.
2. Click on the START button and then click on the RUN option.
3. Type A:\Setup and click OK. (A: refers to the drive letter of your 3.5" drive.
4. Follow the on screen prompts for disks 2 & 3

## OVERVIEW OF SOFTWARE FEATURES

The **IN3808** Configuration Software is designed to let the user take full advantage on the RS-232 options of the **IN3808** Presentation Switcher. Some of the Features include:

### Com Port Configuration:

This function lets the user easily select the RS-232 Baud Rate settings which the **IN3808** will use in being controlled by a computer or other third party control device.

### I/O Configuration

The powerful Direct Mode switching requires that the user define which inputs will be switched to outputs 1-4. The I/O Configuration allows the user to define the input to output(s) configuration of the **IN3808** Presentation Switcher in **three user modes**: 1) Matrix Mode, 2) Breakaway Audio Mode and 3) Direct Mode. Simply click an input and then click the outputs that will activate that output.

The I/O Configuration can then be saved to a database allowing up to 10 configurations to be saved and loaded.

### Program Projector Codes

Each button on the **IN3808** can be programmed to output codes to control projectors or other serially controlled audiovisual devices. When the button is pressed the corresponding code will be sent out to the projector. An unlimited number of Projector Control Code files (PCC) can be saved to the hard disk allowing for multiple configurations to be programmed ahead of time.

The **IN3808** Software allows the user to input the codes into the **IN3808** Switcher. The projector code configuration can then be written to a file and retrieved later.

### Remote Matrix Switching

Remote Matrix Switching is done through one of three switching panels that are selected as described below. These switching panels are: **Direct Mode**, **Matrix Mode** and **Matrix Breakaway Audio Mode**.

### Rename Output and Input Select Buttons

The Output and Input buttons can be renamed to describe the video source. Clicking the right mouse button will bring up a text box in which the new name can be entered. Press Ok and the name will appear as the new button name.

## USING THE IN3808 CONFIGURATION SOFTWARE

The following is the recommended procedure to use the **IN3808** Configuration Software to properly program your **IN3808** Presentation Switcher:

### **Reset to Factory Default:**

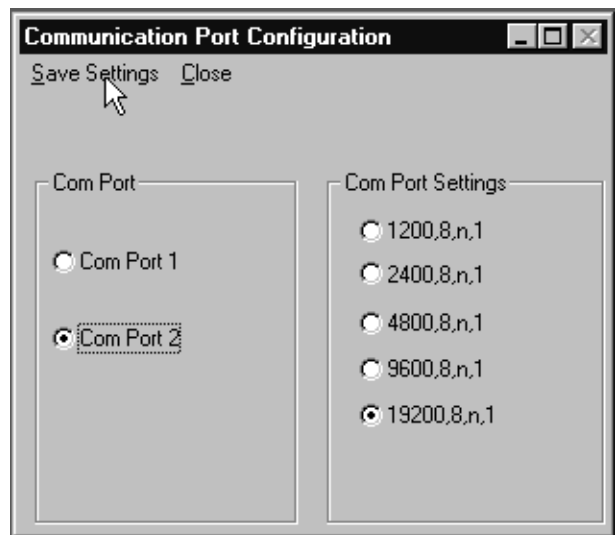
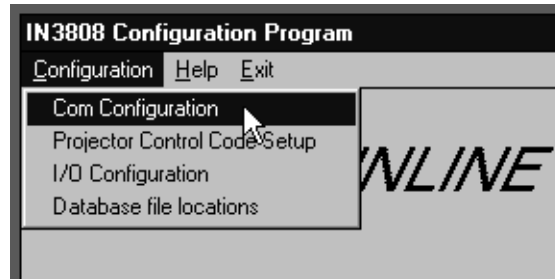
If the **IN3808** is brand new and this is the first time you are using it, you can skip this step as the unit is set to the Factory default before shipping from the factory. Resetting the unit to factory default puts the **IN3808** into a known state to ensure the **IN3808** Configuration Software will operate correctly.

*To reset the unit to factory defaults:* Turn off the power switch, press and hold the F1 button, turn on the power switch while continuing to hold the F1 button. The unit is now set to factory defaults.

### **Configuring Com Port and Baud Rate:**

In controlling the **IN3808** from a PC or a third party control device, the RS-232 baud rate of the two devices must be the same. Version 3.0 automatically polls the **IN3808** for the baud rate at power up. This software also allows you to set the baud rate of the **IN3808**, and additionally sets the baud rate of your PC to that baud rate so that it can communicate with the **IN3808** to configure other parameters:

1. From the Title Screen select the **Configuration** Menu.
2. Select the **COM Configuration** option. This will open the Communication Port Configuration Window.
3. Select the COM Port that the **IN3808** is attached to on your computer. COM 1 is usually a Female 9 Pin and COM two is usually a Male 25 Pin.
4. Select the Baud Rate, which will be used to control the **IN3808**.
5. Select **Save Settings** at the top of the window. This will send the appropriate code to the **IN3808** to set its baud rate and will set your PC to that baud rate.
6. Select **Close** at the top of the Communication Port Configuration Menu.

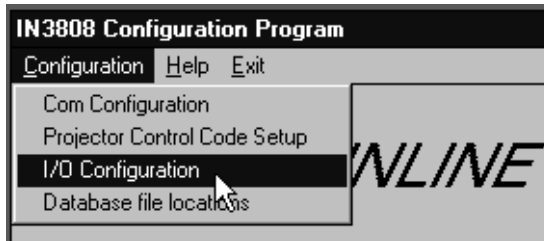


### Configuring Direct Mode I/O Configuration:

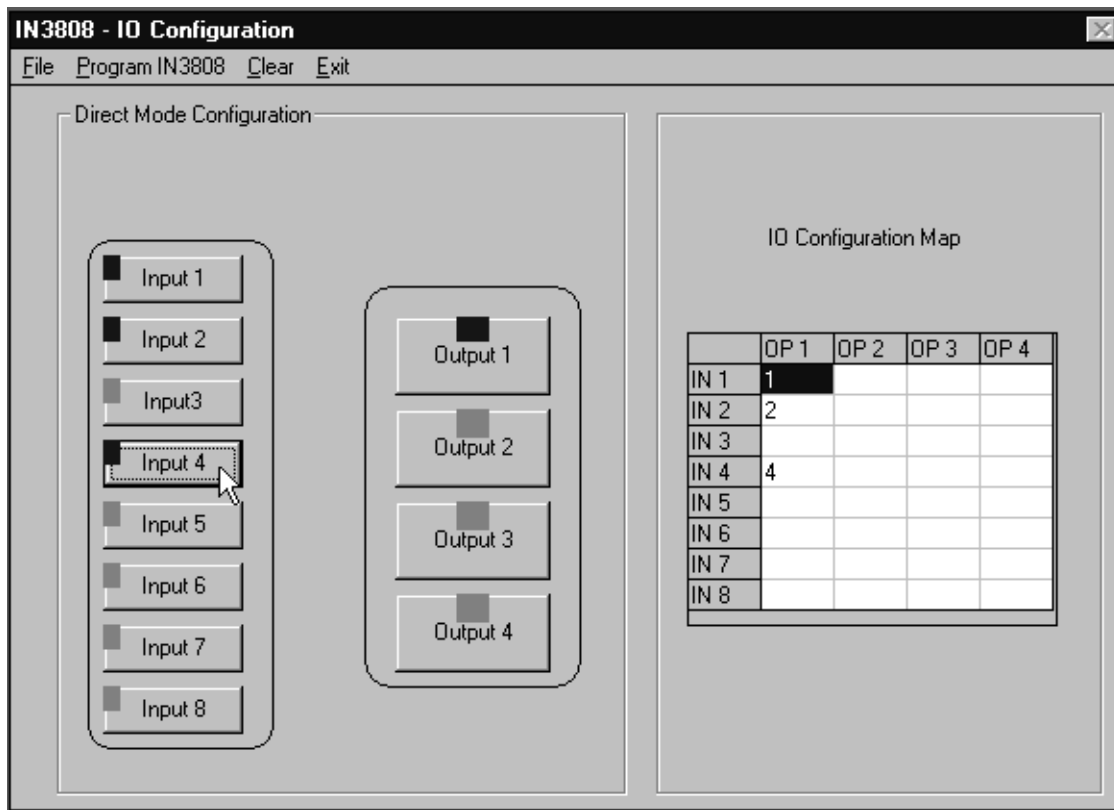
If you are going to use the **IN3808** in the Matrix mode, you can skip this section.

In the Direct Mode, each input is pre-assigned to an output or outputs and is automatically sent to the output(s) when selected. All other outputs are disconnected (only one input can be active at a time.) The software allows you to assign the inputs to outputs as follows:

1. From the IN3808 Configuration Software title screen select the **I/O Configuration** under the **Configuration** Menu. This will open the **IN3808 - IO Configuration Window**.



2. Click one of the Output buttons. The “LED” turns blue to identify the selected output.
3. Click the buttons on the Input(s) to be assigned to the selected Output. The “LEDs” of the selected input(s) turn blue to indicate they are selected. In addition, the IO Configuration Map shows the input(s) assigned to each output. To de-select an input, simply click the button again.
4. Repeat steps 2 & 4 for all outputs. Select **Clear** to clear all of your IO settings and start over.
5. When done, select **Program IN3808** to set the **IN3808** into the Direct Mode and program the I/O Configuration.
6. Select Exit from the menu to quit the Direct Mode I/O Configuration.



**Saving an I/O Configuration to a File:**

You can save the IO configuration you have just programmed to a file as follows:

1. Select **S**ave **C**onfiguration under the **F**ile Menu
2. Enter a name for the configuration file.
3. Click the **S**ave Button

**Loading an I/O Configuration File:**

You can load a previously saved IO configuration as follows:

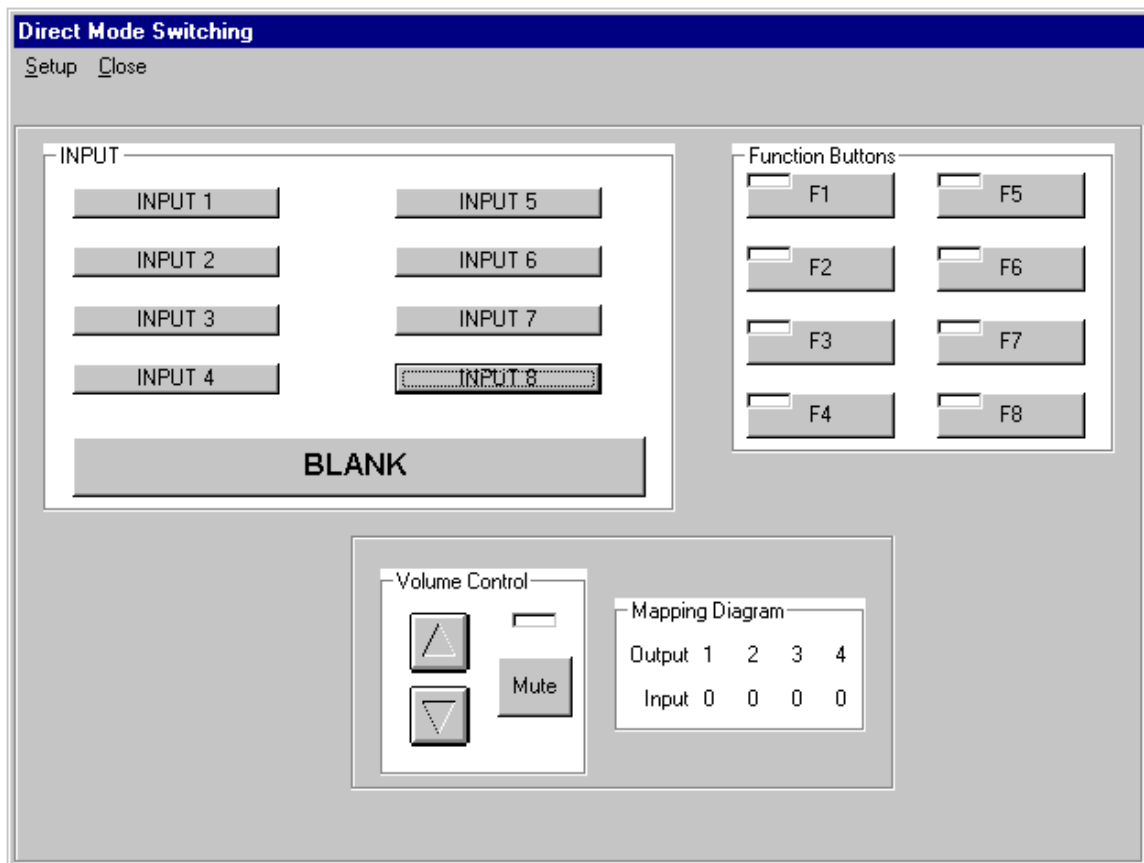
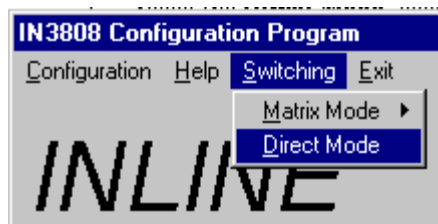
1. Select **L**oad **C**onfiguration from **D**isk under the **F**ile Menu
2. Type the name of the desired file name or select it from the list.
3. Click the **L**oad Button
4. If you would like to program the IN3808 with the new file now, click **Y**es at the prompt. If not, click **N**o.

## Remote Switching

**Remote Switching while in Direct Mode:**

Enter the **Direct Mode Switching** menu by:

1. Select **S**witching from the **I**N3808 **C**onfiguration **P**rogram menu.
2. Select the **D**irect **M**ode selection to enter the **D**irect **M**ode **S**witching menu.

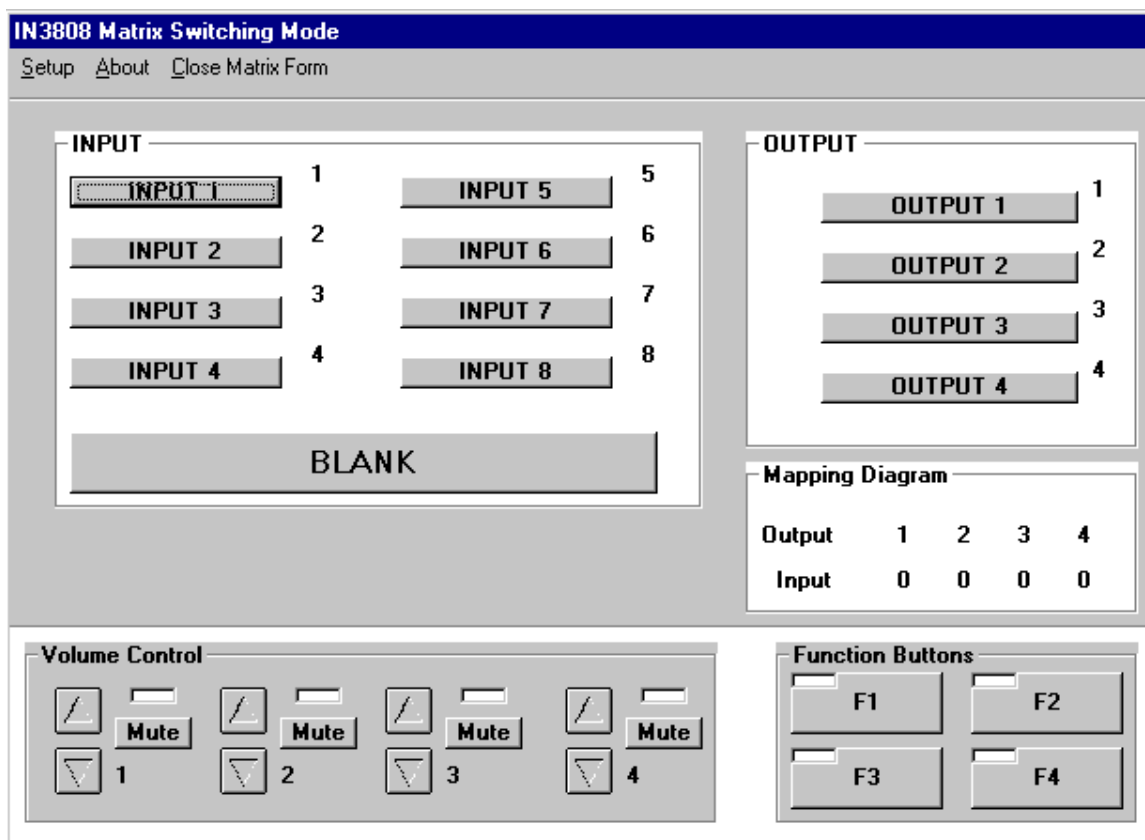
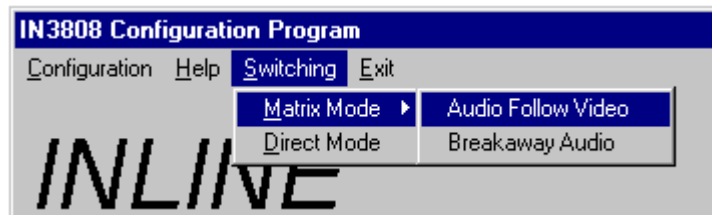


3. Make an output connection path by clicking the desired input. The Mapping Diagram will take a few seconds to update while polling the IN3808.

**Remote Switching while in Matrix Mode:**

Enter the **Matrix Mode Switching** menu by:

1. Select **Switching** from the **IN3808 Configuration Program** menu.
2. Select **Matrix Mode: Audio Follow Video** to enter the **Matrix Switching Mode** menu.

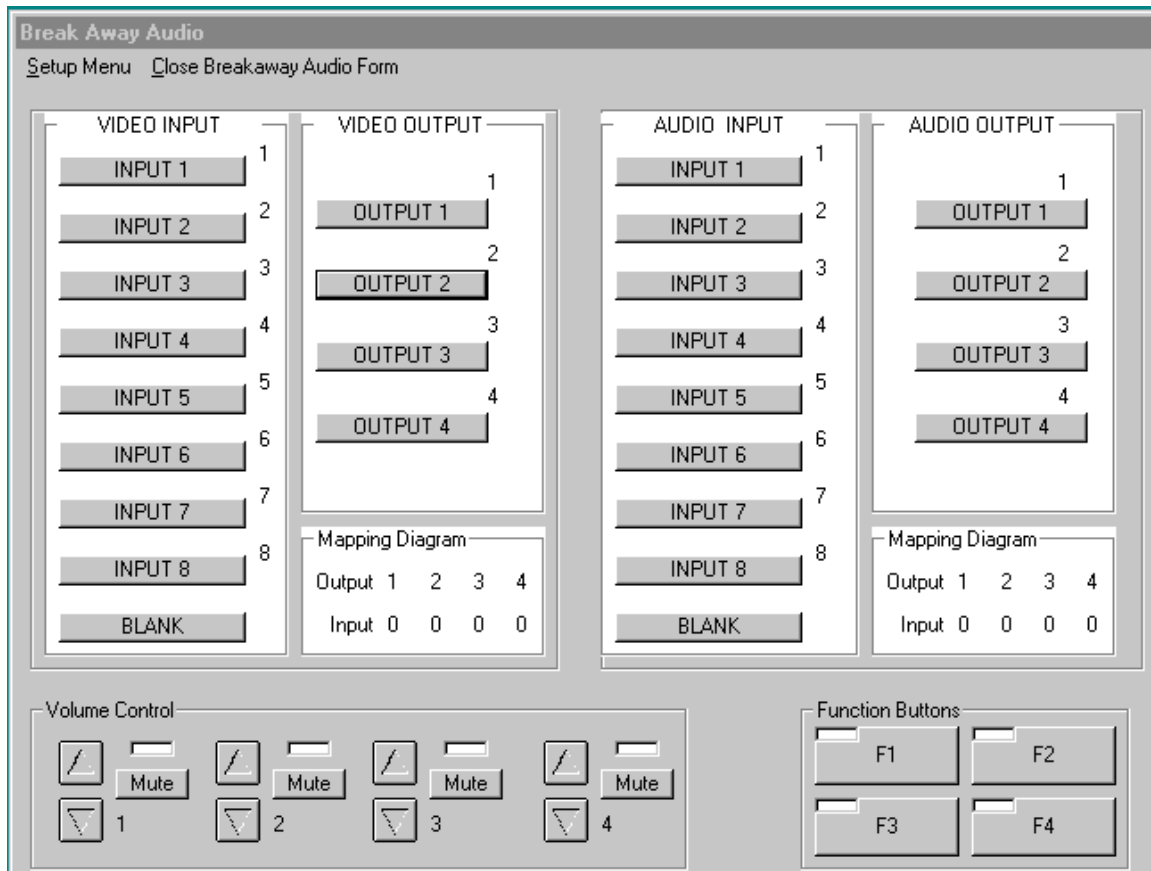
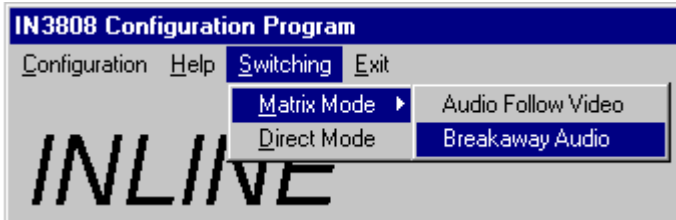


3. Make an output connection path by clicking the desired input and then clicking the desired output. The Mapping Diagram will take a few seconds to update while polling the IN3808.
4. The audio associated with the selected input will be automatically routed to the selected output.

### Remote Switching while in Breakaway Matrix Mode:

Enter the **Matrix Mode Switching** menu by:

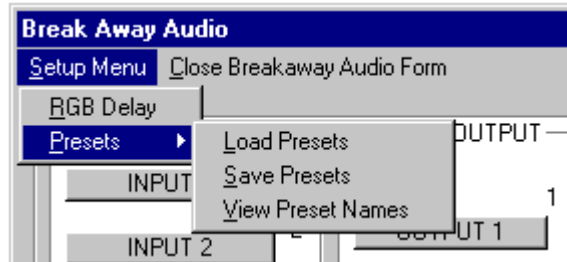
1. Select **Switching** from the **IN3808 Configuration Program** menu.
2. Select **Matrix Mode: Breakaway Audio** to enter the **Breakaway Audio Mode** menu.



3. Make an output connection path for video by clicking the desired input and then clicking the desired output. The Mapping Diagram will take a few seconds to update while polling the **IN3808**.
4. The audio path is selected as a separate connection path from the video. Use the same procedure above to make audio connection path.

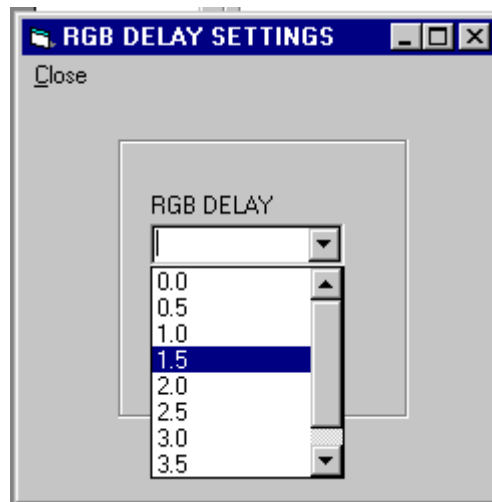
### **Breakaway Audio Presets**

Saving and loading system configurations is easy to accomplish. To configure the **IN3808** for the video and audio connection paths desired, select the **Setup Menu** and click on **Presets**. A menu will appear with three selections, click the appropriate one and follow the easy visual instructions.



### **RGB Delay Settings**

The RGB Delay settings determine the amount of time that the video sync signal will precede the video signal. The Sync signal is connected first and then the video signal is sent after the selected amount of delay has elapsed. This is done to avoid any flicker or abrupt jump in the video signal as the connection path is switched. From the above menu click on **RGB Delay**. The following menu will appear.



Any selection of delay from 0.0 to 4.0 can be chosen simply by clicking on the appropriate choice. The **Default setting** is 4.0 seconds.

## PROGRAMMING IN3808 WITH PROJECTOR CODES

The external communication port can be used to control a piece of equipment via RS-232, or RS-485. The serial format, baud rate, etc. can be set with the software, as well as whether the code to be sent is ASCII or HEX (Hexadecimal). When the **IN3808** performs certain actions, a code is transmitted out the communication port. Codes are sent as follows:

### Matrix Mode:

#### **Input and Output Codes:**

Each input and output button can store a code. These codes are sent out whenever a switch is made. If just the input is changed (the output does not change) only the input code is sent. However, if the output and input change, the output code is sent first, followed by the input code.

#### **Function Buttons:**

Function Buttons F1, F2, F3 and F4 each hold two codes. One code is sent when the button is activated (the LED turns on) and the other is sent when it is deactivated (the LED turns off).

#### **Recall Codes:**

When you recall a memory, a code is sent. Codes can be stored for memories 1 thru 9.

### Direct Mode:

#### **Input and Output Codes:**

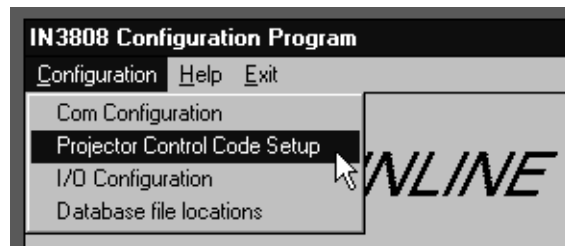
Each input and output can store a code. These codes are sent out whenever a switch is made. The input code is always sent, and the output code is sent whenever a different output is activated.

#### **Function Buttons:**

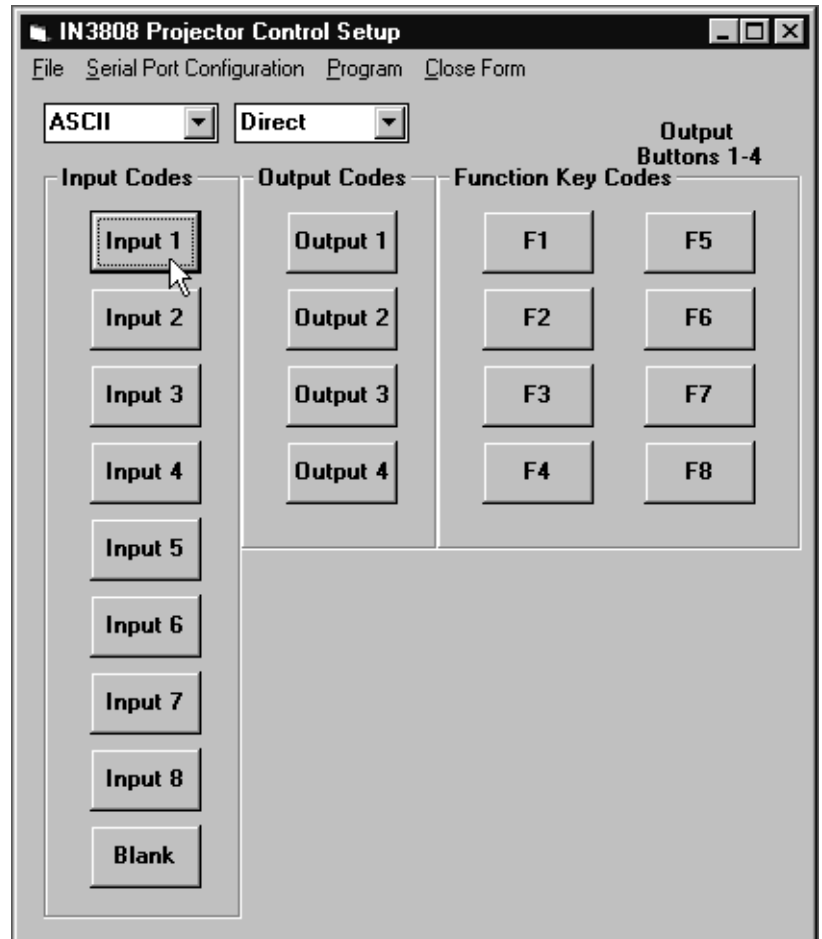
Function Buttons F1, F2, F3 and F4 each hold two codes. One code is sent when the button is activated (the LED turns on) and the other is sent when it is deactivated. In addition, since Output buttons 1 thru 4 are not needed for switching functions in the Direct mode, these buttons now operate as Function buttons F5, F6, F7 and F8. Each of these function buttons can also store two codes.

### Procedure:

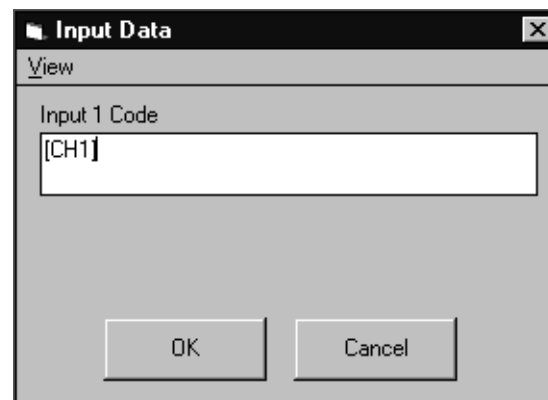
1. From the Title Screen select the **Projector Control Code Setup** option under the **Configuration** Menu.

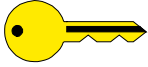


2. Select **ASCII** or **HEX** from the drop down list to determine what type of code you are entering.
3. Select **Direct** or **Matrix** from the drop down list to determine the mode of operation you are using the **IN3808** in.
4. Click on the button where you would like to store code.

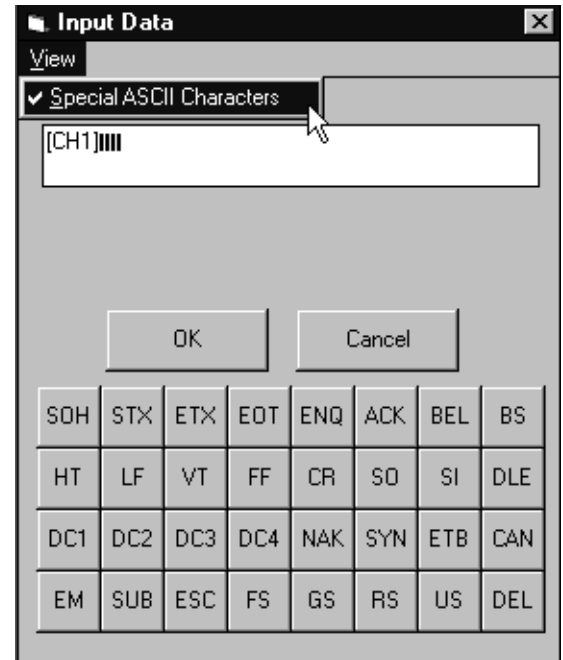


5. The Input Data form will appear indicating the code to be stored. Enter the code and click **OK**.
6. Repeat steps 5 & 6 for all buttons which will send code. All buttons with no code entered will not send out any code.
7. Select **Program IN3808** under the **Program** menu to program the code into the **IN3808**.
8. Select **Close Form** to exit the Projector Control Code Setup.



**KEY CONCEPT**

Some ASCII characters cannot be entered with the keys on your computer keyboard. Some examples are Line Feed and Acknowledge (Hexadecimal numbers 0A and 06.) To enter these characters when entering ASCII codes, select **Special ASCII Characters** under the **View** menu on the Input Data Form as shown in the screen on the right. The codes have no representation other than a line/block.

**Saving Projector Codes to a File:**

You can save the Projector code you have just entered to a file as follows:

1. Select **Save Configuration** under the **File** menu.
2. Enter a name for the file (Must end in .pcc) or select it from the list.
3. Click the **OK** Button

**Loading Projector Codes from a File:**

You can load previously saved Projector Codes as follows:

1. Select **Load Configuration** under the **File** menu.
2. Enter the name of the desired file or select it from the list.
3. Click the **OK** Button.

**Note:** This procedure only loads the information into the software. You must still program the **IN3808** switcher with the **Program** menu.

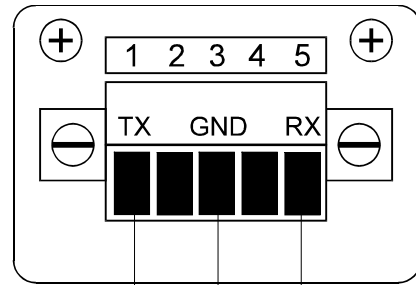
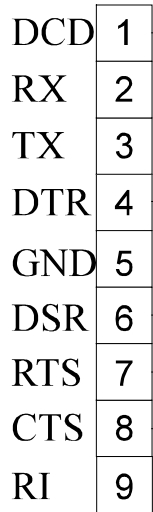
<b>SETTING PROJECTOR PORT PARAMETERS</b>
--

The **IN3808** has a serial port designed to communicate with external devices (such as projectors) via RS-232 or RS-485. The parity and baud rate are also selectable and can be configured as follows:

1. From the Title Screen select the **Projector Control Code Setup** option under the **Configuration** Menu.
2. Select **Configure IN3808 Projector Port** under the **Serial Port Configuration** Menu.
3. Select Baud Rate, Parity and Interface type.
4. Click **Send to Switcher** to send the code to the IN3808 and set the Projector Port's parameters.
5. Click **Close Form** to exit this setup.

**SERIAL PORT PIN CONFIGURATIONS**

9 Pin PC Serial Port



25 Pin PC Serial Port

